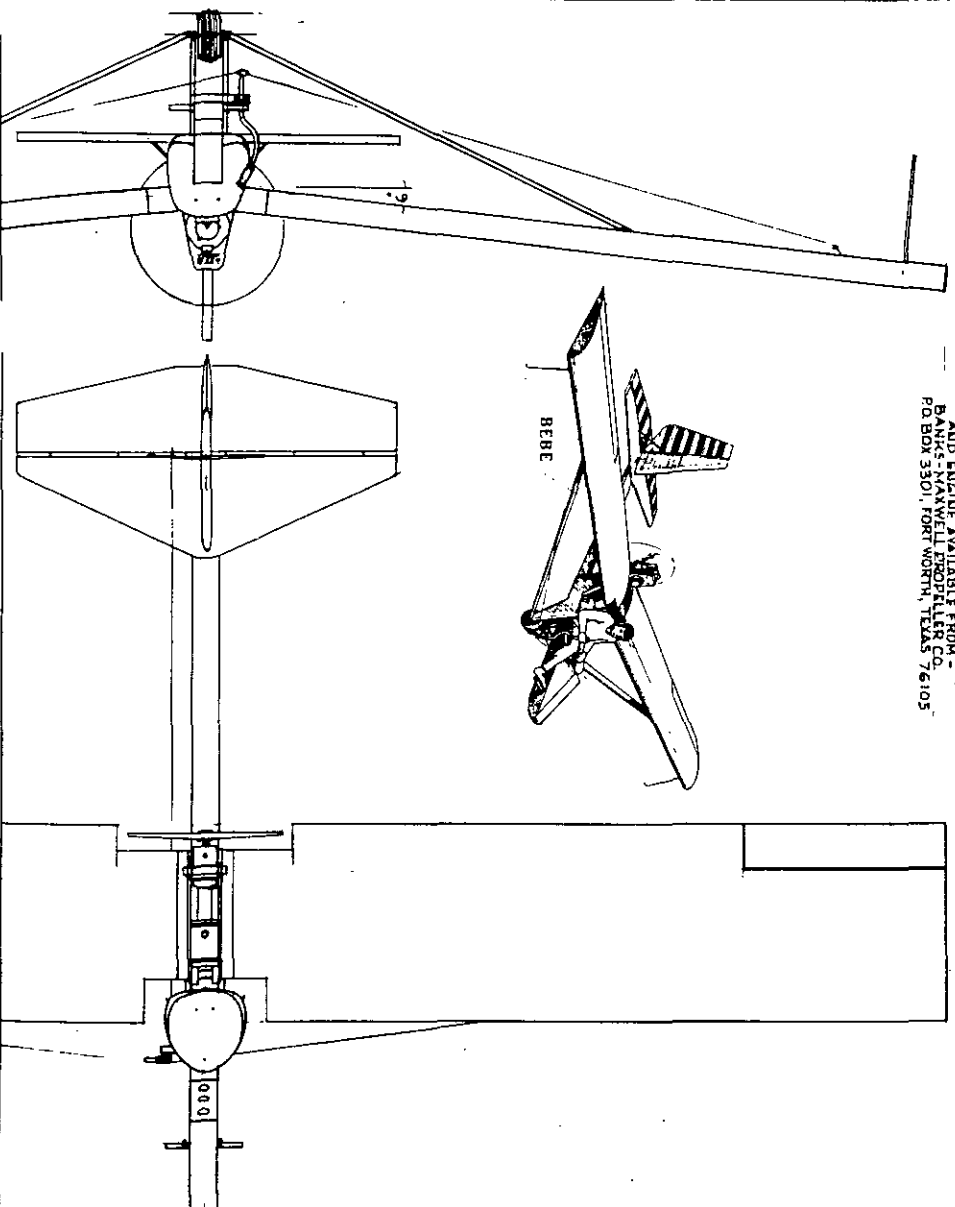
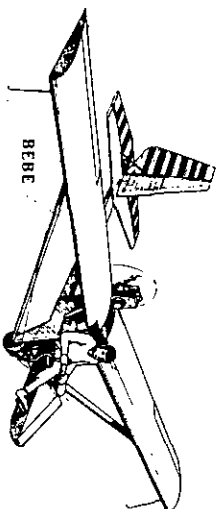


NOTE: PROPELLER, WING MOUNTING BRACE,
AND ENGINE AVAILABLE FROM
BANKS-MANWELL PROPELLER CO.
P.O. BOX 3301, FORT WORTH, TEXAS 76105



SPECIFICATIONS

- SPAN — 29'- $\frac{1}{2}$ "
- CHORD — 46"
- ASPECT RATIO — 7.6-1

- WING AREA — 107.50 SQ. FT.
- AIRFOIL - UPPER SURFACE MODIFIED FX72-MS-150A
- DESIGN LOAD FACTORS: 4:4 G'S. ULTIMATE 11:7 G'S.

WITH ROCKWELL J10, MODEL L-230
ENGINE, SINGLE CYL, 2 CYCLE, WT: 29 LBS.
15.5 HP @ 6000 RPM, 11.5 HP @ 4500 RPM.
PROP: 36" DIA., 16" PITCH

WITH ROCKWELL J10, MODEL L-395
ENGINE, SINGLE CYL, 2 CYCLE, WT: 59 LBS.
24.5 HP @ 5500 RPM, 22.0 HP @ 4500 RPM.
PROP: 36" DIA., 20" PITCH.

EMPTY WT — 170 LBS. | PILOT WT — 180 LBS.
FUEL — 9 LBS. | GROSS WT — 359 LBS.
WING LOADING — 3.35 LBS./SQ. FT.
SPAN LOADING — 12.4 LBS.
POWER LOADING — 23.2 LBS./HP

EMPTY WT — 200 LBS. | PILOT WT — 180 LBS.
FUEL — 18 LBS. | GROSS WT — 398 LBS.
WING LOADING — 3.71 LBS./SQ. FT.
SPAN LOADING — 13.7 LBS.
POWER LOADING — 16.2 LBS./HP

PERFORMANCE (CALCULATED)

TOP SPEED — 65 MPH
CRUISE — 55 MPH
RATE OF CLIMB — 300 FT./MIN.
STALL — 26 MPH
LANDING SPEED — 23 MPH
FLIGHT DURATION — 1 HOUR, 20 MIN.
(CRUISE)

PERFORMANCE (CALCULATED)

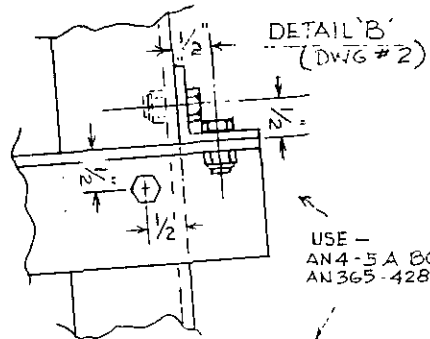
TOP SPEED — 80 MPH
CRUISE — 65 MPH
RATE OF CLIMB — 600 FT./MIN.
STALL — 28 MPH
LANDING SPEED — 25 MPH
FLIGHT DURATION — 3 HOURS
(CRUISE)

SCALE
 $\frac{1}{2}$ " = FT

BEBE 3-VIEW & SPECIFICATIONS

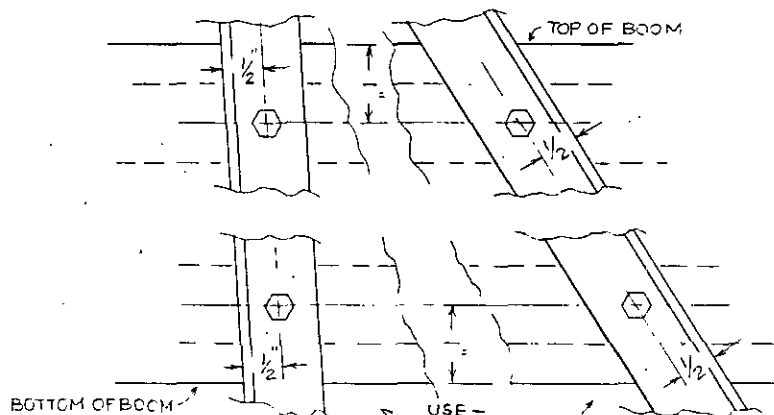
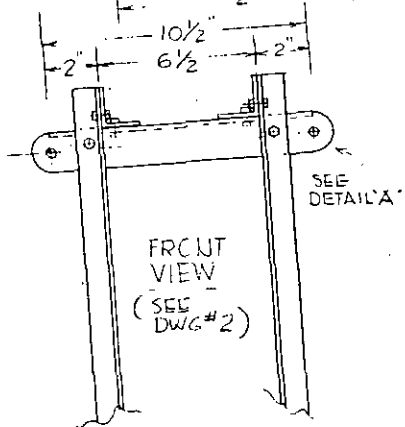
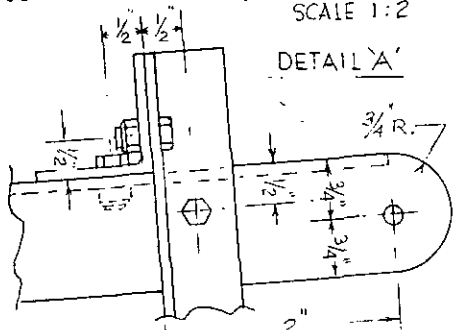
DRAWN BY
H. BEAUJON

DRAWING NO
1



USE -
AN4-5A BOLTS
AN365-428 NUTS

SCALE 1:2

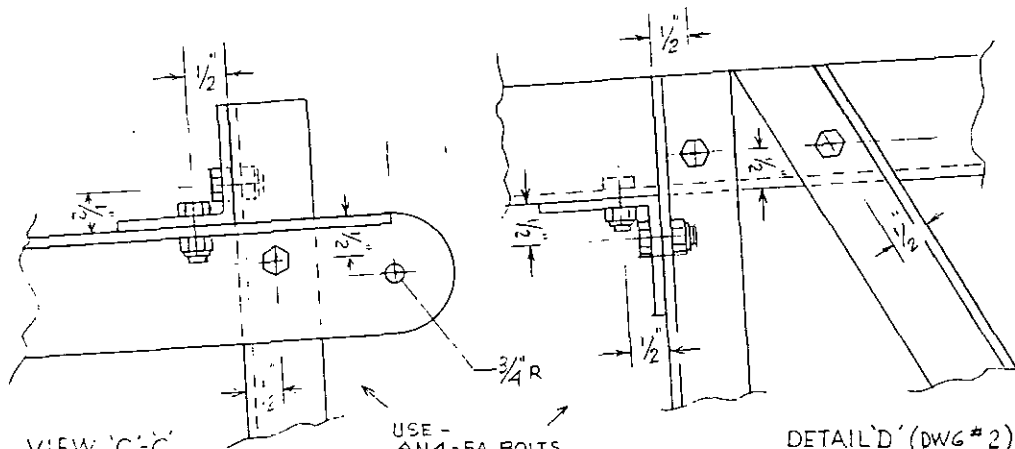


USE -
AN4-7A BOLTS
AN 365-428 NUTS

SCALE 1:2

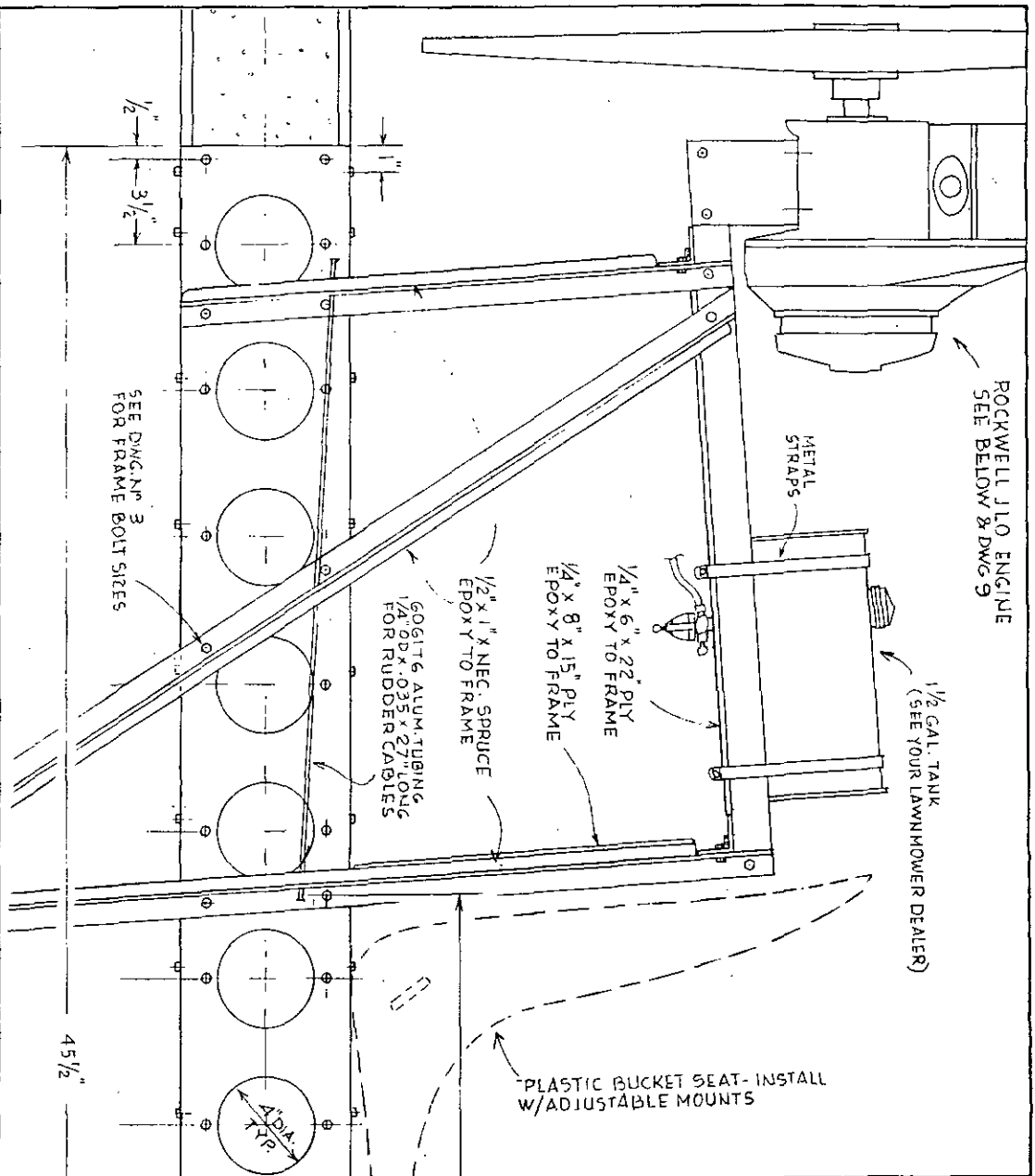
NOTE:

ALUMINUM ANGLE IS BY ITSELF
A STRUCTURALLY POOR MATERIAL,
AND MUST BE REINFORCED WHERE
LONG MEMBERS ARE USED.
SEE DWG N^o 4



USE -
AN4-5A BOLTS
AN 365-428 NUTS

SCALE AS SHOWN	BEBE	FUSELAGE FRAME	DRAWN BY H. BEAUJON	DRAWING N ^o 3
-------------------	------	----------------	------------------------	-----------------------------



← LINE UP THIS SIDE WITH DWG # 6

ROCKWELL J10, Model L-230

2 cycle, Single cylinder
 Weight: 29 lbs.
 15.5 H.P. @ 6000 R.P.M.
 11.5 H.P. @ 4500 R.P.M.
 with 36" dia., 16" pitch propeller

ESTIMATED PERFORMANCE

Top Speed: 65 M.P.H.
 Rate of Climb: 300 ft./min.
 Max. Ceiling: 8000 ft.

ROCKWELL J10, Model L-395

2 cycle, Single cylinder
 Weight: 59 lbs.
 24.5 H.P. @ 5500 R.P.M.
 22.0 H.P. @ 4500 R.P.M.
 with 36" dia., 20" pitch propeller

ESTIMATED PERFORMANCE

Top Speed: 80 M.P.H.
 Rate of Climb: 600 ft./min.
 Max. Ceiling: 14000 ft.

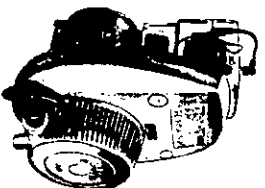
WHICH ENGINE?

Rockwell J10 engines are rapidly becoming very popular among ultralight builders. Durability and dependability closely approach that of 4 cycle engines, while maintaining a low weight to H.P. ratio. BEBE will use either of the two models shown below. Prices for these engines run less than \$200.00 per unit.

Engine, prop, hub, and mounting plate can be ordered ready to install!

From:
 BANKS-MAXWELL PROPELLER COMPANY
 P.O. Box 3301
 Ft. Worth, Texas 76105

→ LINE UP THIS SIDE WITH DWG. # 5



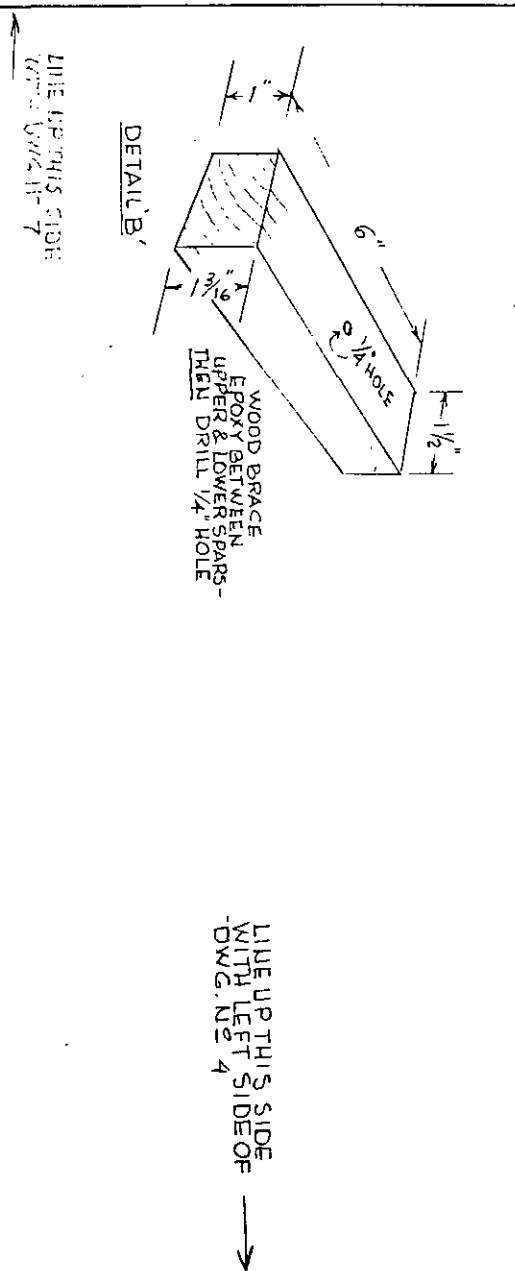
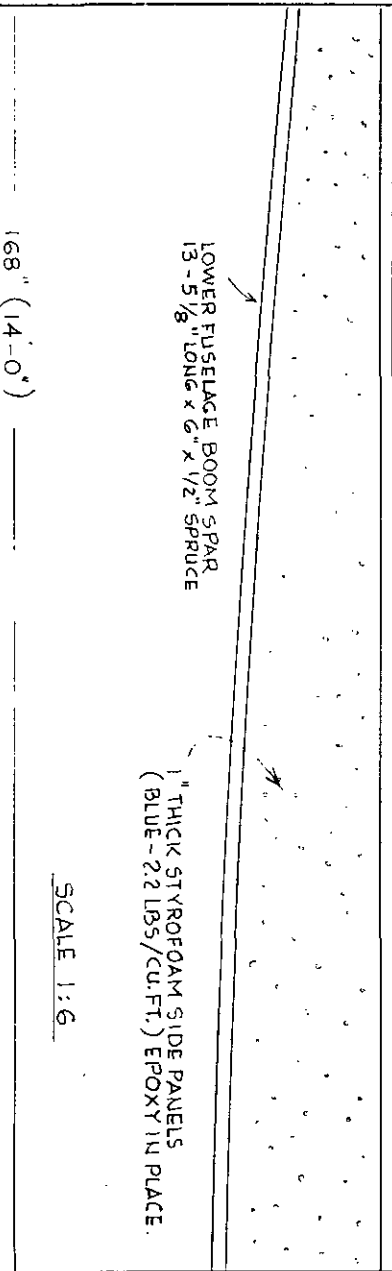
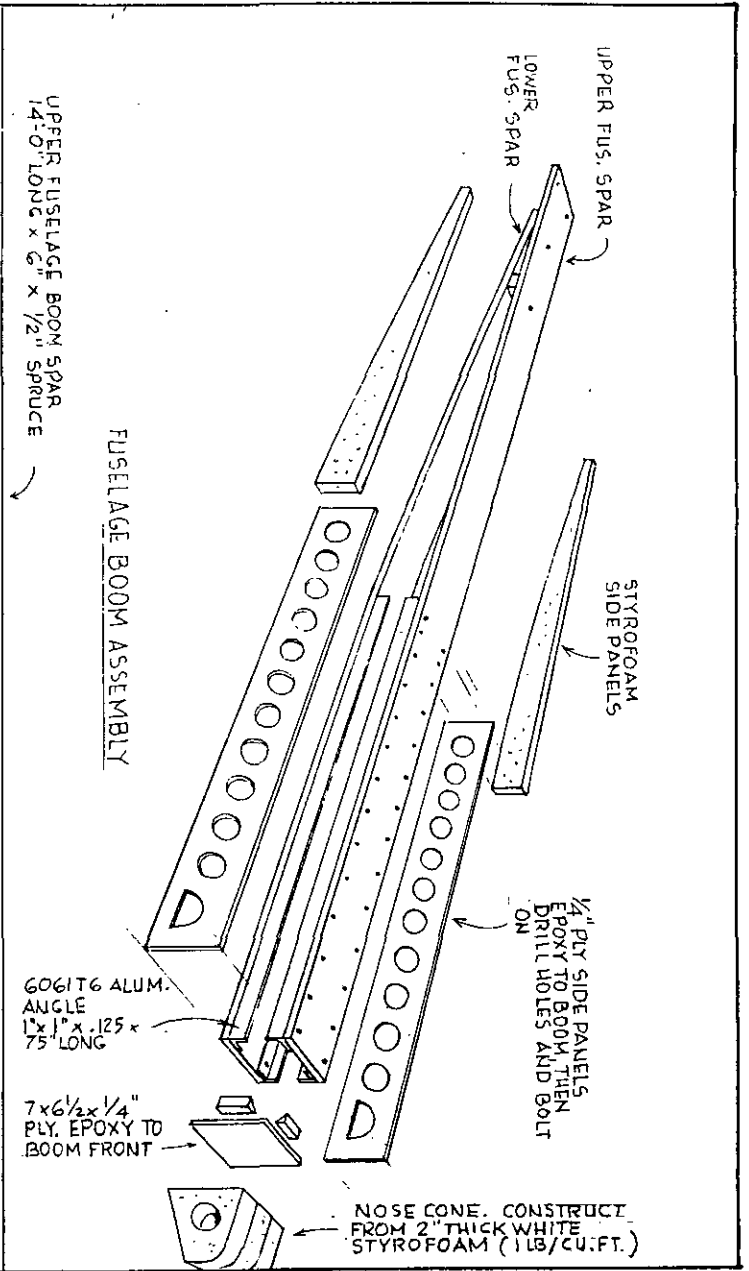
SCALE AS SHOWN

BEBE

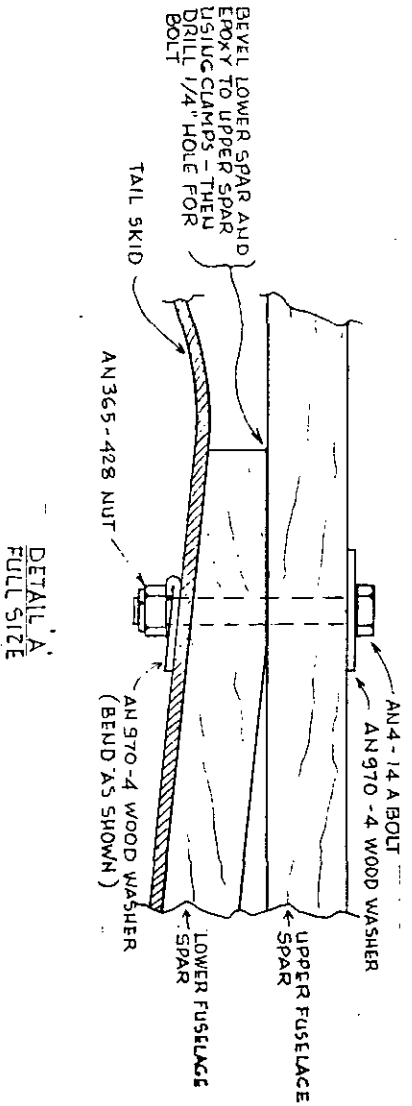
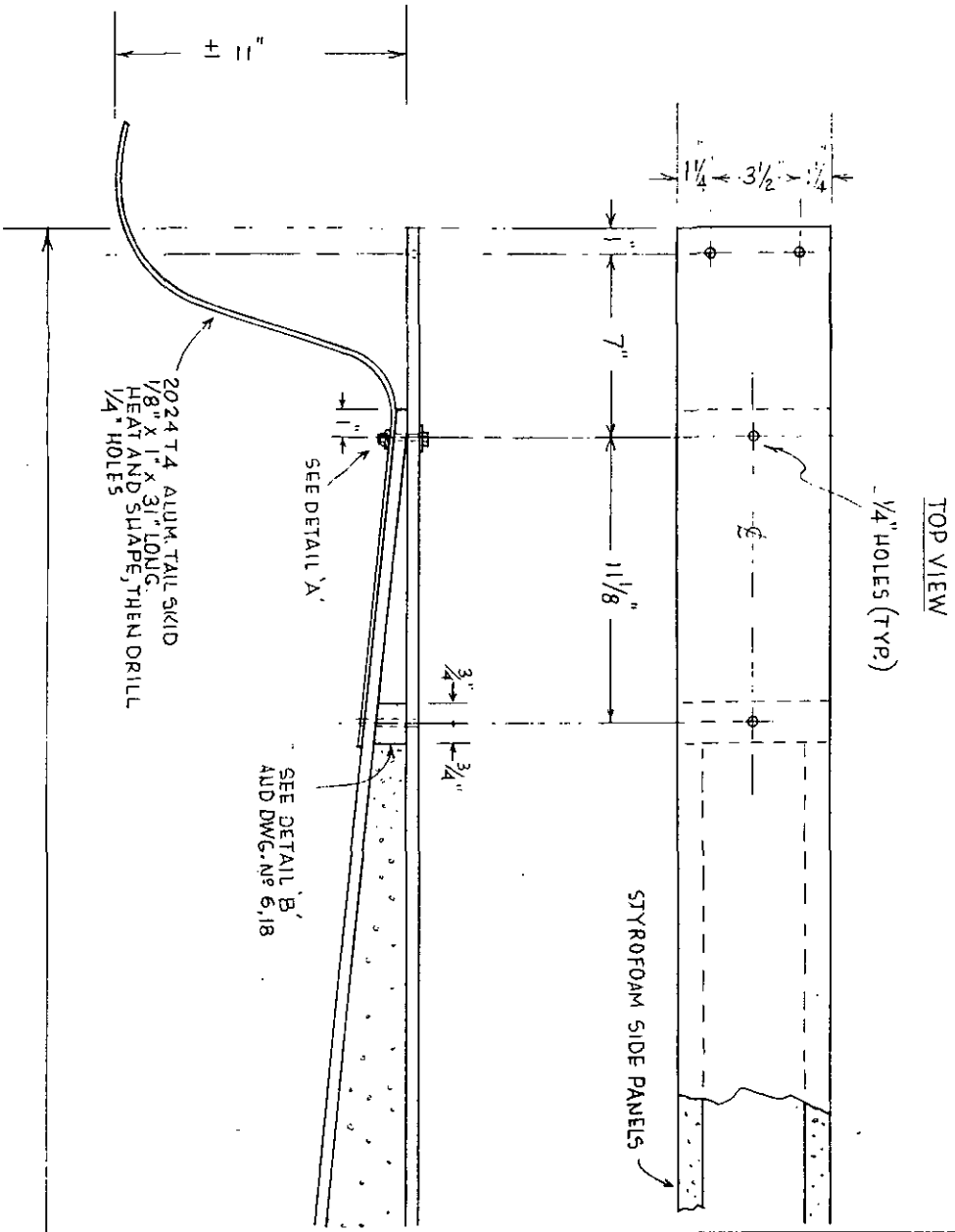
FUSELAGE BOOM

DRAWN BY H. BEAUJON

DRAWING NO. 4



SCALE AS SHOWN	BEBE	FUSelage BOOM	DRAWN BY H. BEAULON	DRAWING No 6
-------------------	------	---------------	------------------------	-----------------



LINE UP THIS SIDE WITH DWG # 6 →

SCALE AS SHOWN

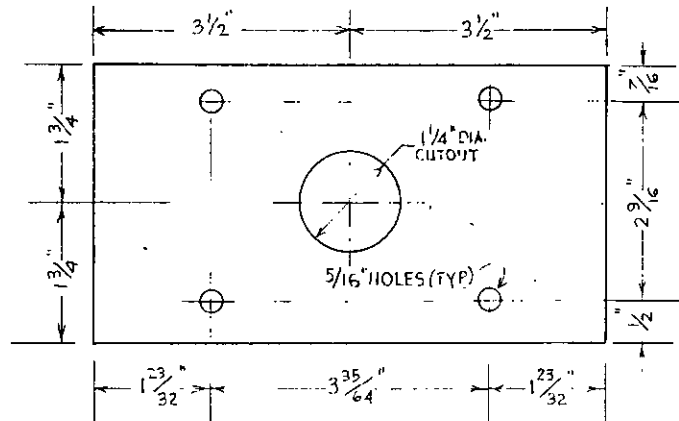
BEBE

FUSELAGE BOOM

DRAWN BY H. BEALLON

DRAWING NO 7

Dimensional Data/ Model L-230

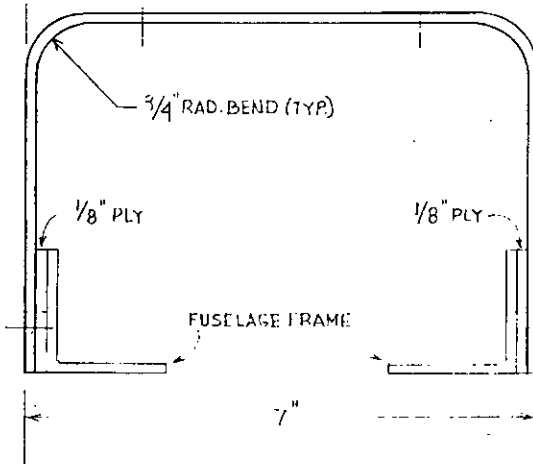
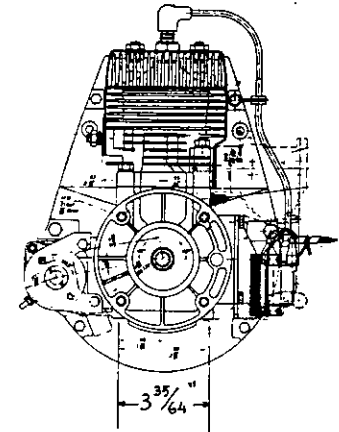


ENGINE MOUNTING PLATE

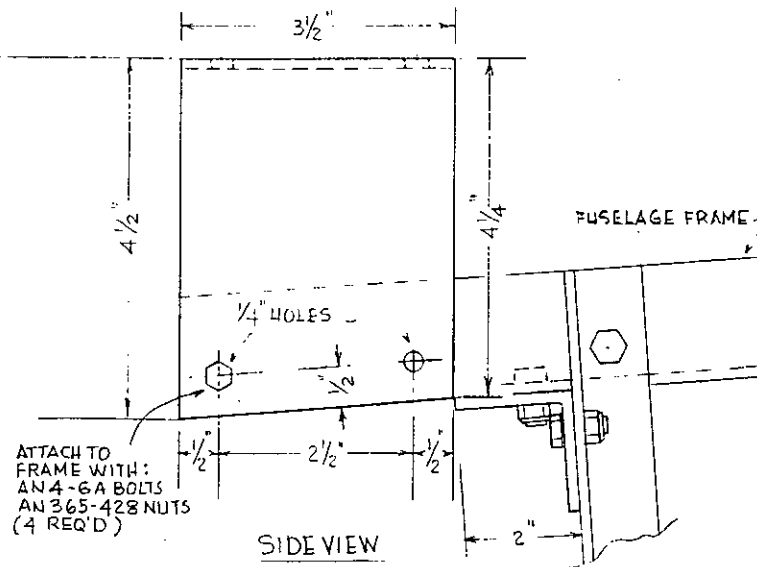
CUT FROM 2024 T3 ALUMINUM SHEET, .125 THICK
HEAT AND BEND TO SHAPE.

SPACING OF 5/16" ENGINE MOUNTING BOLT HOLES ARE
FOR THE ROCKWELL J10 MODEL L-230 ENGINE.

SCALE 1:2

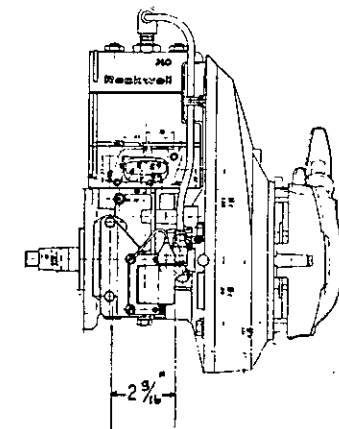


REAR VIEW



SIDE VIEW

ATTACH TO
FRAME WITH:
AN4-6A BOLTS
AN365-428 NUTS
(4 REQ'D)



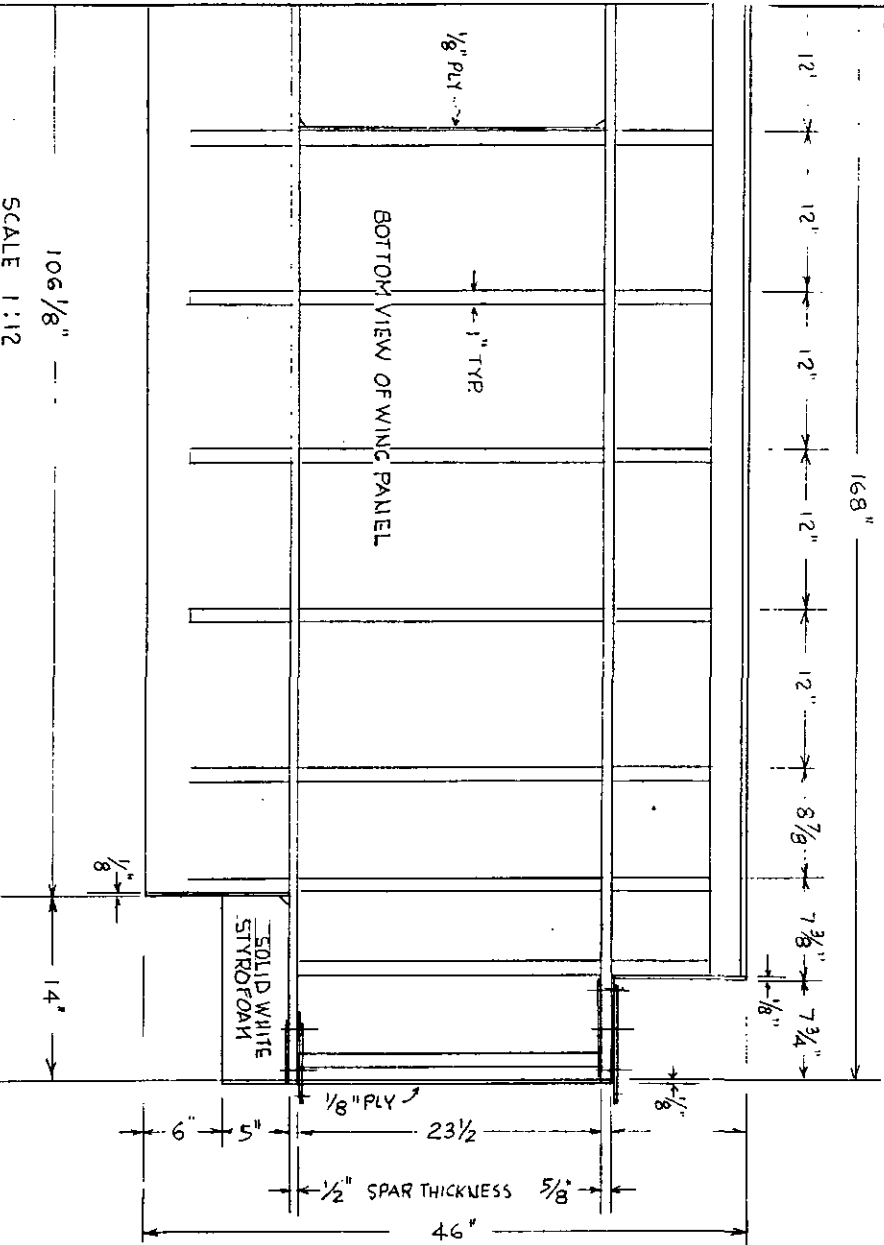
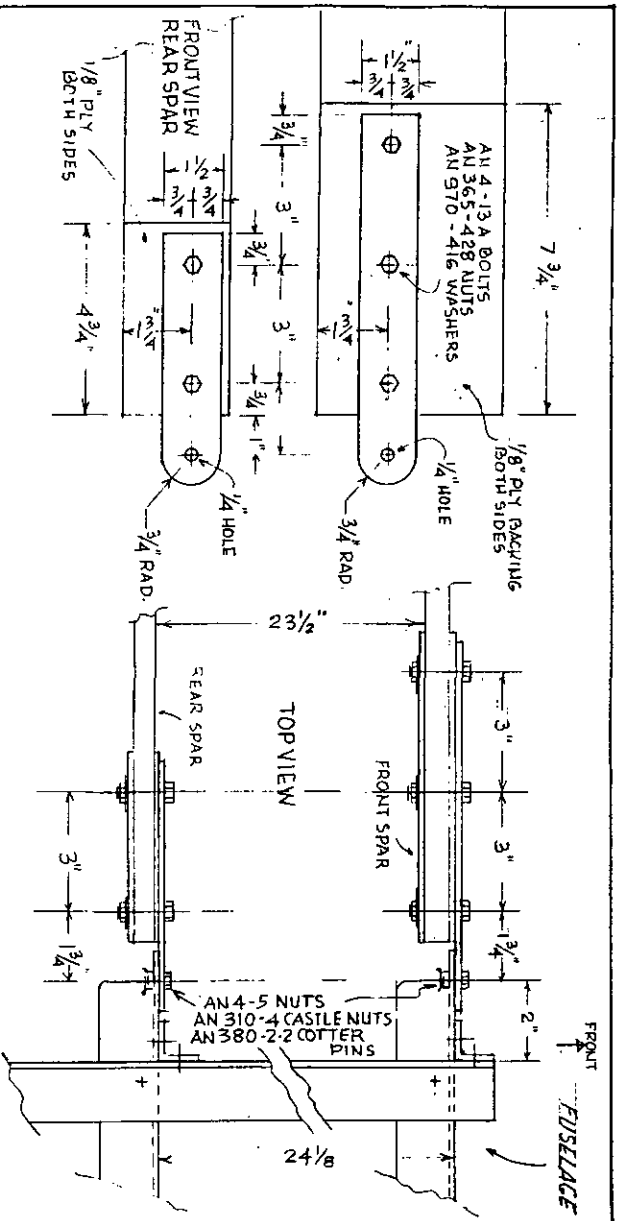
SCALE
AS SHOWN

BEBE

ENGINE
MOUNT

DRAWN BY
H. BEALJON

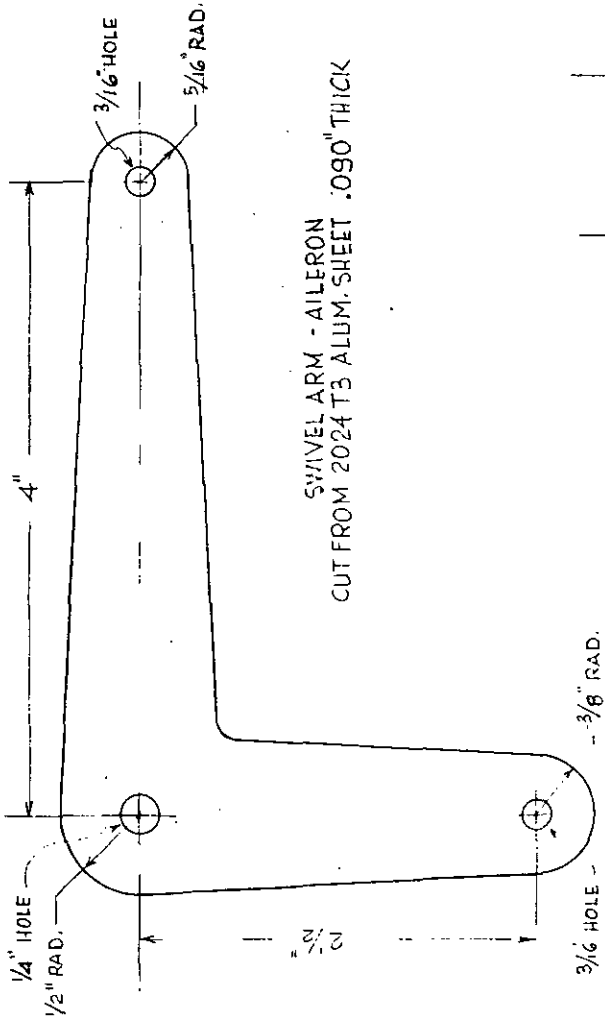
DRAWING NO
9



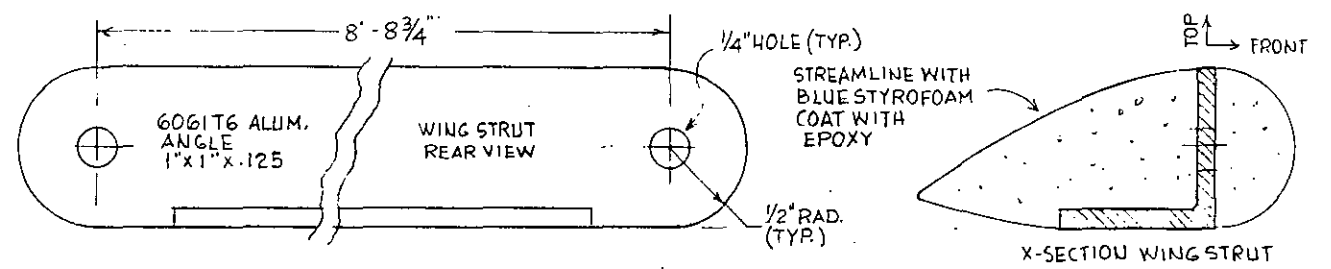
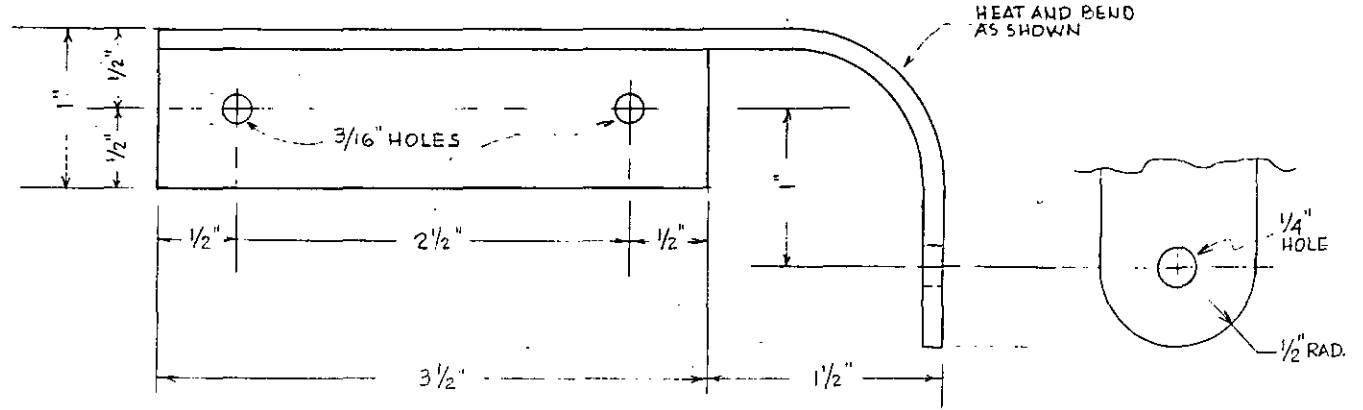
LINE UP THIS SIDE WITH DWG # 10

SCALE AS SHOWN	BEBE WING DETAILS	DRAWN BY H. BEAUJON	DRAWING N° 11
----------------	-------------------	---------------------	---------------

SWIVEL ARM SUPPORT -AILERON
 CUT FROM 6061 T6 ALUM. ANGLE 1"x1"x.125



SWIVEL ARM -AILERON
 CUT FROM 2024 T3 ALUM. SHEET .090" THICK

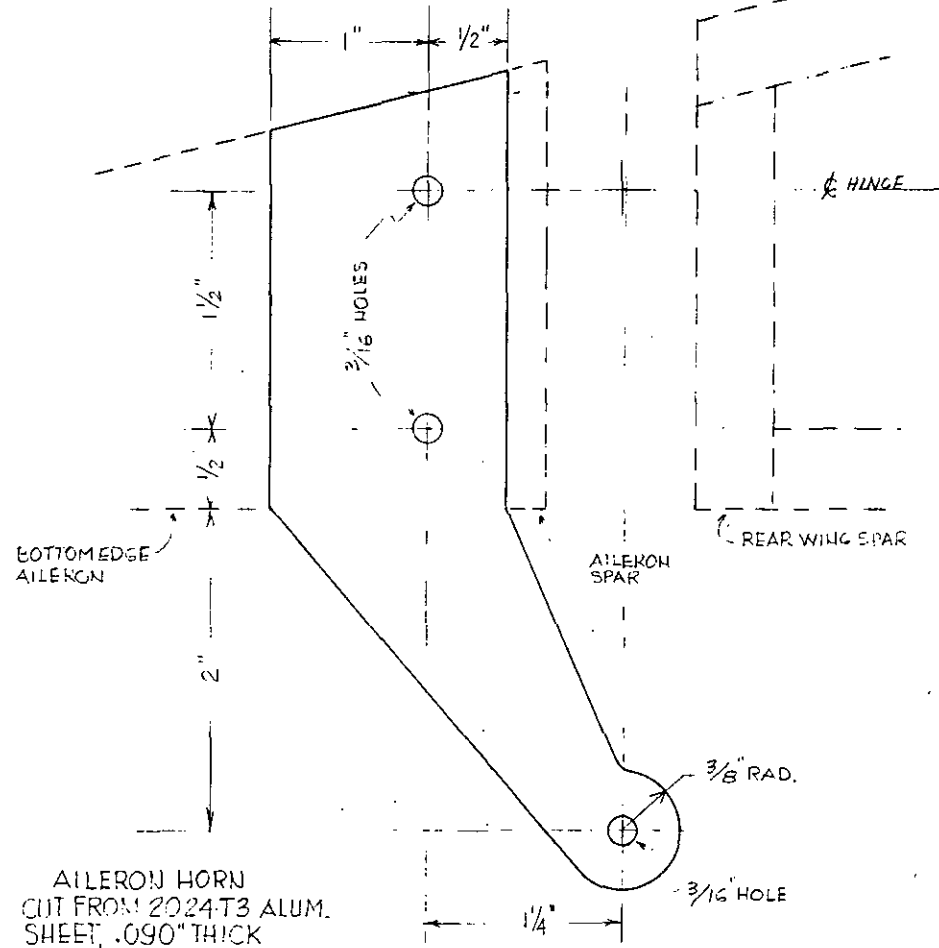
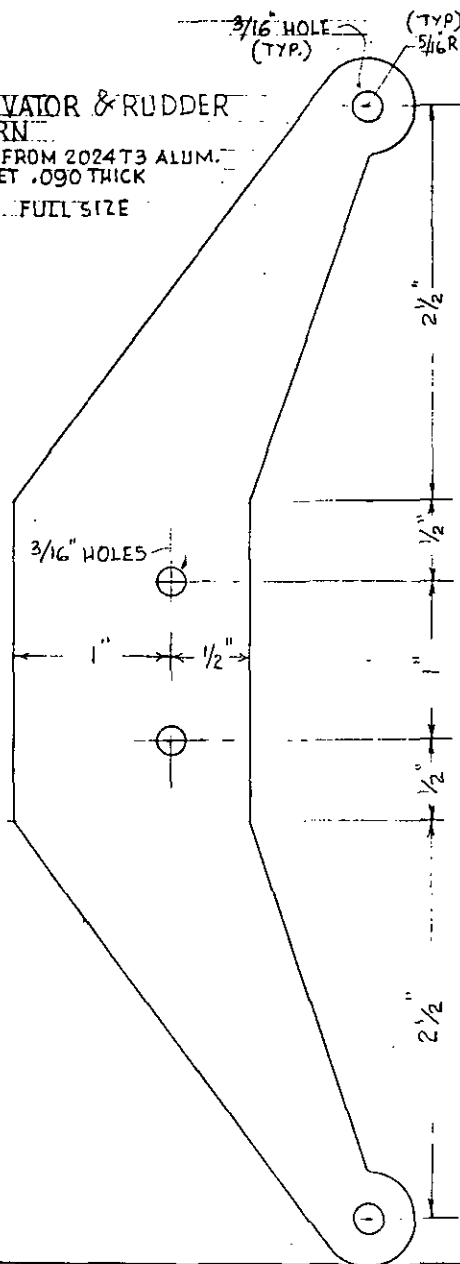


SCALE FULL	BEBE	WING DETAILS	DRAWN BY H. BEAUJON	DRAWING NO 13
---------------	------	--------------	------------------------	------------------

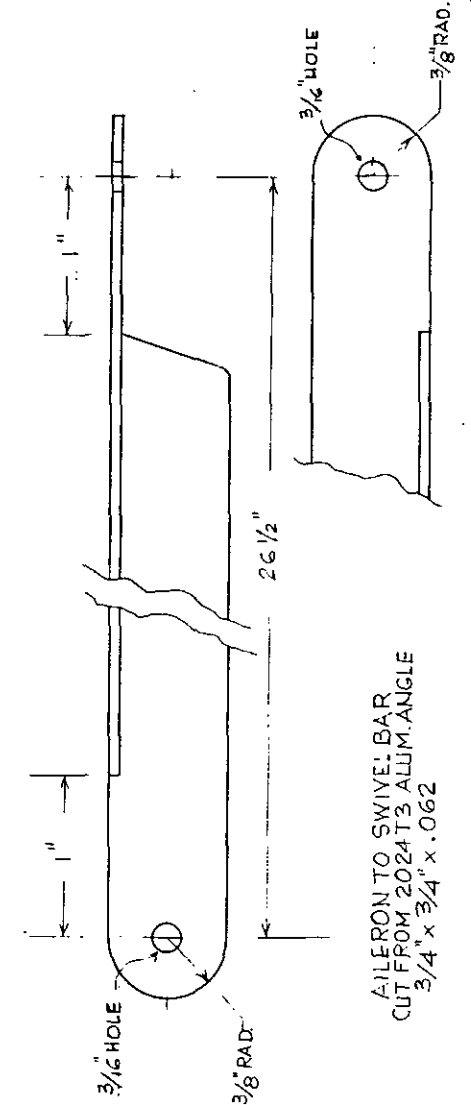
ELEVATOR & RUDDER HORN

CUT FROM 2024 T3 ALUM. SHEET .090 THICK

FULL SIZE

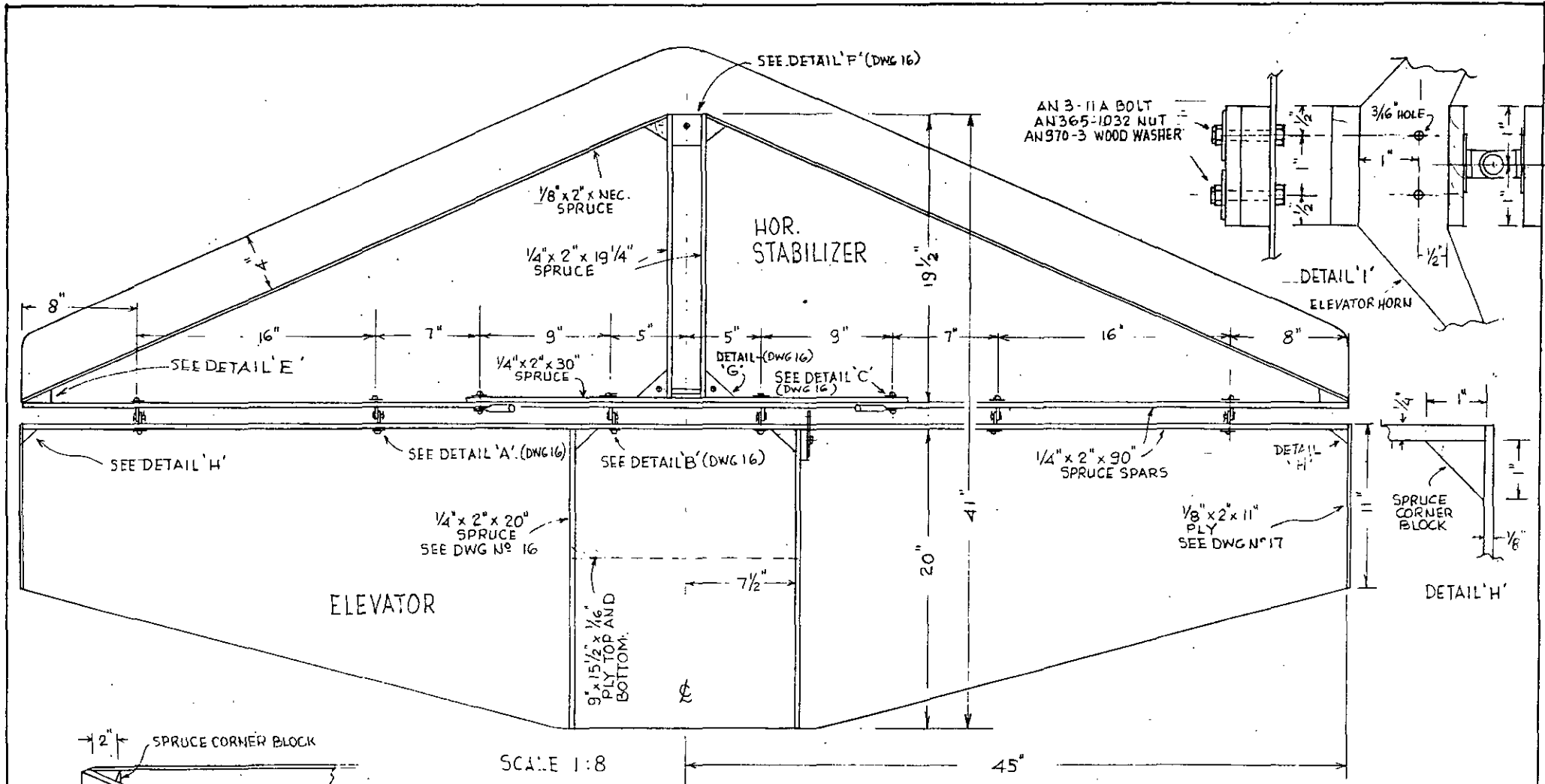


AILERON HORN
CUT FROM 2024-T3 ALUM.
SHEET, .090" THICK

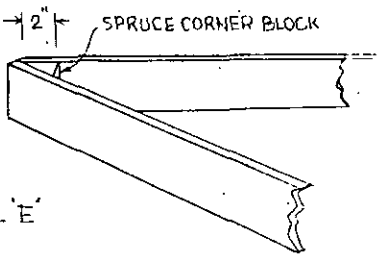
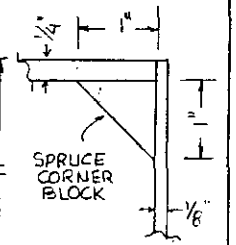
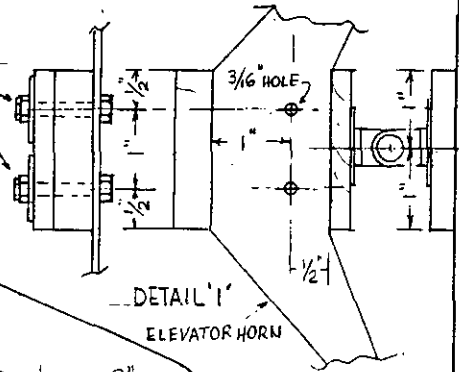


AILERON TO SWIVEL BAR
CUT FROM 2024 T3 ALUM. ANGLE
3/4" x 3/4" x .062

SCALE FULL	BEBE WING & TAIL GROUP DETAILS	DRAWN BY H. BEAUJON	DRAWING NO 14
---------------	--------------------------------	------------------------	------------------



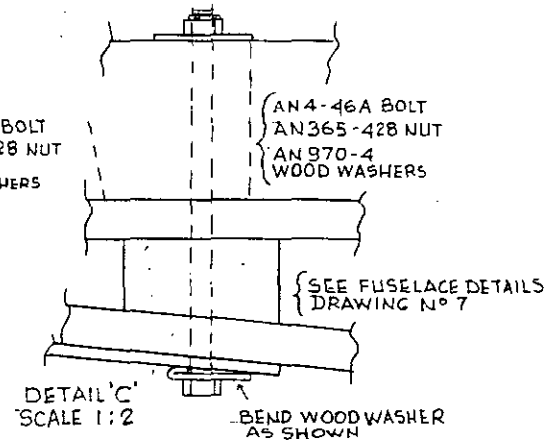
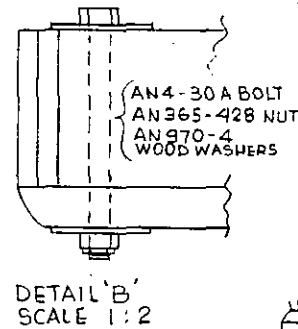
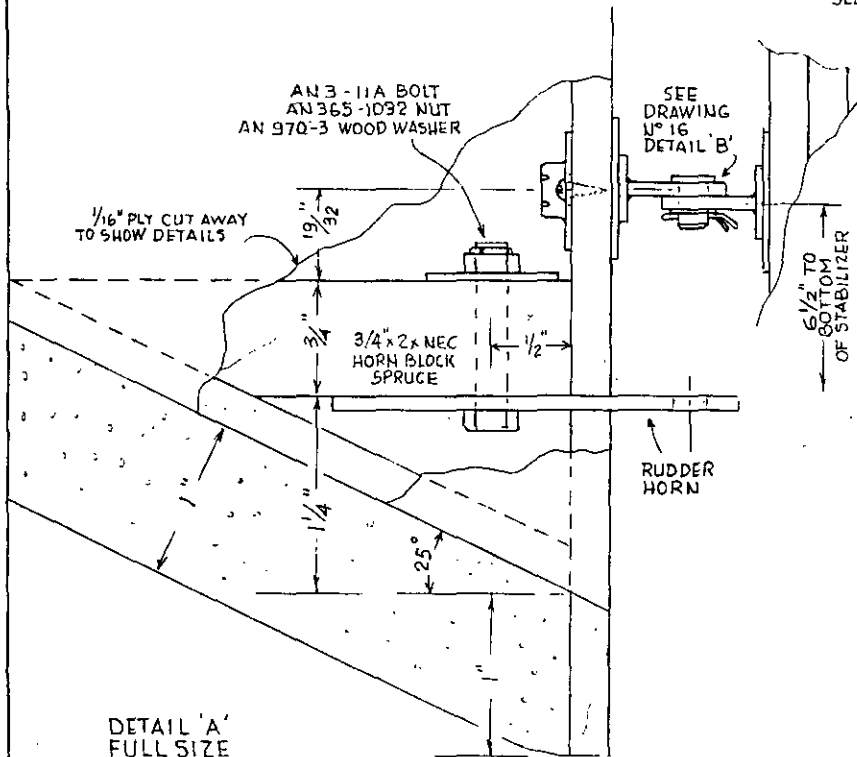
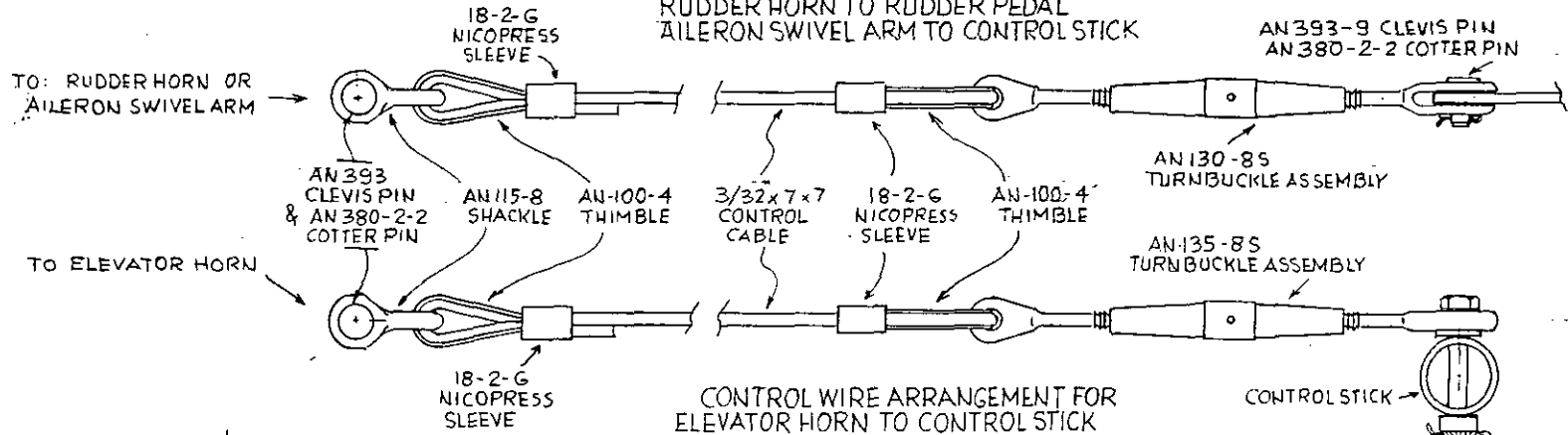
AN3-11A BOLT
AN365-1032 NUT
AN970-3 WOOD WASHER



NOTE: USE 1 LB./CU. FT WHITE STYROFOAM, 2" THICK. FINISH SURFACE WITH SQUEEGEED LAYER OF EPOXY. ALL WOOD PARTS GLUED WITH EPOXY.

SCALE AS SHOWN	BEBE TAIL GROUP	DRAWN BY H. BEALON	DRAWING N° 15
-------------------	--------------------	-----------------------	------------------

CONTROL WIRE ARRANGEMENT FOR
RUDDER HORN TO RUDDER PEDAL
AILERON SWIVEL ARM TO CONTROL STICK



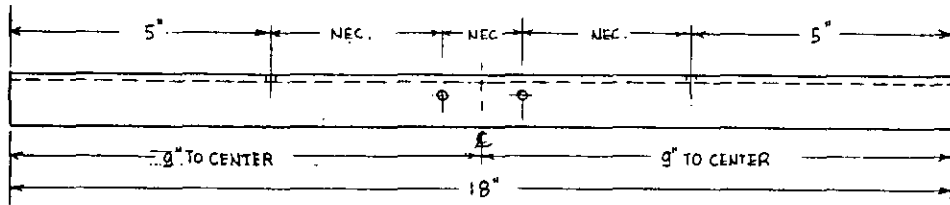
SCALE
AS SHOWN

BEBE

TAIL GROUP/CONTROLS

DRAWN BY
W. BEALON

DRAWING N°
18



RUDDER PEDAL ARM
 1" x 1" x .125" x 18" LONG
 6061 T6 ALUMINUM ANGLE

CONNECT TO CASTER WITH:
 AN 3-5A BOLTS
 AN 365-1032 NUTS

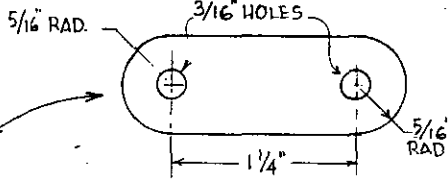
200 LB. CAP CASTER

CONNECT CASTER & WOOD
 BASE TO TOP OF LOWER
 FUSELAGE BOOM SPAR
 (SEE DWG. N° 5)

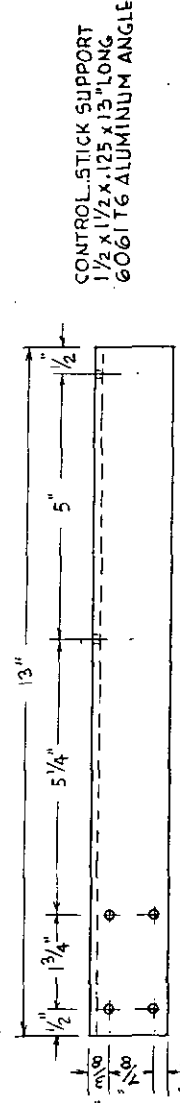
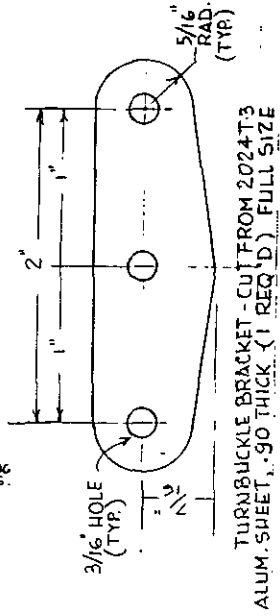
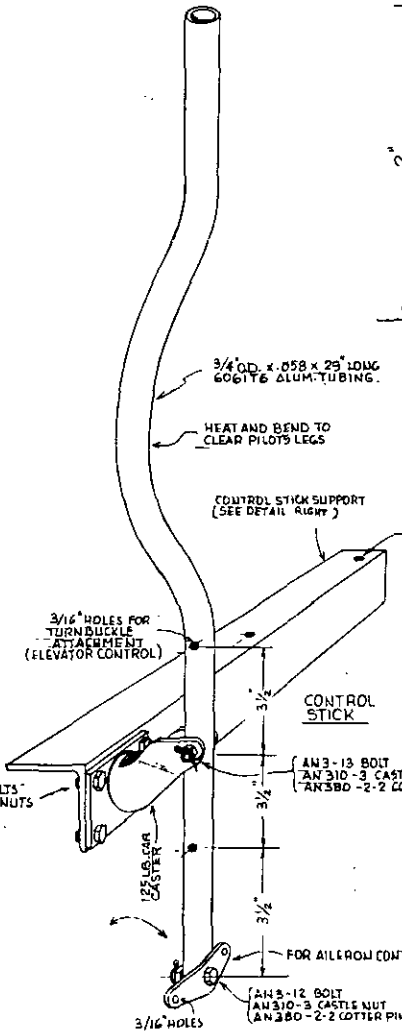
AN 3-20A BOLT
 AN 365-1032 NUT
 AN 970-3 WOOD WASHER

3" x 3 1/2" x 1" WOOD BASE

REMOVE WHEEL FROM CASTER,
 HEAT AND BEND EARS BACK,
 ENLARGE AXLE HOLES TO 3/16"
 DIAMETER.

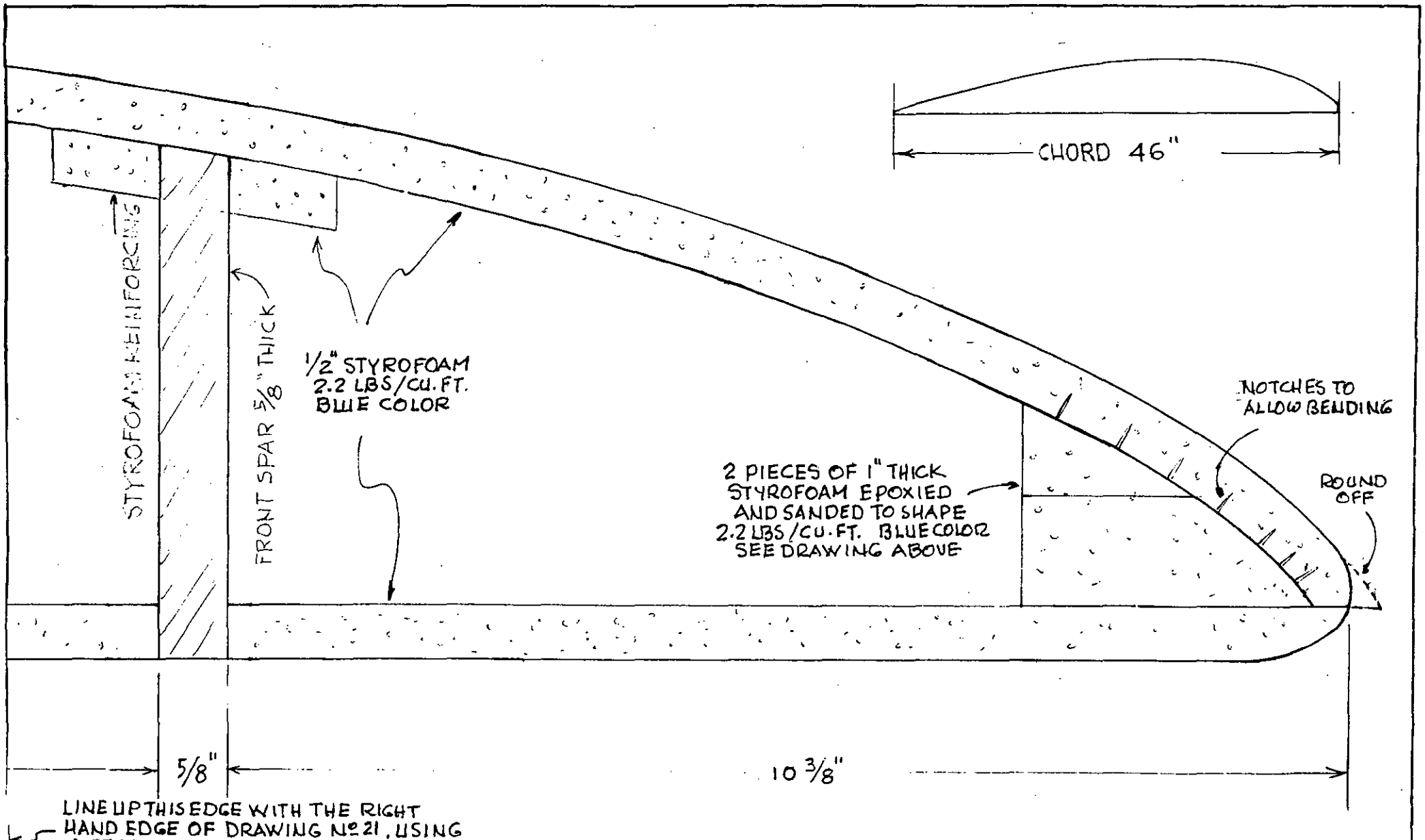


TURNBUCKLE BRACKET
 CUT FROM 2024 T3 ALUM. SHEET
 .90" THICK - FULL SIZE
 (2 REQ'D)

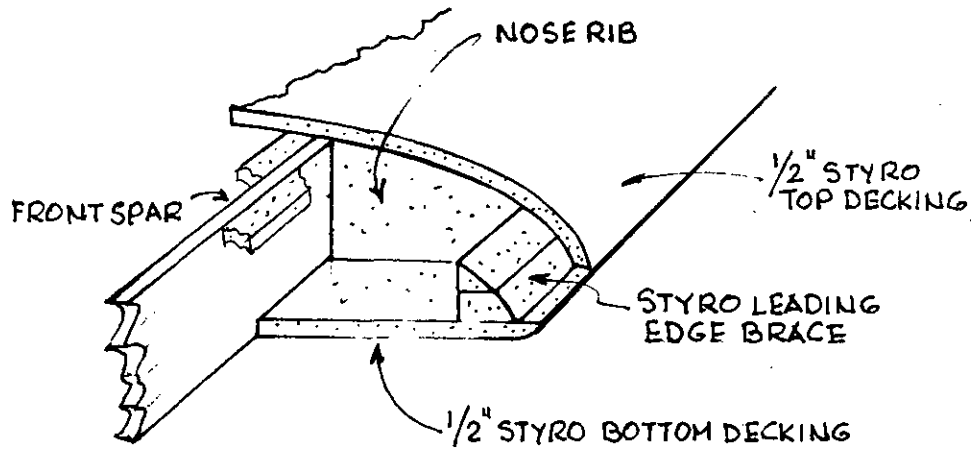


SCALE 1:3

SCALE AS SHOWN	BEBE CONTROLS	DRAWN BY H. BEAUJON	DRAWING N° 19
-------------------	------------------	------------------------	------------------



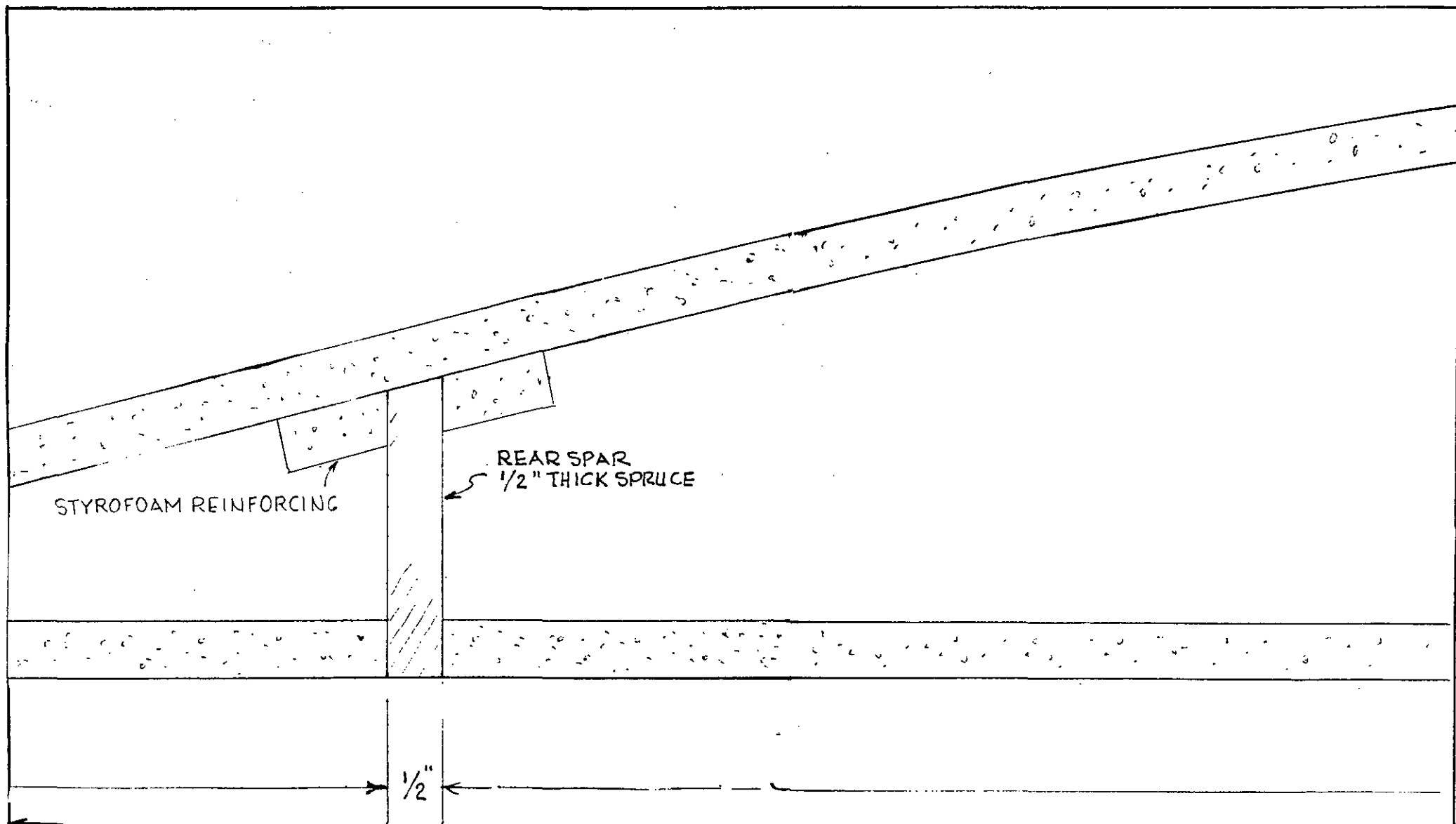
SCALE FULL	'BEBE' WING X-SECTION	DRAWN BY H. BEAUJON	DRAWING No 20
---------------	-----------------------	------------------------	------------------



— 23 1/2" INSIDE EDGES OF SPARS —

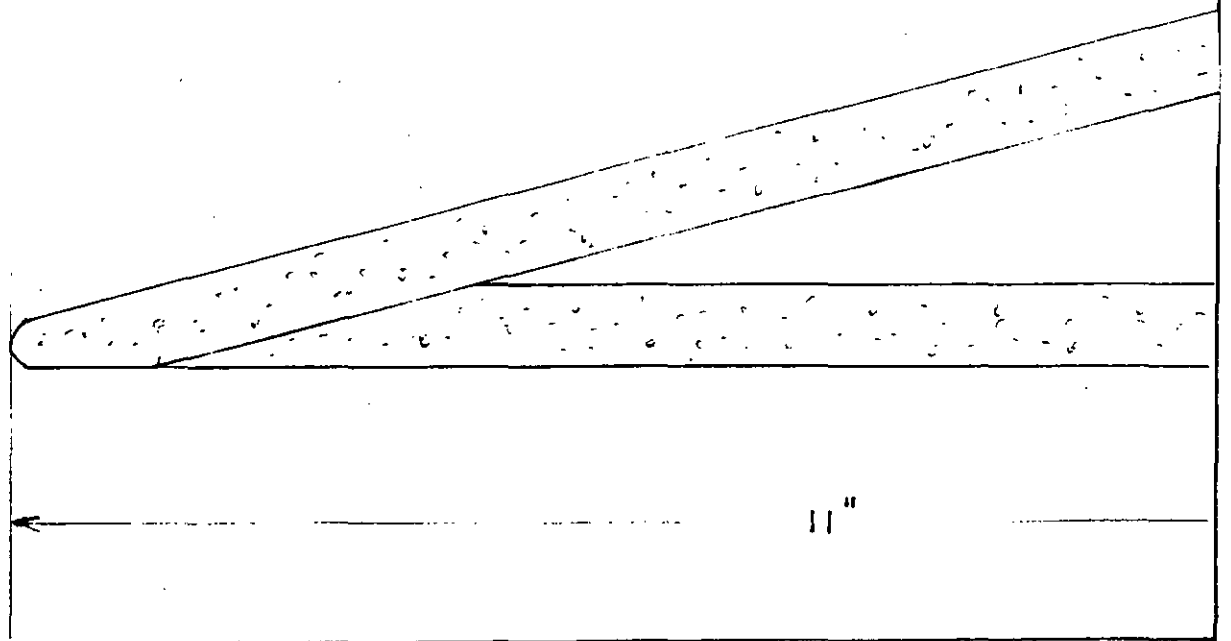
← LINE UP THIS EDGE WITH THE RIGHT HAND EDGE OF DRAWING N° 22, USING A STRAIGHT EDGE TO KEEP BOTTOM OF WING SECTION STRAIGHT. TAPE SHEETS TOGETHER.

SCALE FULL	'BEBE' WING X-SECTION	DRAWN BY H. BEAUJON	DRAWING N° 21
---------------	-----------------------	------------------------	------------------



LINE UP THIS EDGE WITH THE RIGHT HAND HAND EDGE OF DRAWING N°23, USING A STRAIGHT EDGE TO KEEP BOTTOM OF WING SECTION STRAIGHT. TAPE SHEETS TOGETHER.

SCALE FULL	'BEBE' WING X-SECTION	DRAWN BY H. BEAUJON	DRAWING N° 22
---------------	-----------------------	------------------------	------------------



SCALE
FULL

BEBE WING X-SECTION

DRAWN BY
H. BEAUFON

DRAWING NO.
23 89