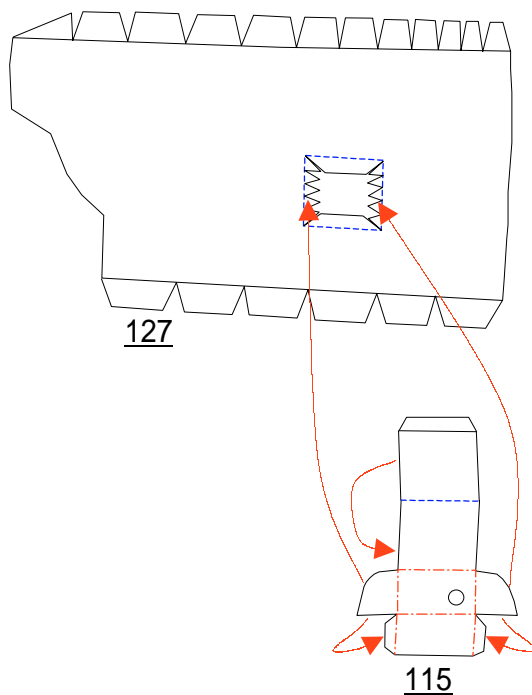
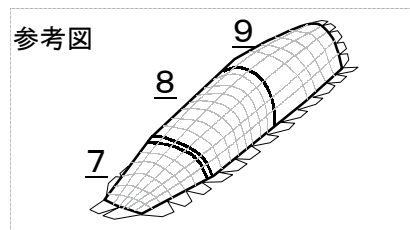
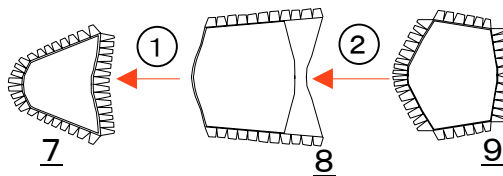


3. 車輪を付けるときに組み立てます。車輪を付けないときは不要です。
107と～128の部品も同様に組み立てます。

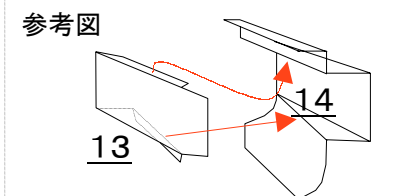
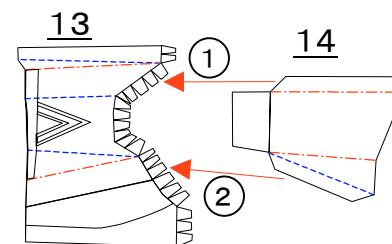


4. 下の参考図の様にカーブを付けて接着します。

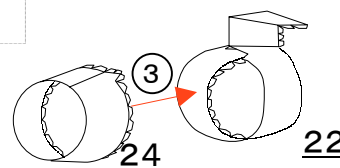
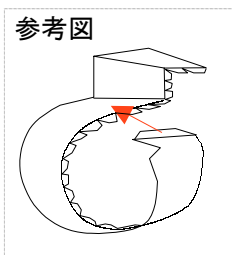
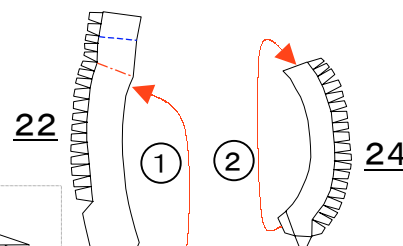


5. 各部分を曲げた後参考図のように13の裏側に14を接着します。

11、12も同様に組み立てます

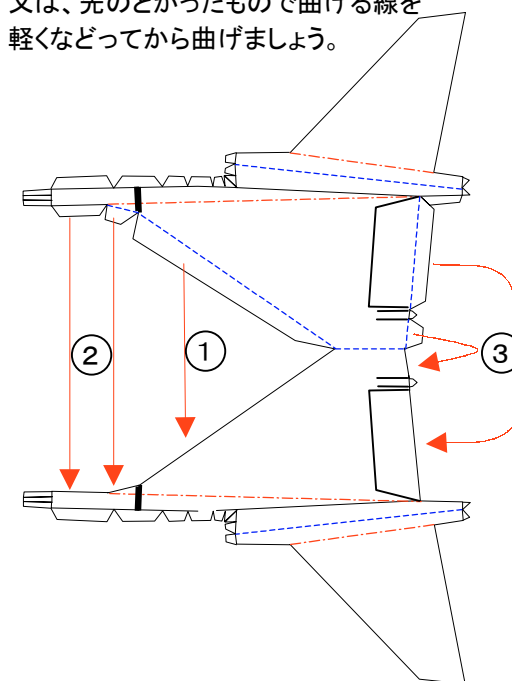


6. 各丸くカーブ御付けて接着します。
22は図1のように途中に接着し22と24を接着します
21、23も同様に組み立てます。



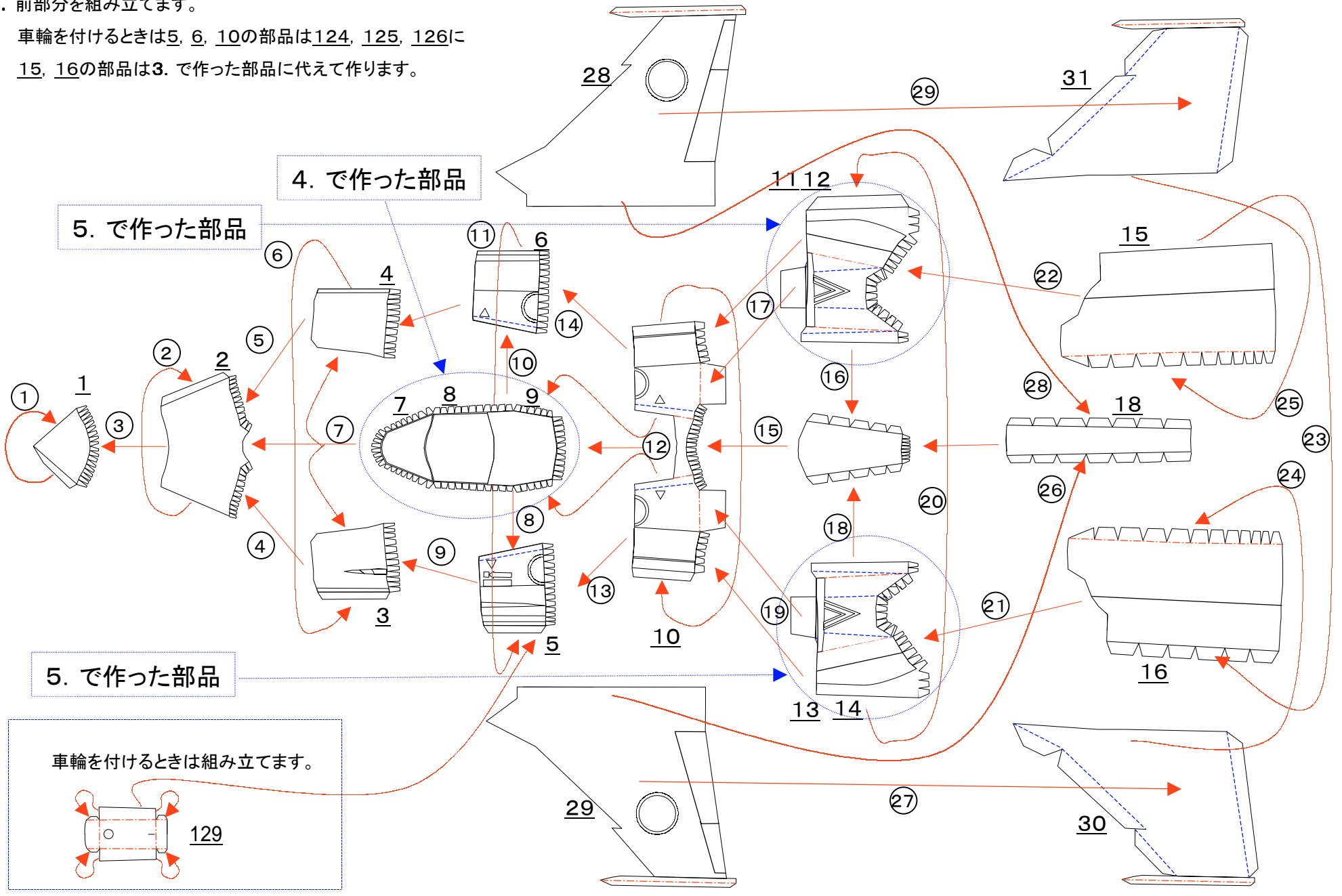
7. 各部分を折り曲げたあと接着します。

狭い部分などは定規を当てて曲げるか
又は、先のとがったもので曲げる線を
軽くなどってから曲げましょう。

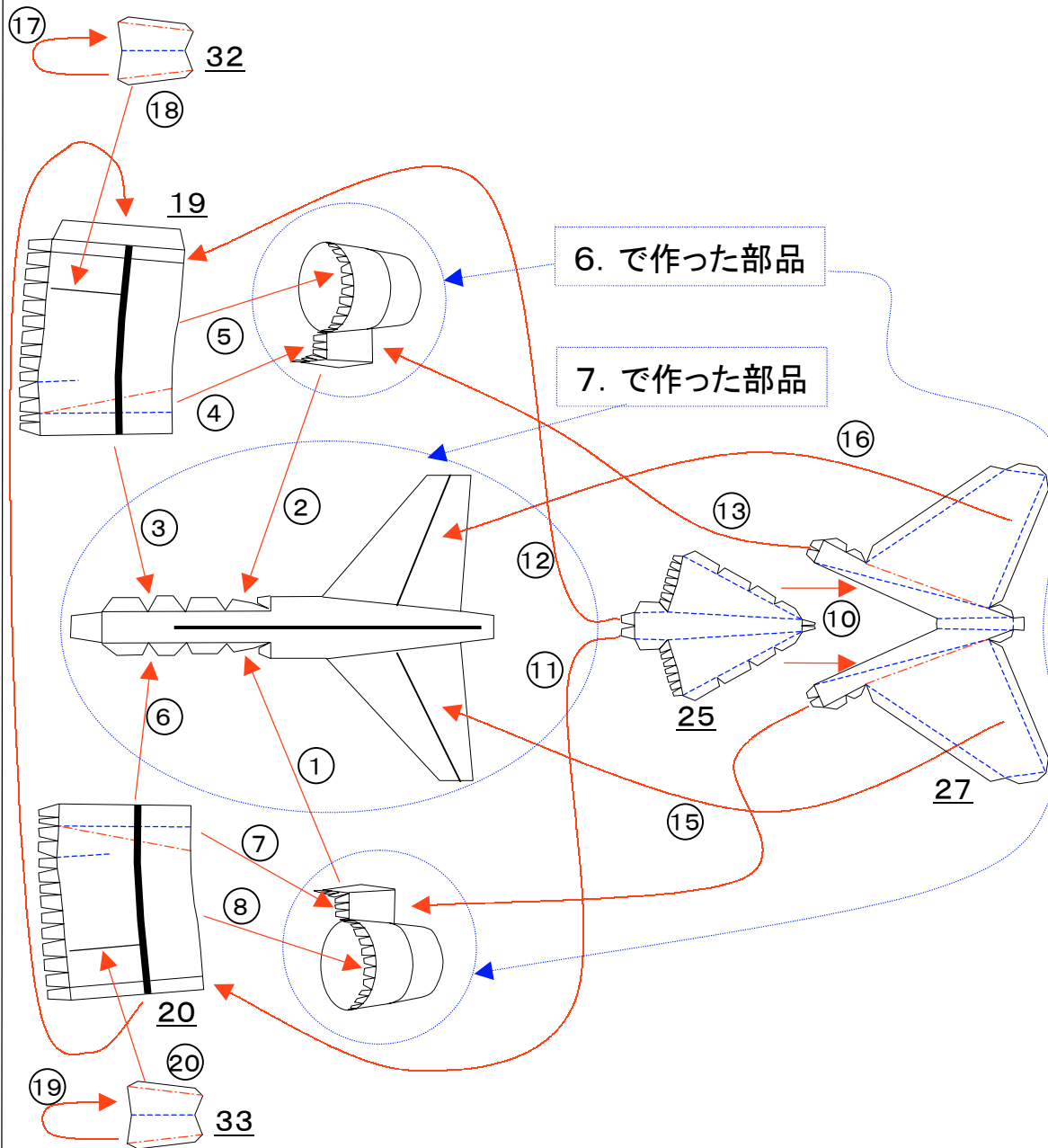


8. 前部分を組み立てます。

車輪を付けるときは5, 6, 10の部品は124, 125, 126に
15, 16の部品は3. で作った部品に代えて作ります。

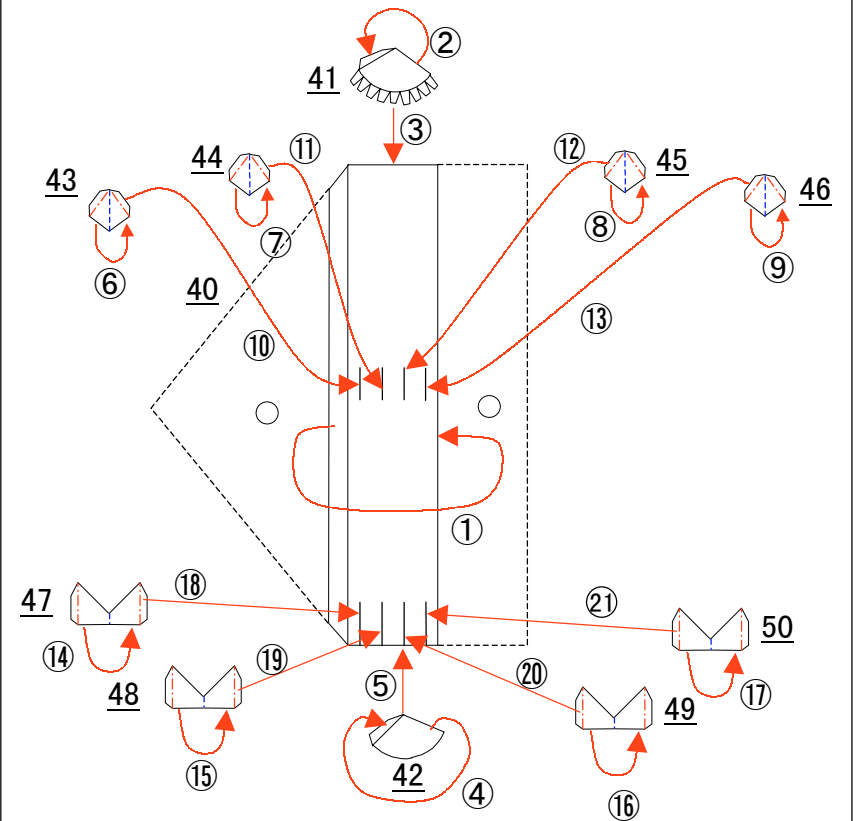


9. 後部分を組み立てます。

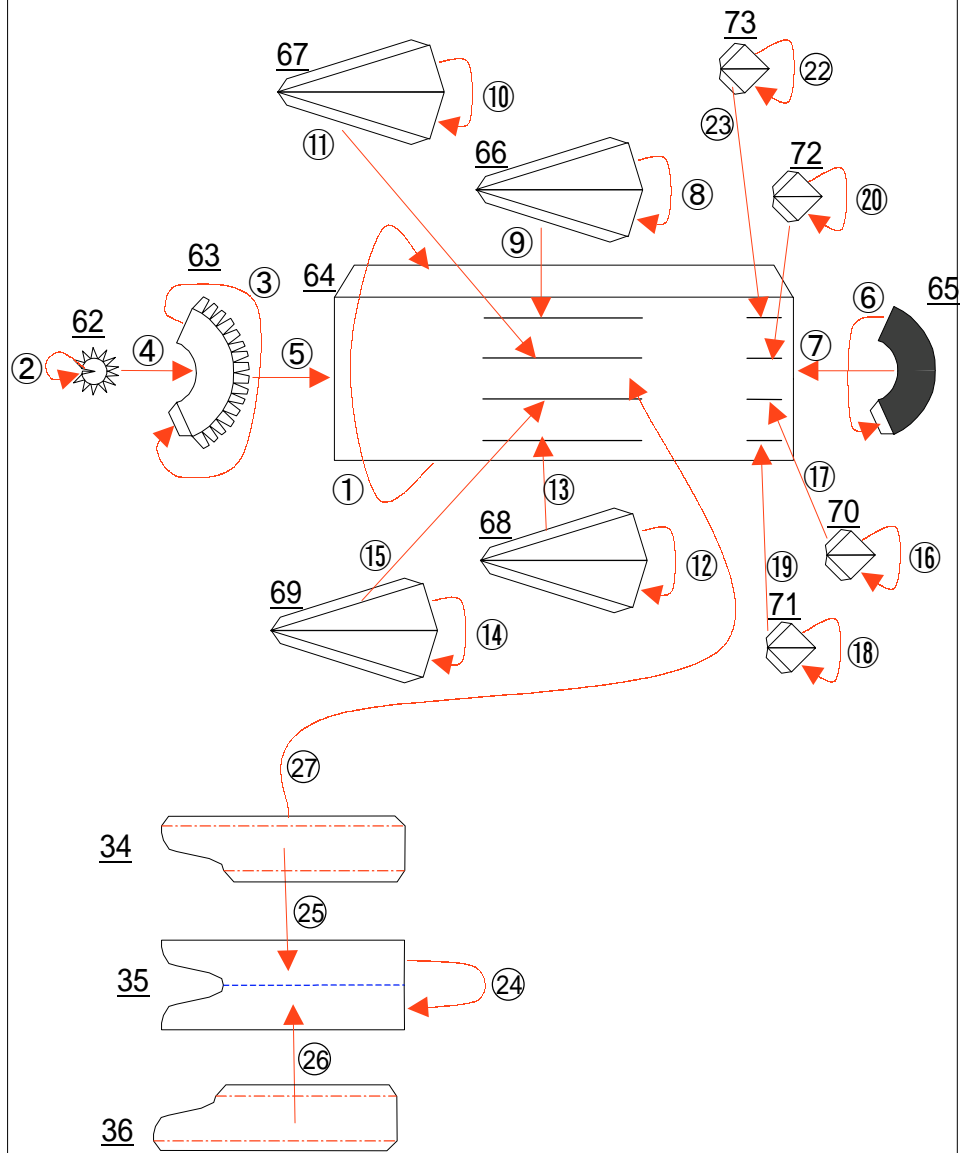


10. 点線部分で切り取ってのり代がわの角から丸めて、丸め終わったら○の部分切り離してから接着します。

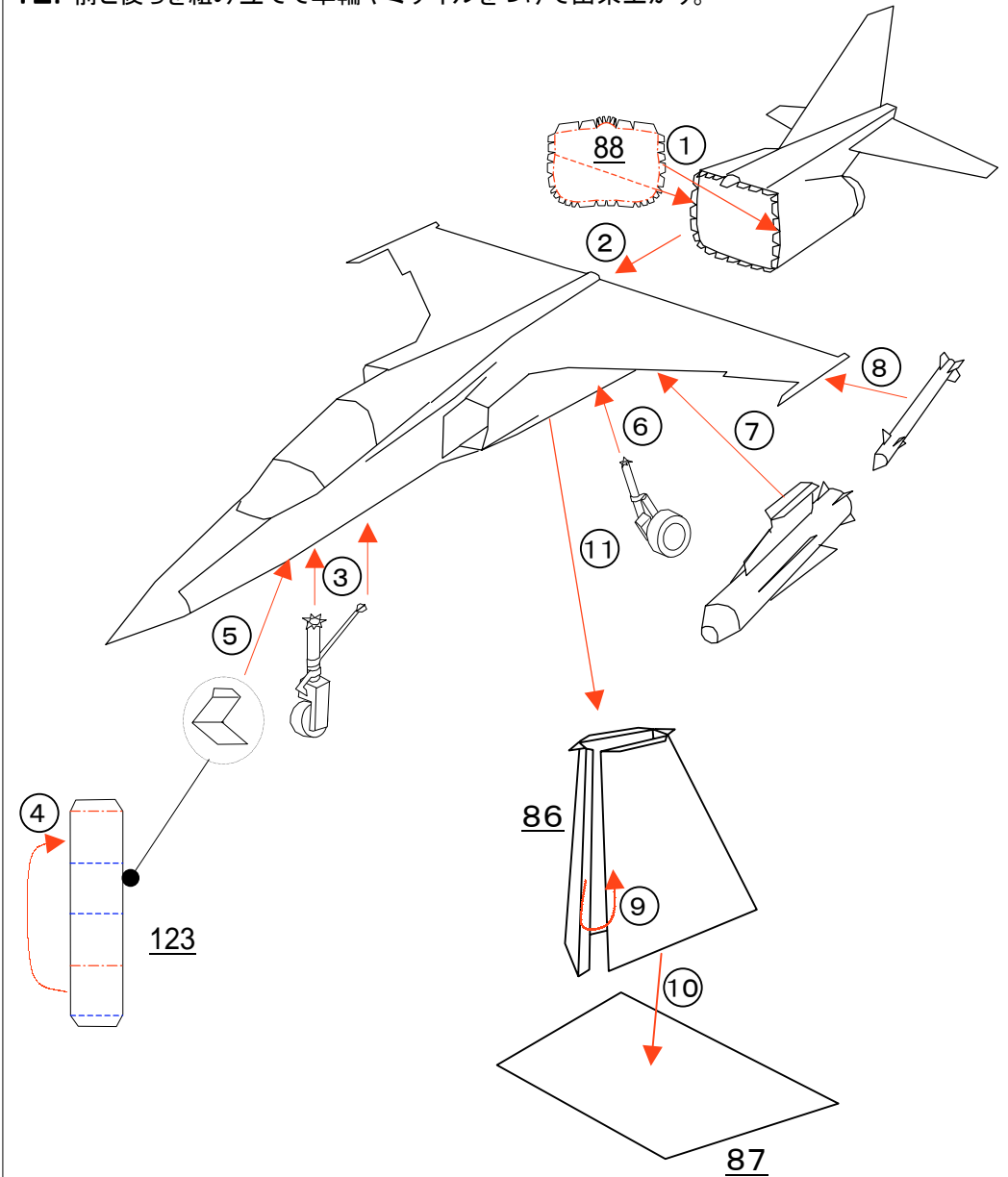
51~61も同様に組み立てます。

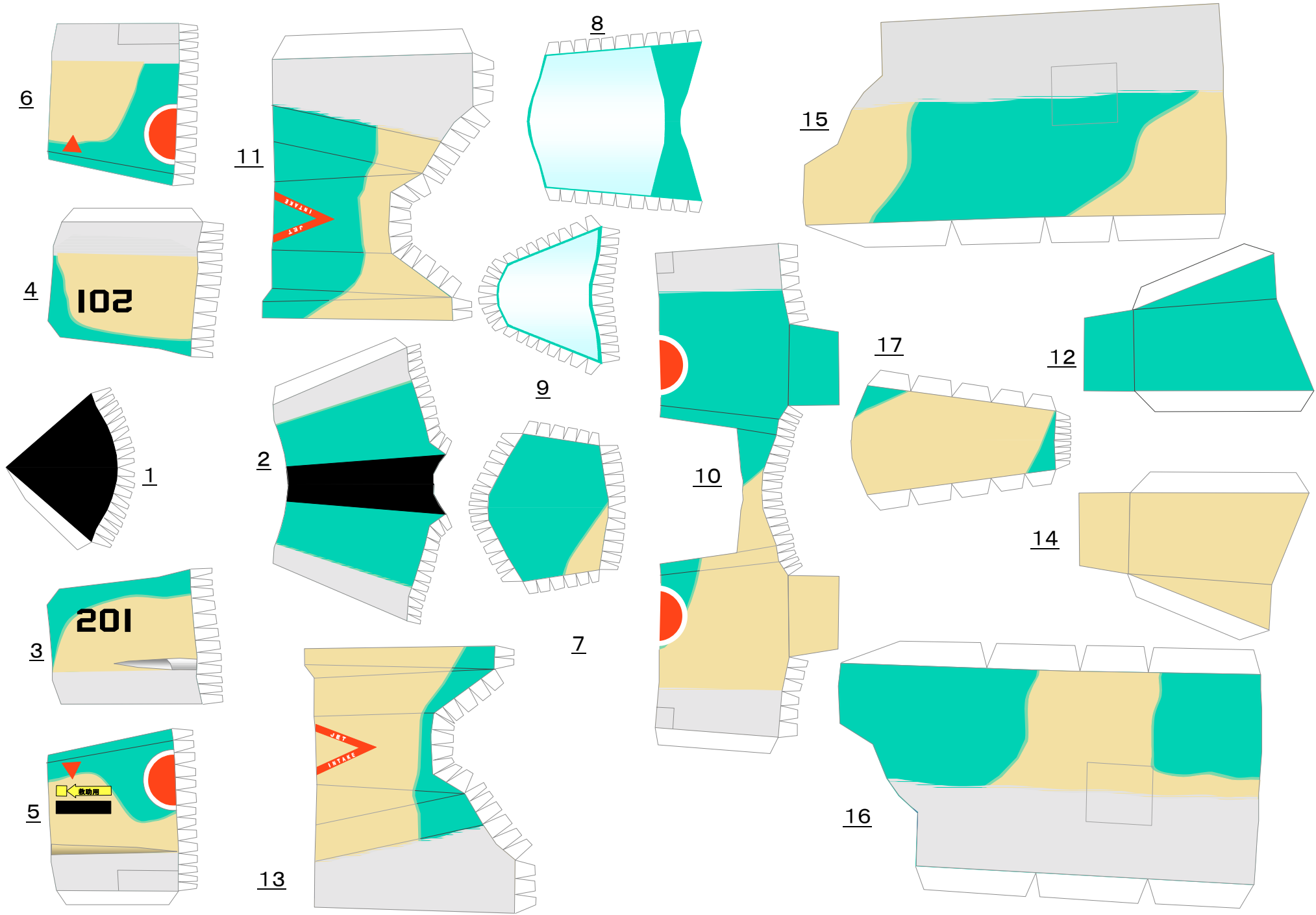


11. 34~36・62~73を組み立てて37~39・74~85も同様に組み立てます。

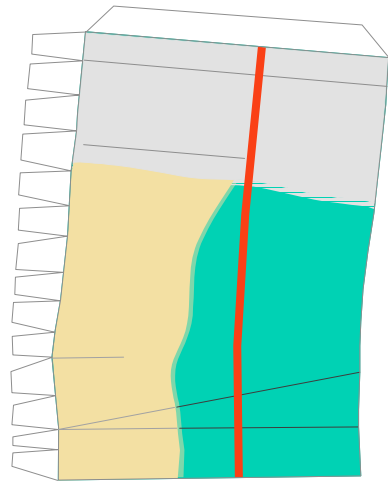


12. 前と後ろを組み立てて車輪やミサイルをつけて出来上がり。

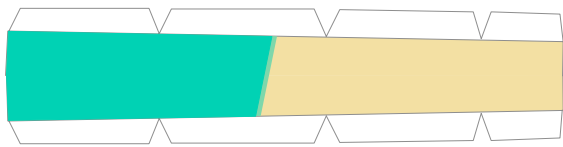




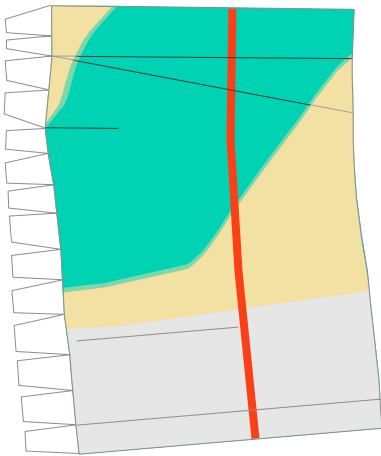
19



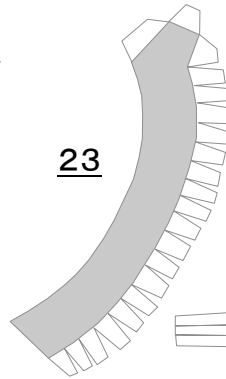
18



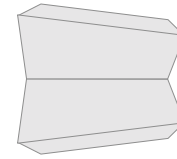
20



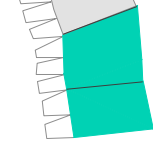
23



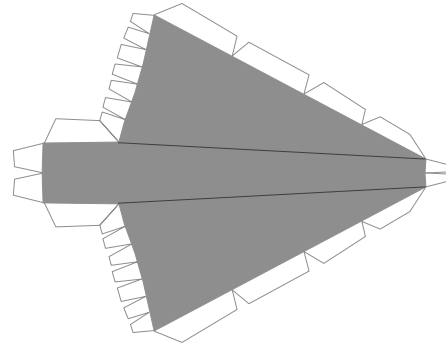
32



21



25

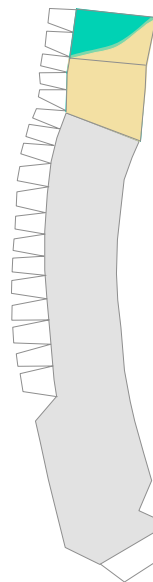


26

1028-02



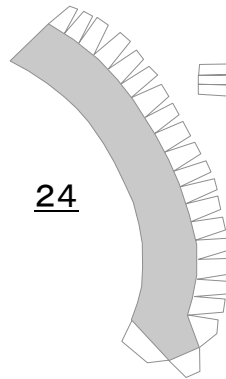
22



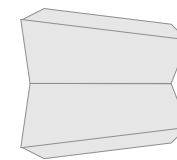
70-8201

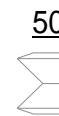
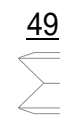
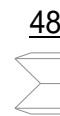
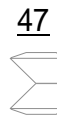
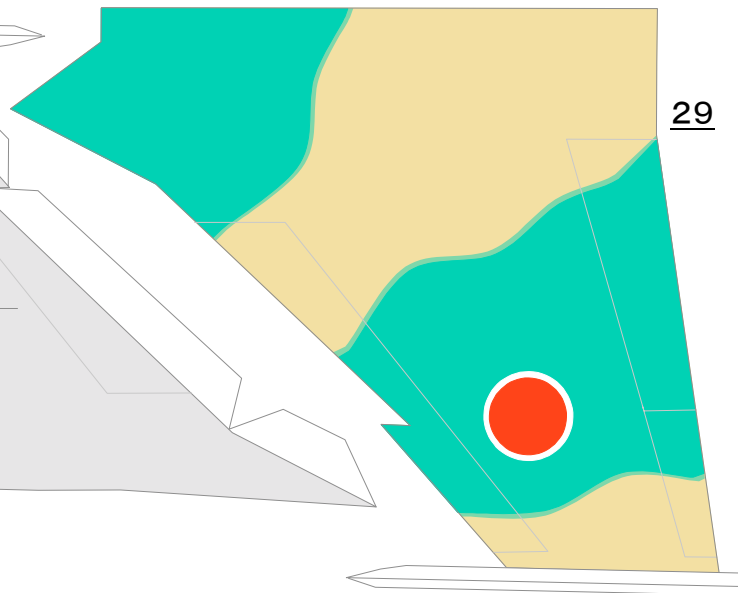
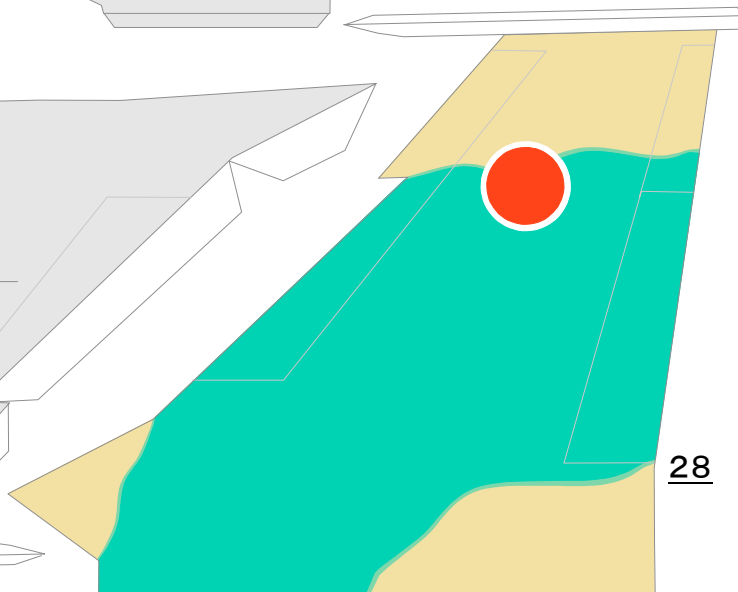
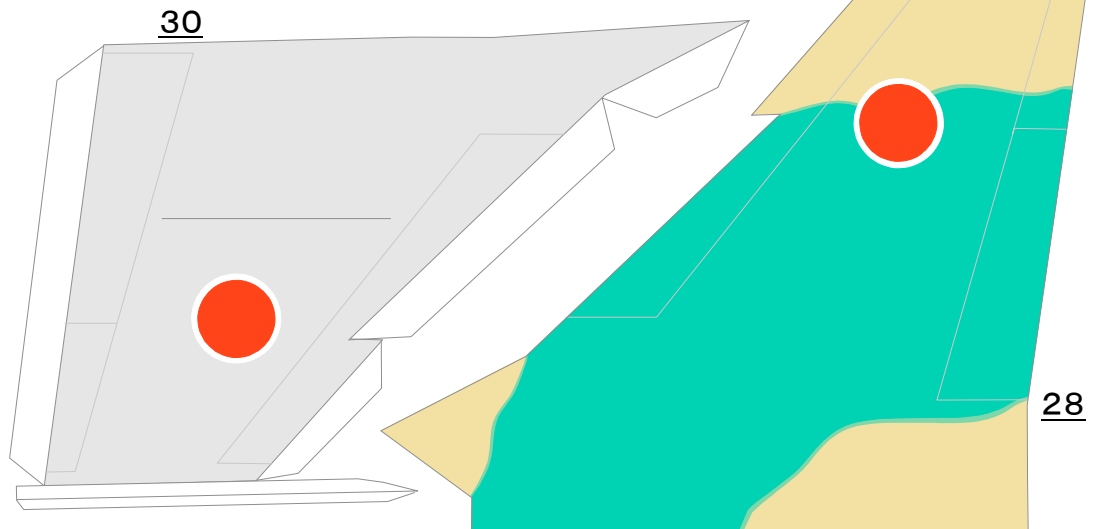
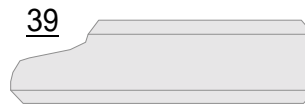
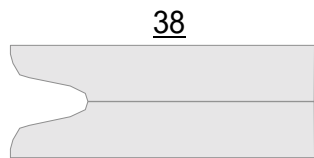
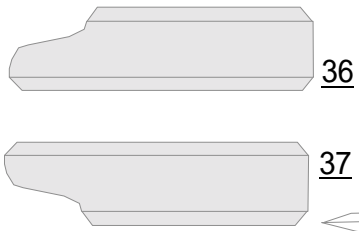
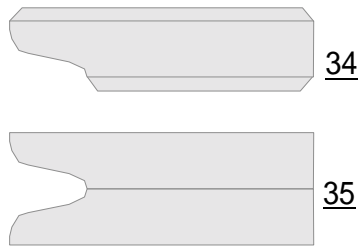


24

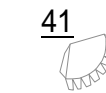


33

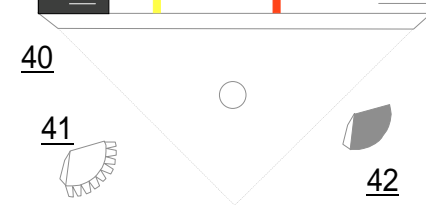
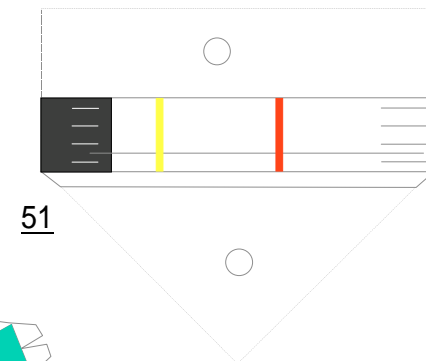
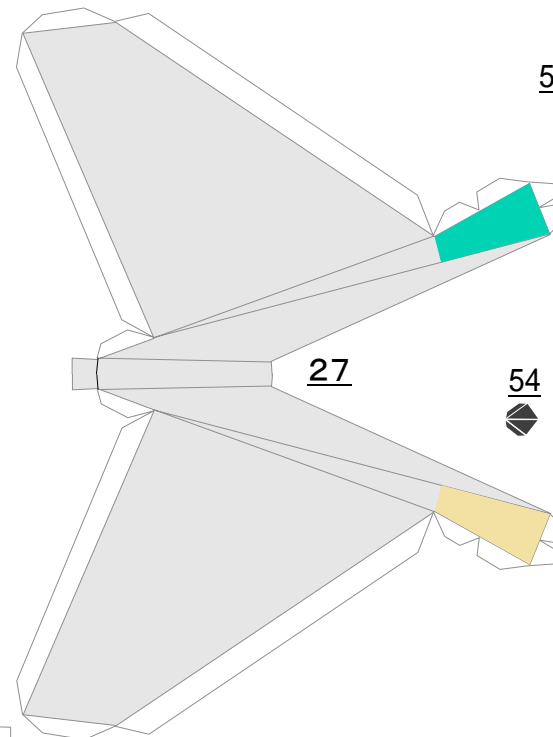


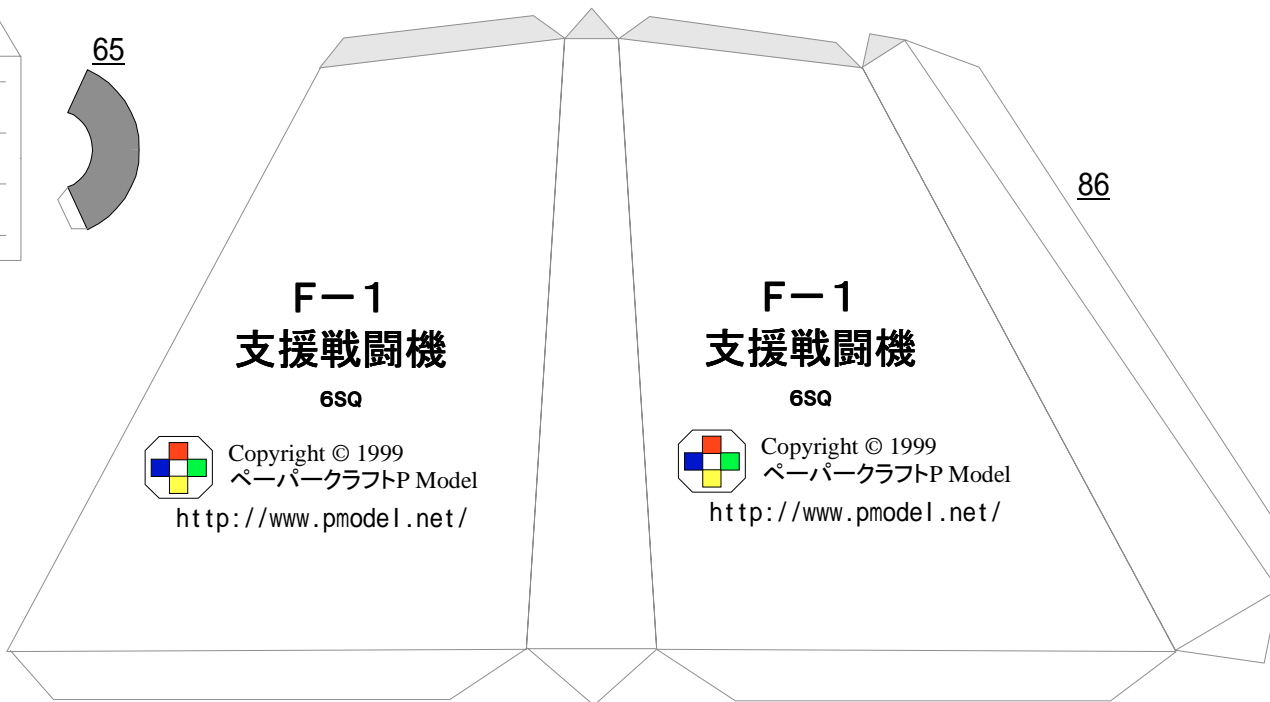
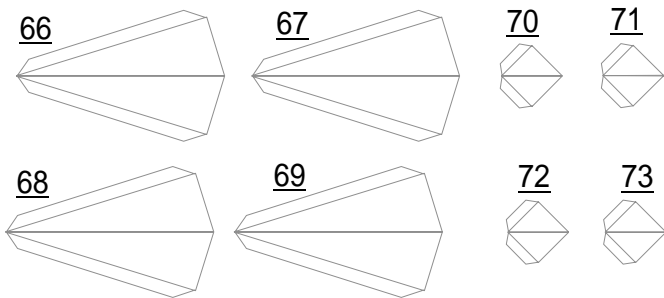


40



51





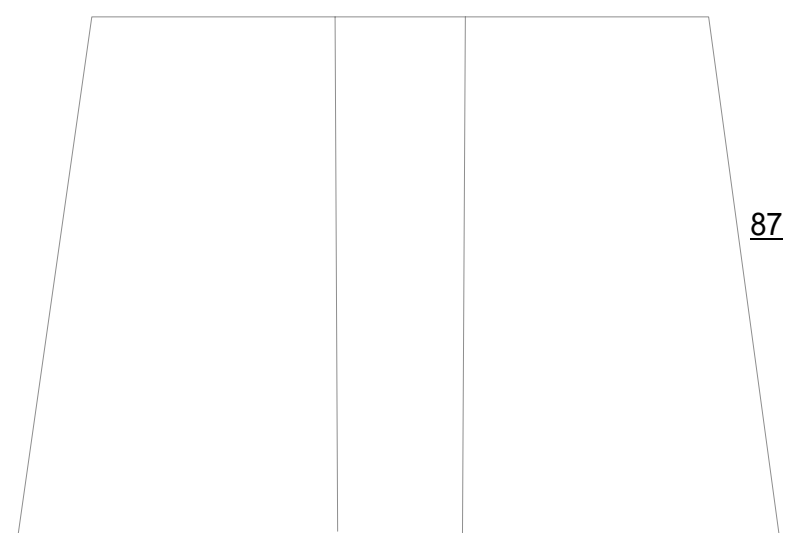
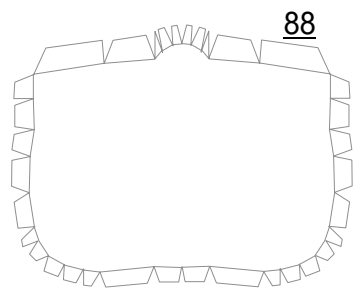
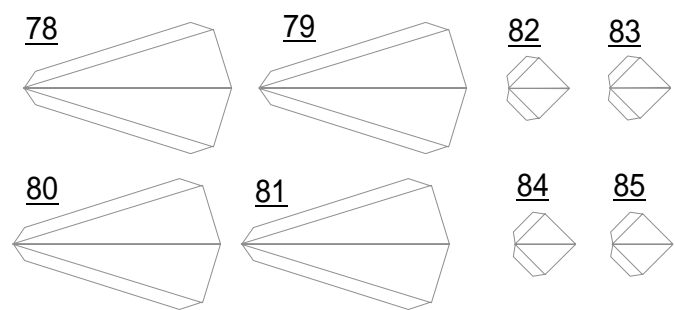
86

F-1
支援戦闘機
6SQ

Copyright © 1999
ペーパークラフトP Model
<http://www.pmodel.net/>

F-1
支援戦闘機
6SQ

Copyright © 1999
ペーパークラフトP Model
<http://www.pmodel.net/>



87

