

CARTA DE APROXIMACIÓN
POR INSTRUMENTOS-OACI

ELEV AD
78

APP 124.30
TWR 118.30
GMC 121.70

GRAN CANARIA
VOR/DME-ILS/DME RWY 03L
DESPLAZAMIENTO LATERAL RWY 03R

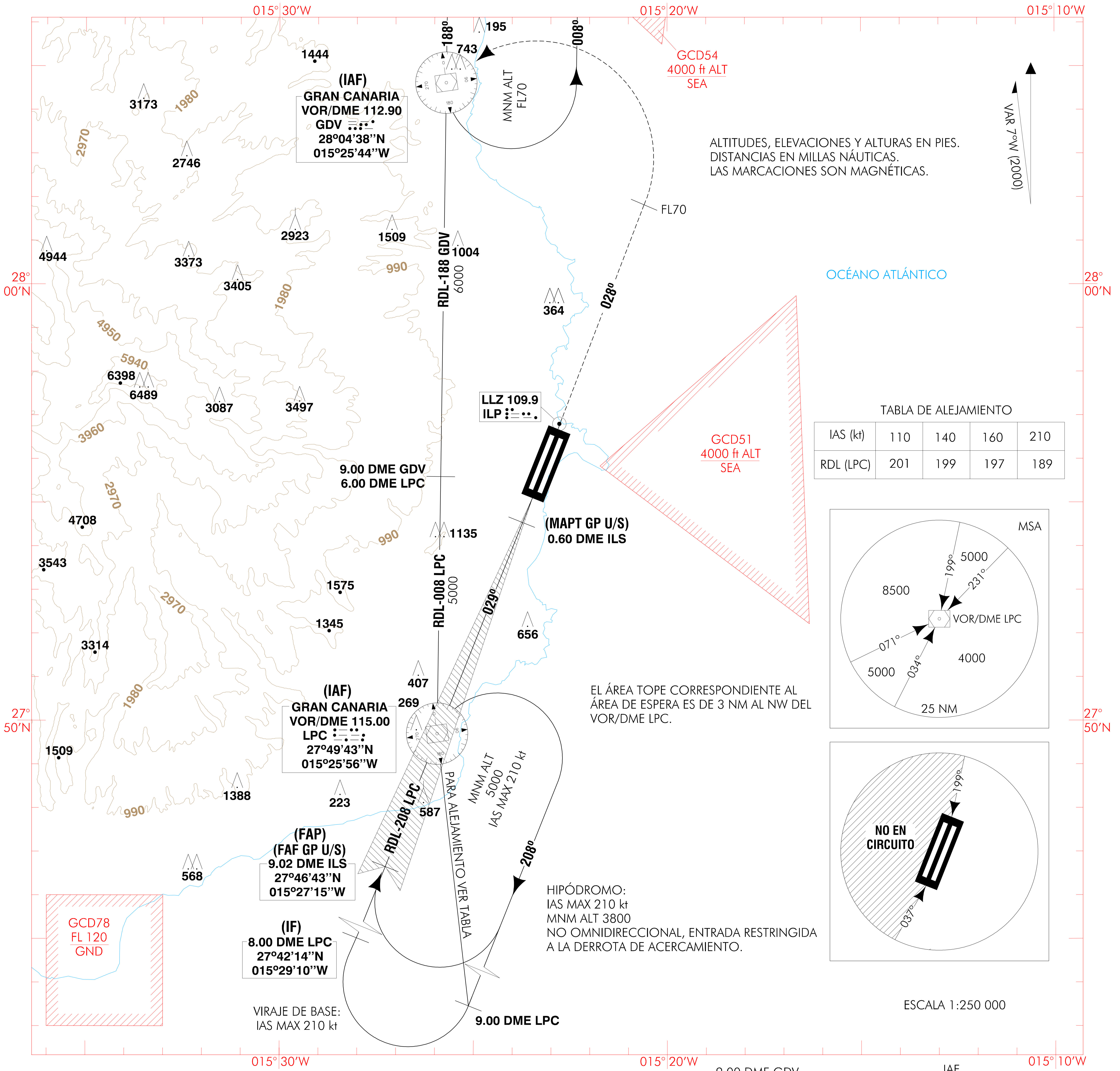
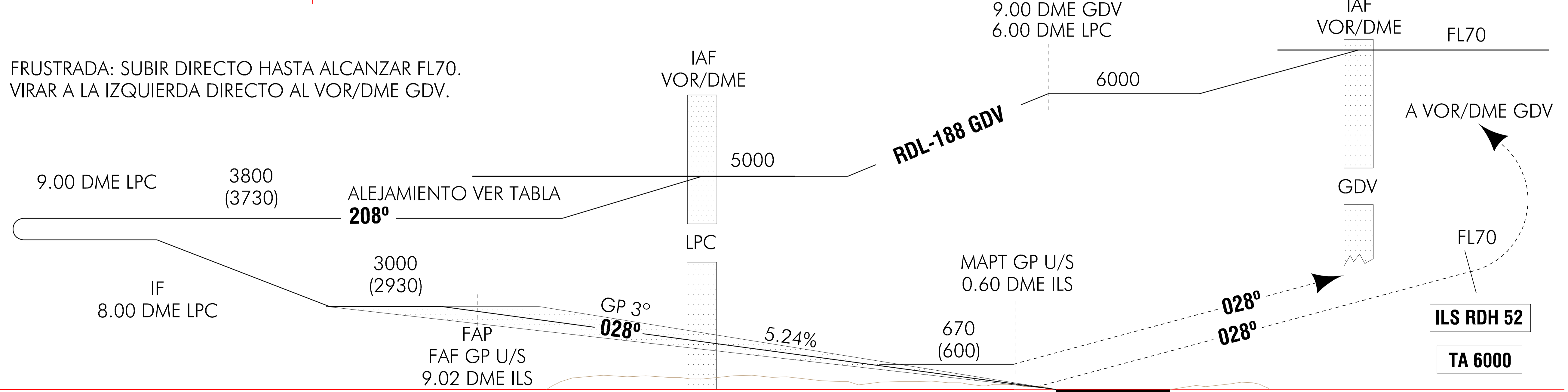
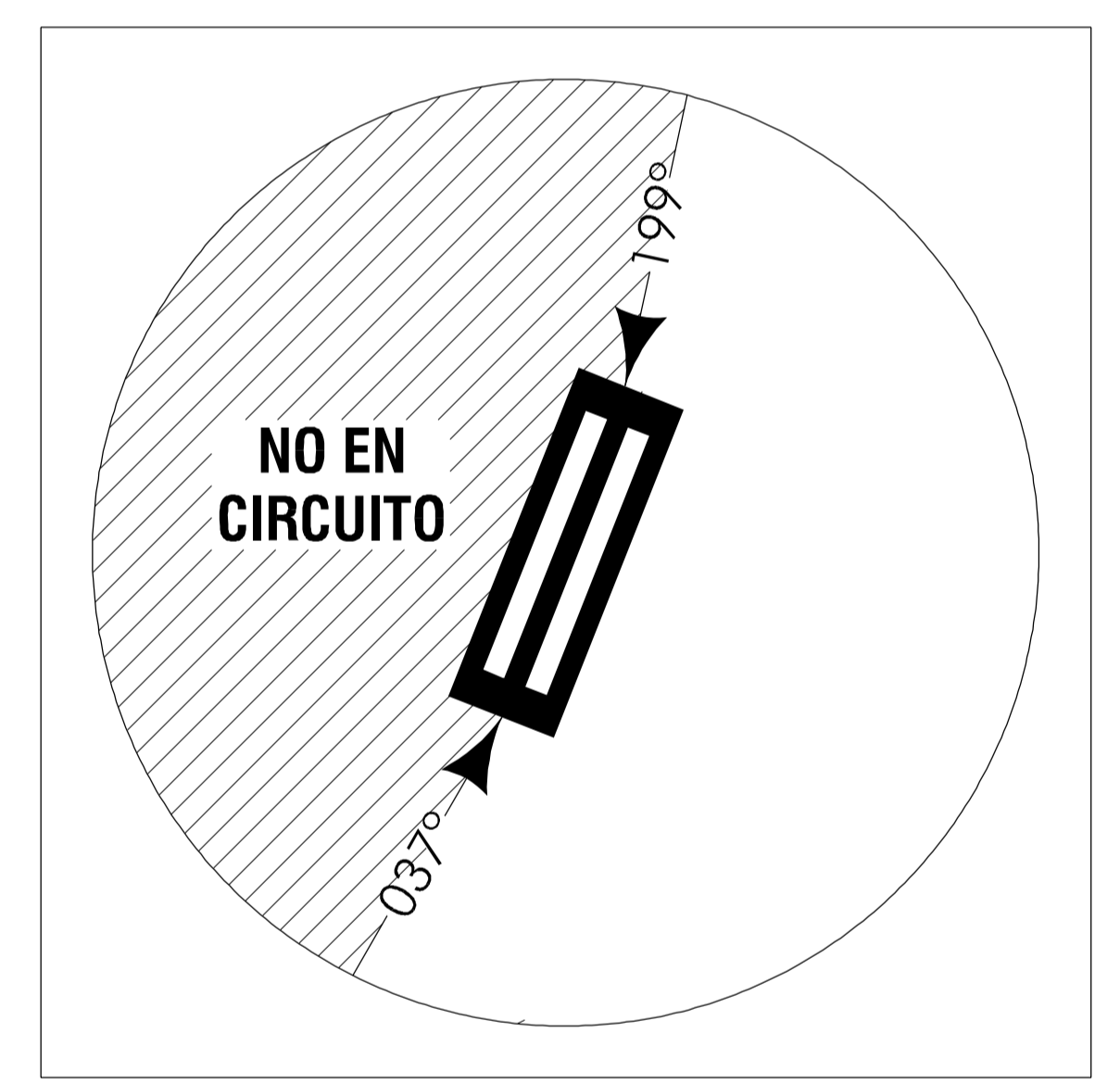
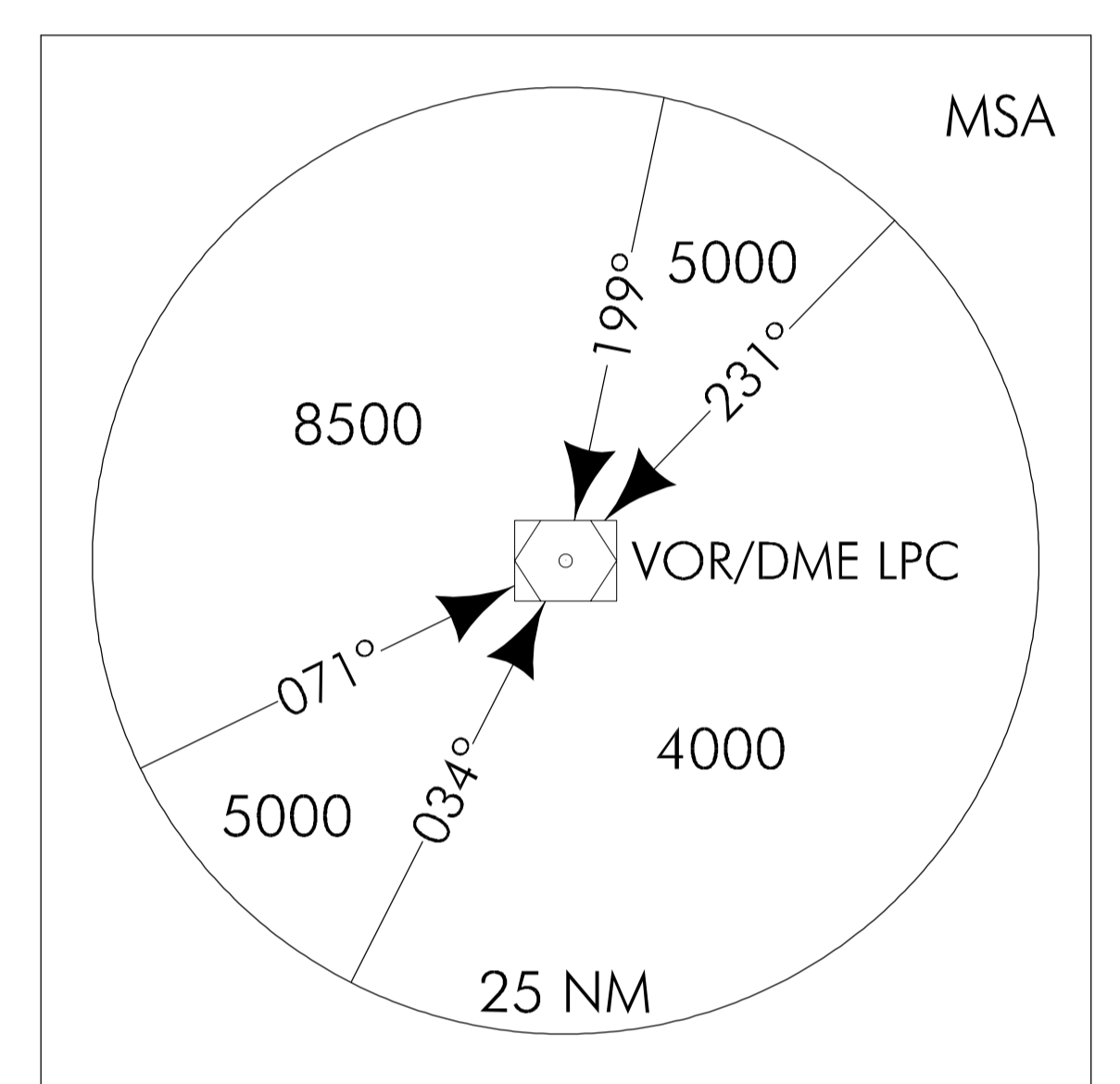


TABLA DE ALEJAMIENTO

IAS (kt)	110	140	160	210
RDL (LPC)	201	199	197	189



ELEV:78

THR RWY 03L

HGT REF ELEV THR RWY 03L

OCA/H	A	B	C	D
CAT I	320 (242)	330 (252)	340 (262)	350 (272)
GP U/S	670 (600)			
Side step RWY 03R	670 (600)			
En circuito (H) sobre 78	980 (910)	980 (910)	1150 (1080)	1150 (1080)

GS	kt	80	100	120	140	160	180					
FAP-THR: 9.01 NM	min:s	6:46	5:25	4:30	3:52	3:23	3:00					
FAF-MAPT: 8.42 NM	min:s	6:19	5:03	4:13	3:37	3:09	2:48					
ROD: 5.24%	ft/min	425	531	637	743	849	955					
ALT/HGT DME (ILS) FNA GP U/S												
13 DME	12 DME	11 DME	10 DME	9 DME	8 DME	7 DME	6 DME	5 DME	4 DME	3 DME	2 DME	1 DME
				3000 (2930)	2690 (2620)	2370 (2300)	2050 (1980)	1730 (1660)	1410 (1340)	1090 (1020)	780 (710)	

CAMBIOS: ELEV, DECLINACIÓN MAGNÉTICA

17-NOV-00 (AMDT 61/00)

AIP-ESPAÑA

AD 2-GCLP IAC/2