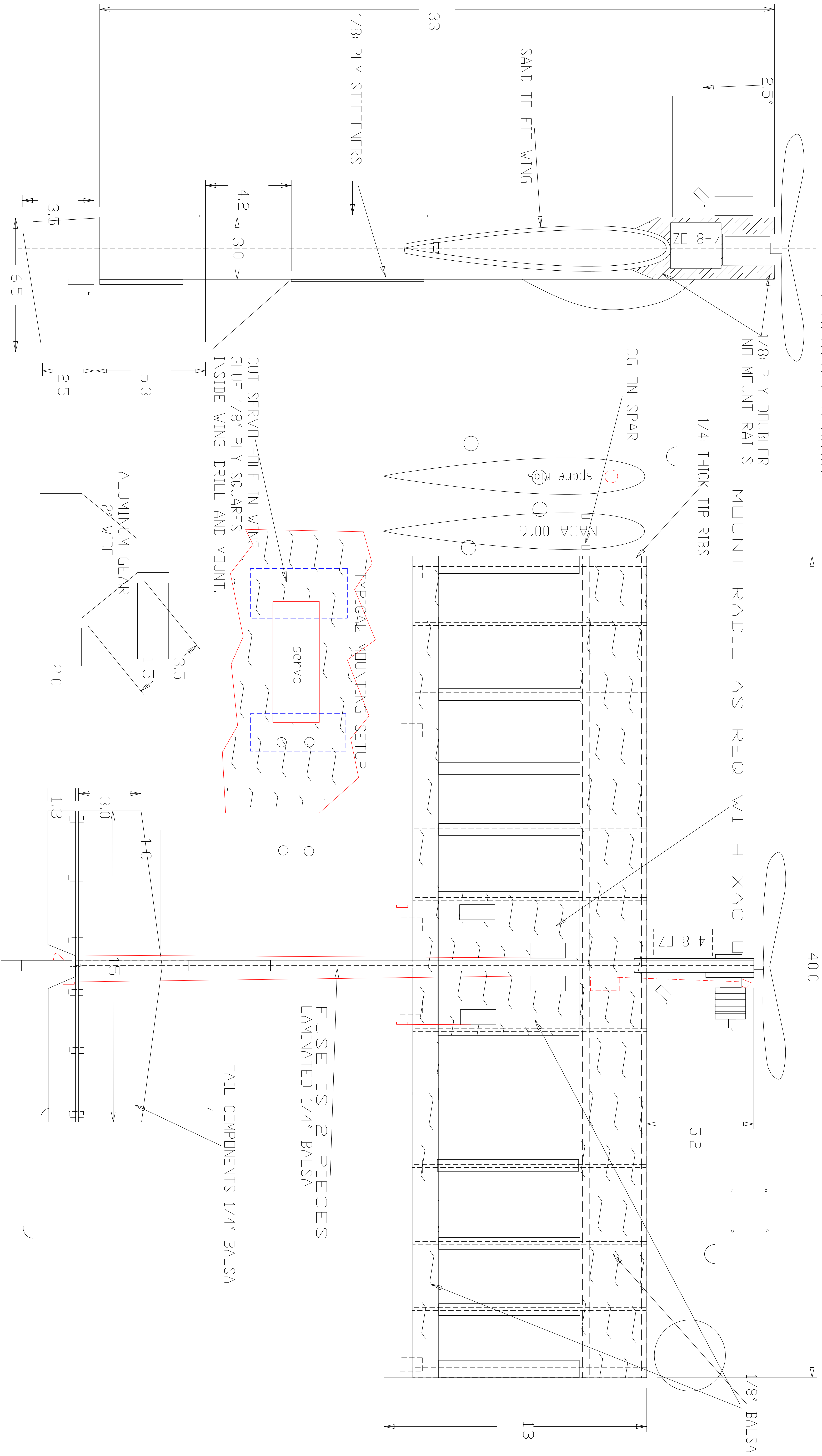


"PIT BULL"
 BY ANDY MCNEW 9 MARCH, 2000
 .20-.45 SIZE FUN FLIER
 DATSMYPAL@YAHOO.COM



2.5"

1/8" PLY DOUBLER
 NO MOUNT RAILS

CG DN SPAR

1/4" THICK TIP RIBS

MOUNT RADIO AS REQ WITH XACTO

4-8 OZ

5.2

1/8" Balsa

33

SAND TO FIT WING

1/8" PLY STIFFENERS

4.2

3.0

CUT SERVO HOLE IN WING
 GLUE 1/8" PLY SQUARES
 INSIDE WING. DRILL AND MOUNT.

TYPICAL MOUNTING SETUP

servo

ALUMINUM GEAR
 2" WIDE

2.0

1.0

3.0

1.5

1.3

FUSE IS 2 PIECES
 LAMINATED 1/4" Balsa

TAIL COMPONENTS 1/4" Balsa

3.5

6.5

2.5

5.3

40.0

1.3