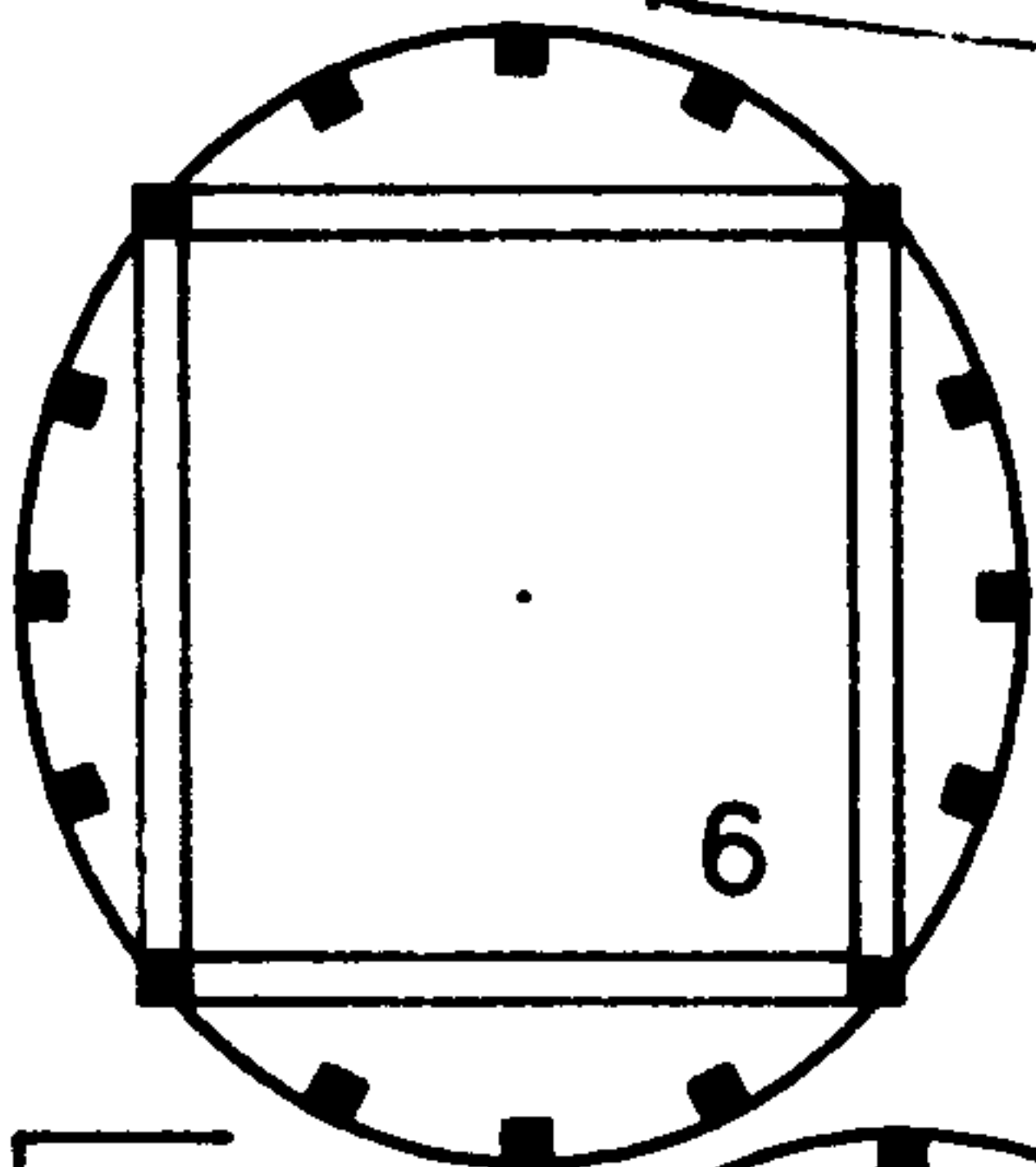
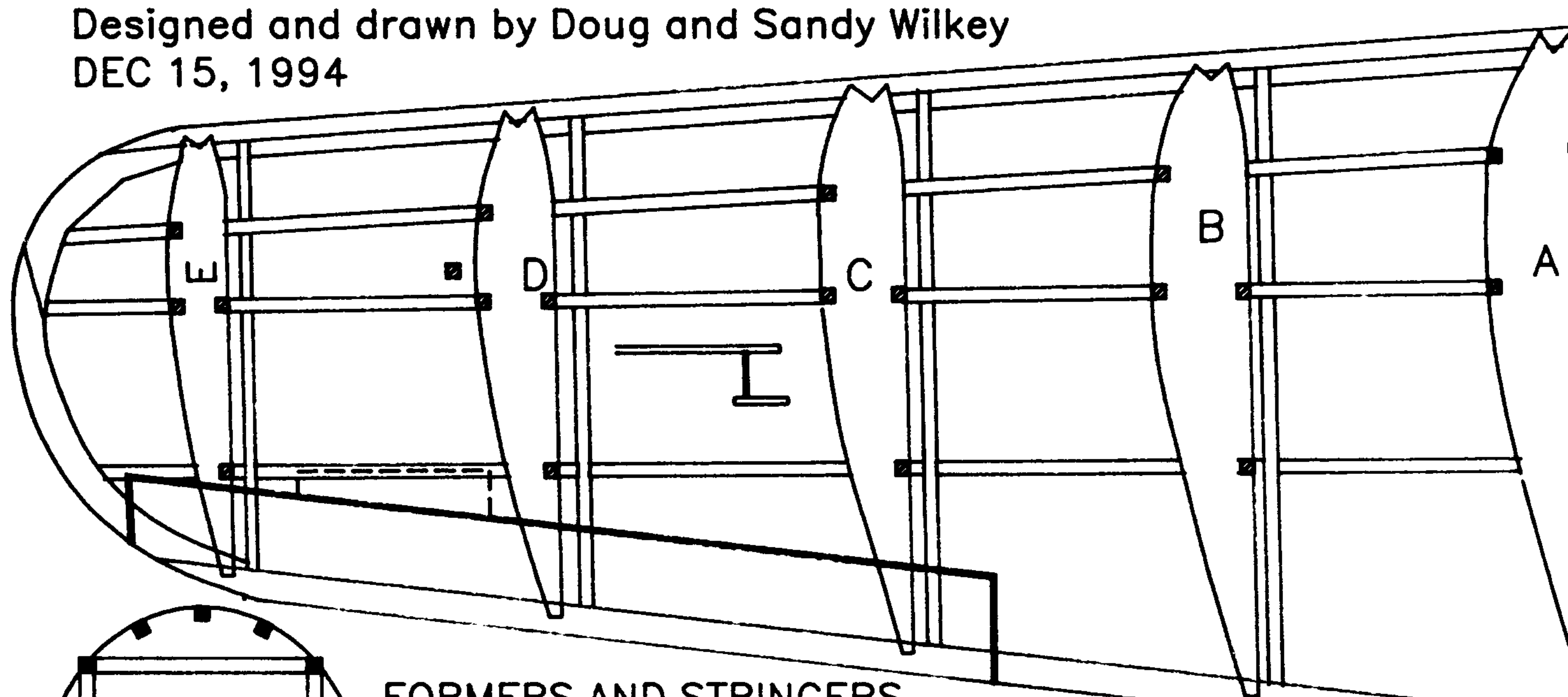
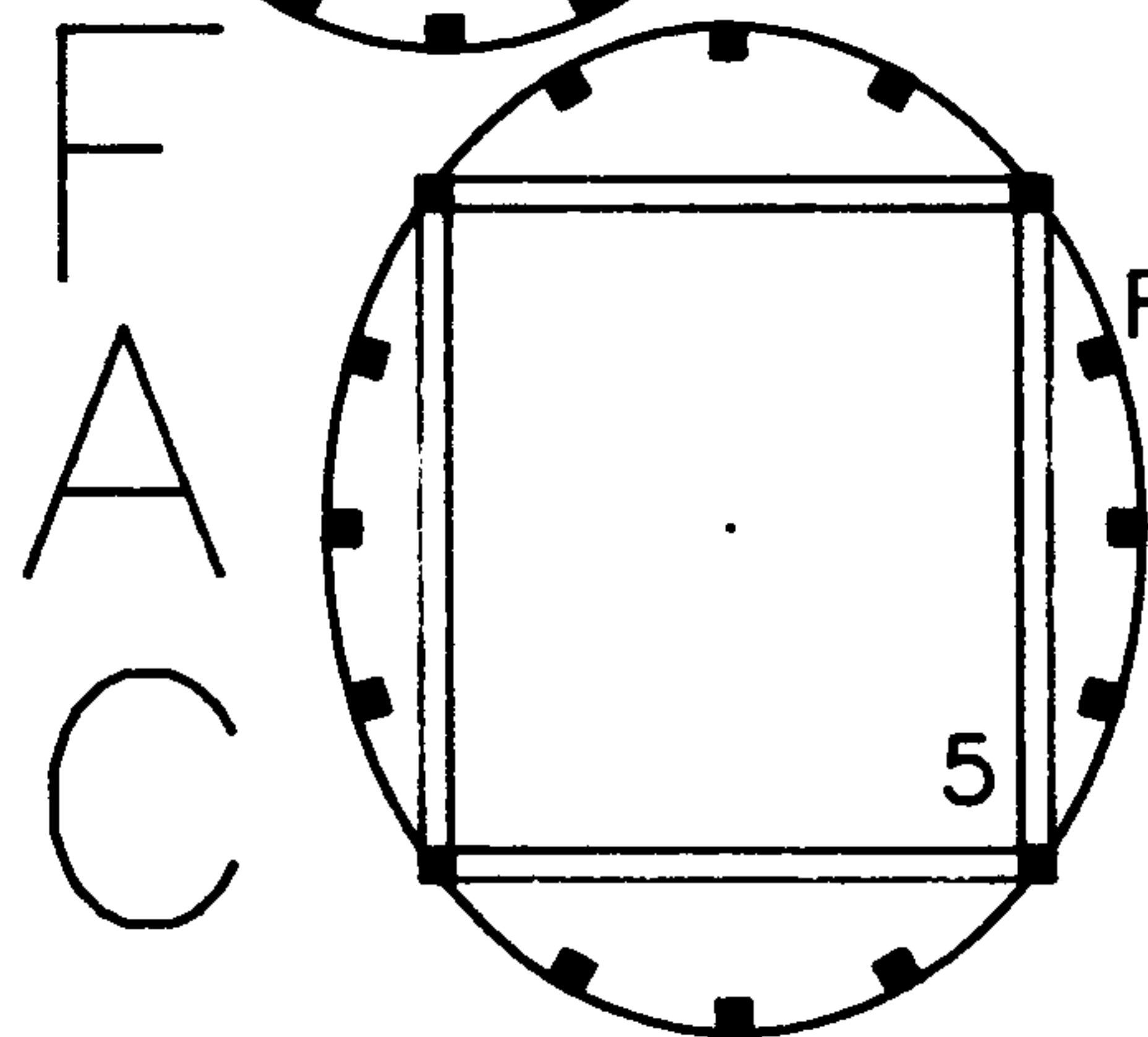


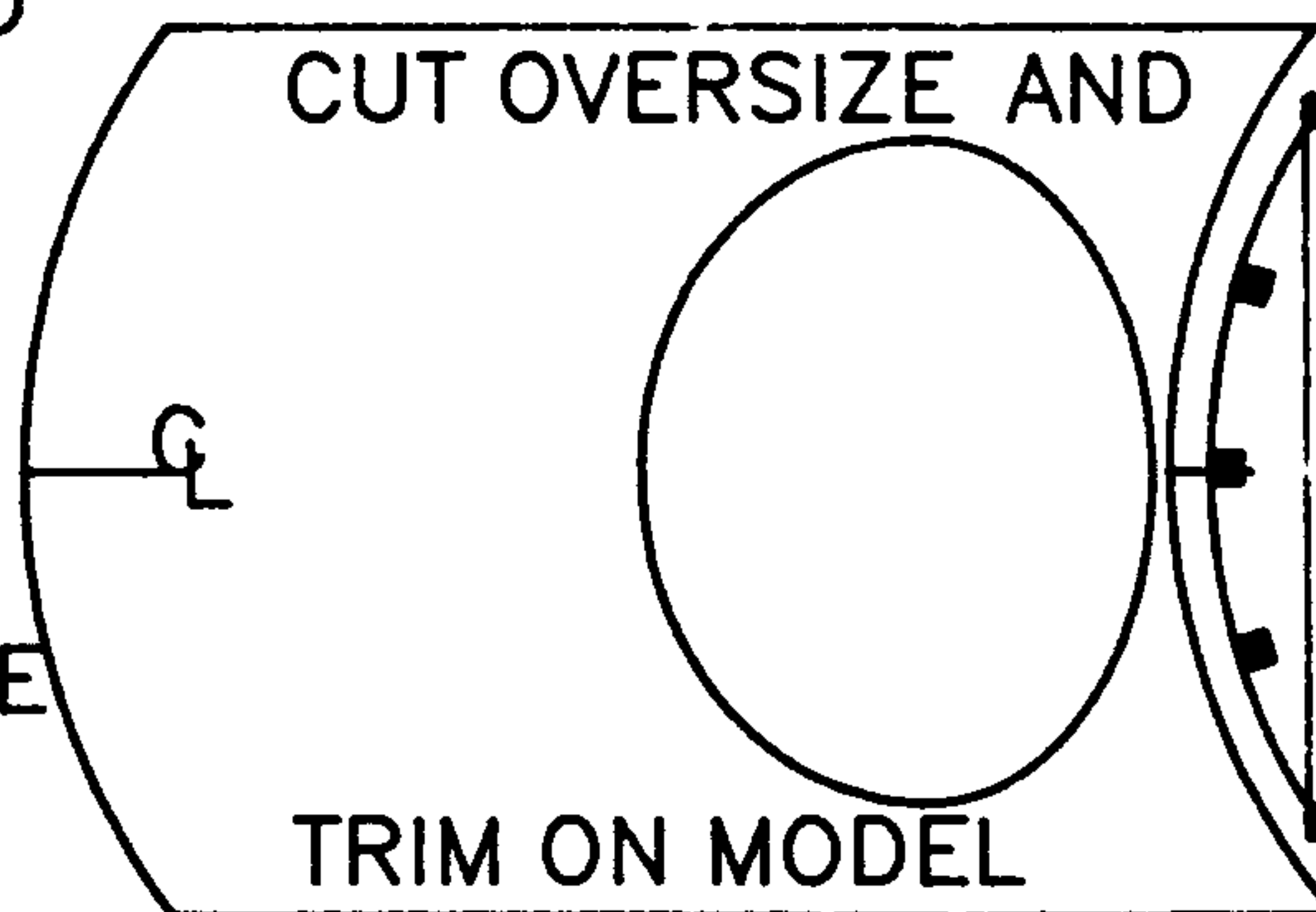
Designed and drawn by Doug and Sandy Wilkey
DEC 15, 1994



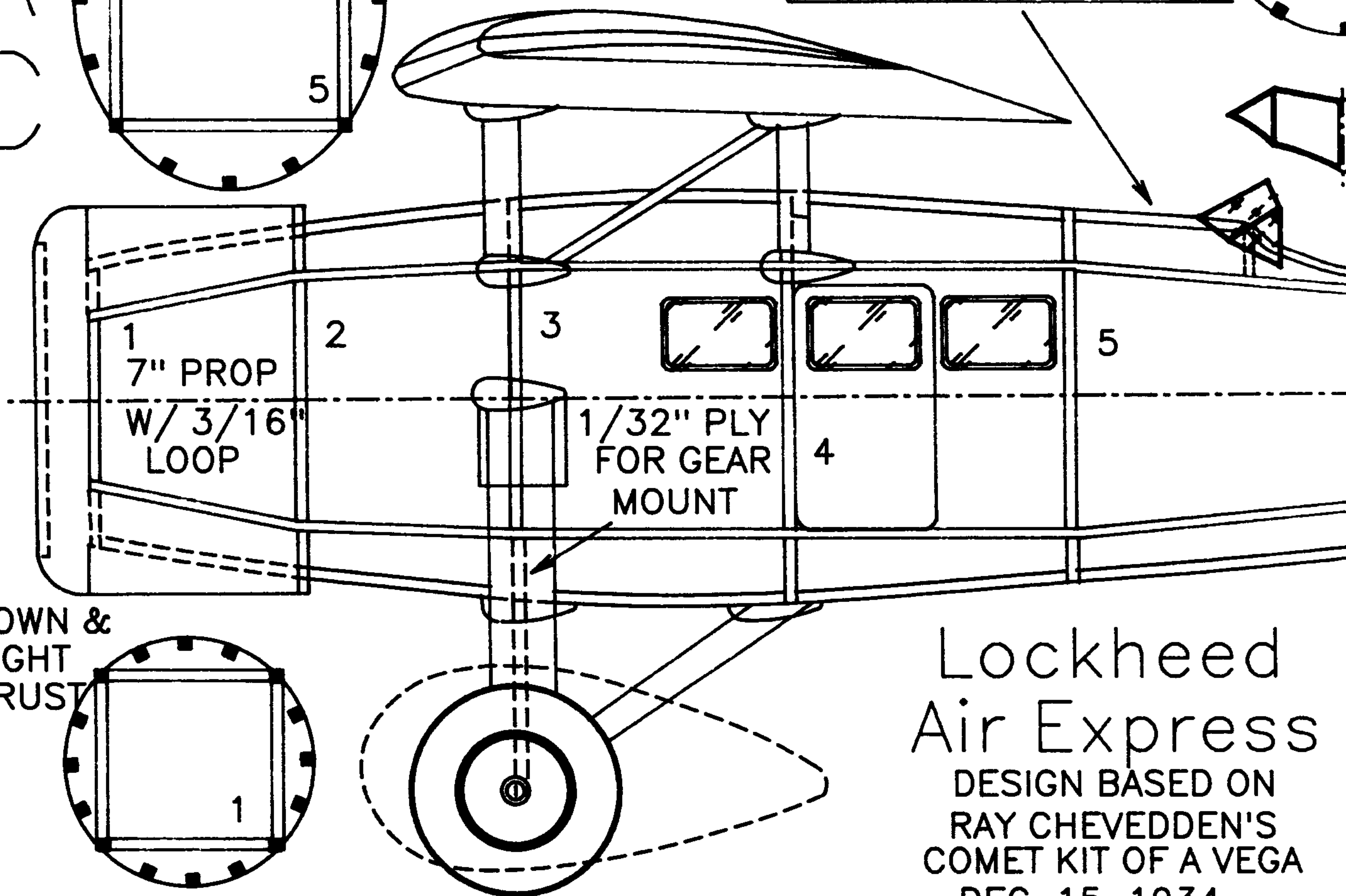
FORMERS AND STRINGERS
ARE 1/16" BOX FRAME
LONGERONS ARE SANDED
TO FORM STRINGERS
AFTER FORMERS ARE
ADDED TO BASIC FRAME



SEE REFERENCE
FOR COLOR SCHEME



STR
MOL
HE



Lockheed
Air Express
DESIGN BASED ON
RAY CHEVEDDEN'S
COMET KIT OF A VEGA
DEC. 15. 1934