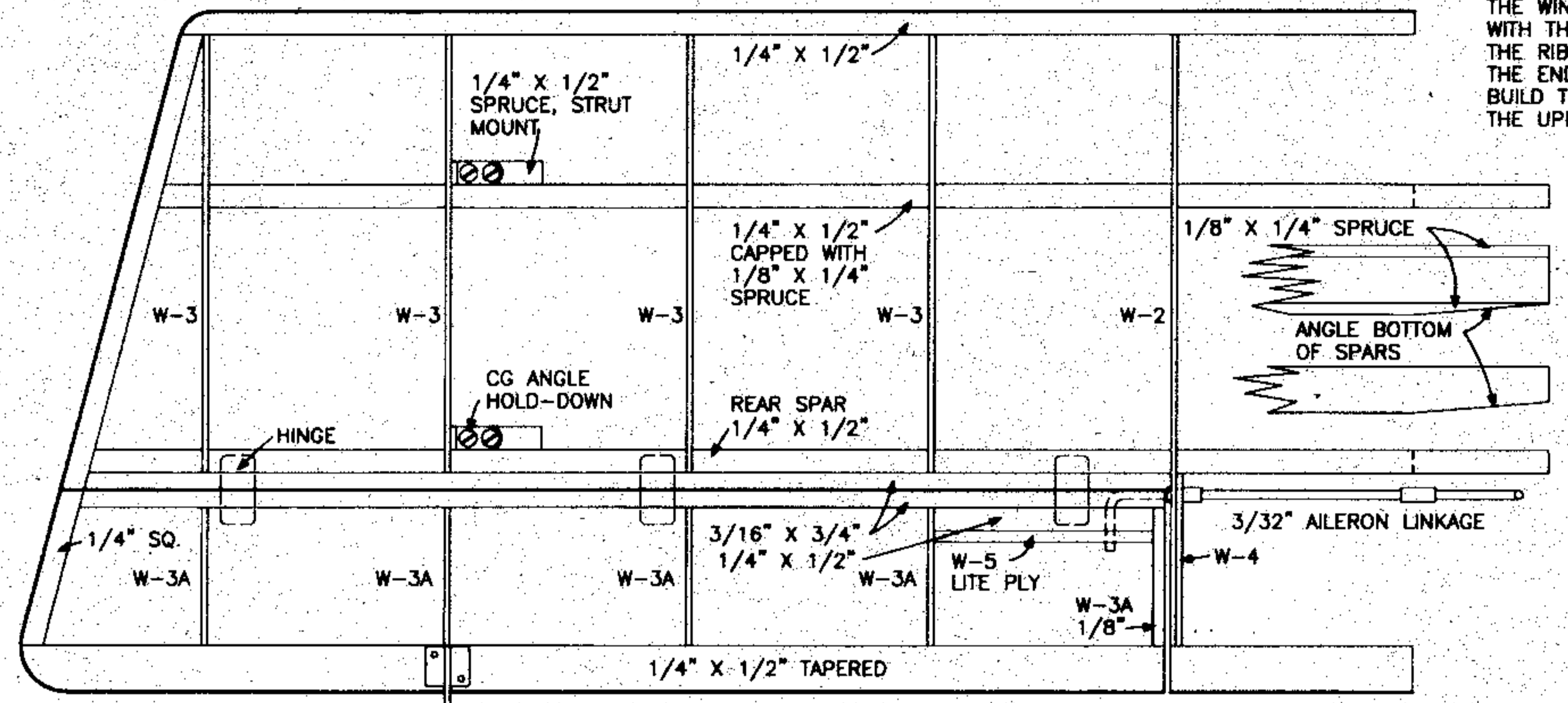
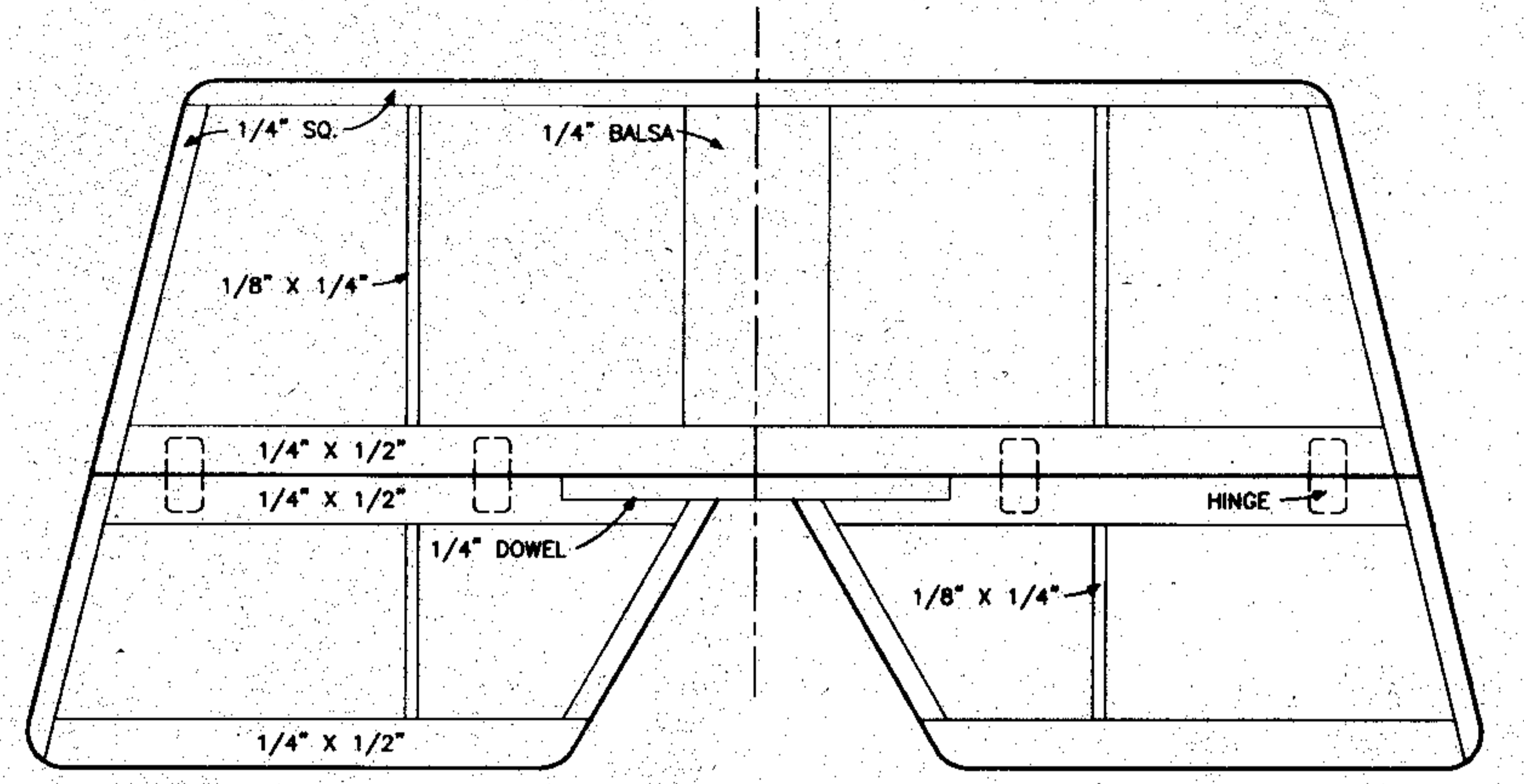
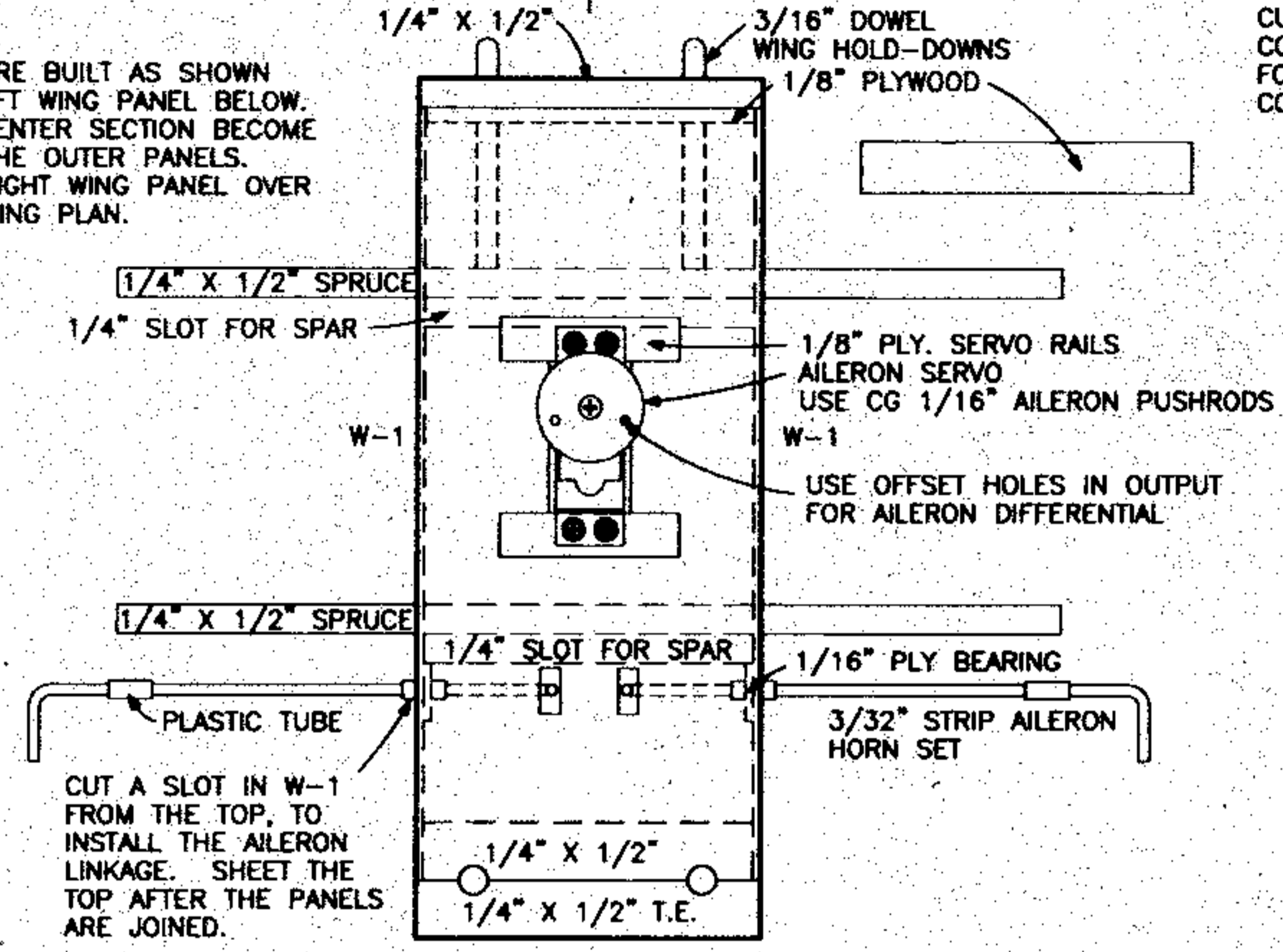


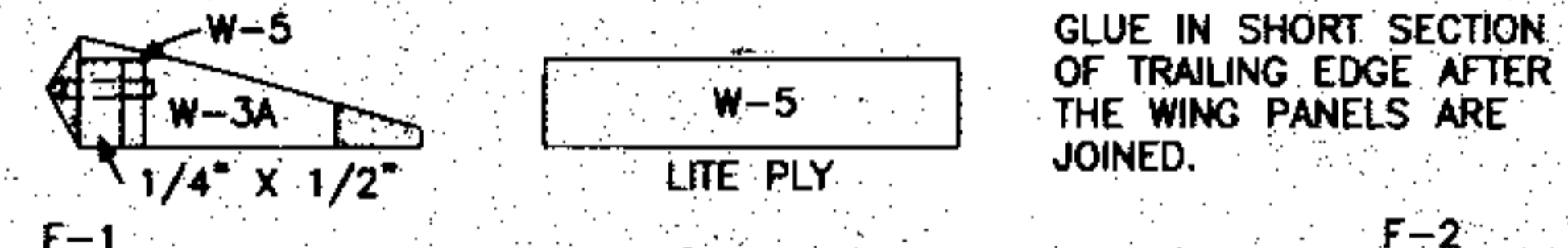
1-3/8" DIHEDRAL UNDER WING TIP, TOP WING



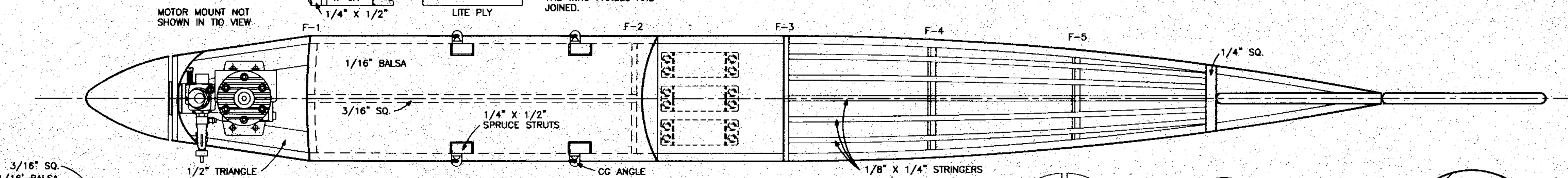
THE WING PANELS ARE BUILT AS SHOWN WITH THE LOWER LEFT WING PANEL BELOW. THE RIBS OF THE CENTER SECTION BECOME THE END RIBS OF THE OUTER PANELS. BUILD THE LOWER RIGHT WING PANEL OVER THE UPPER RIGHT WING PLAN.



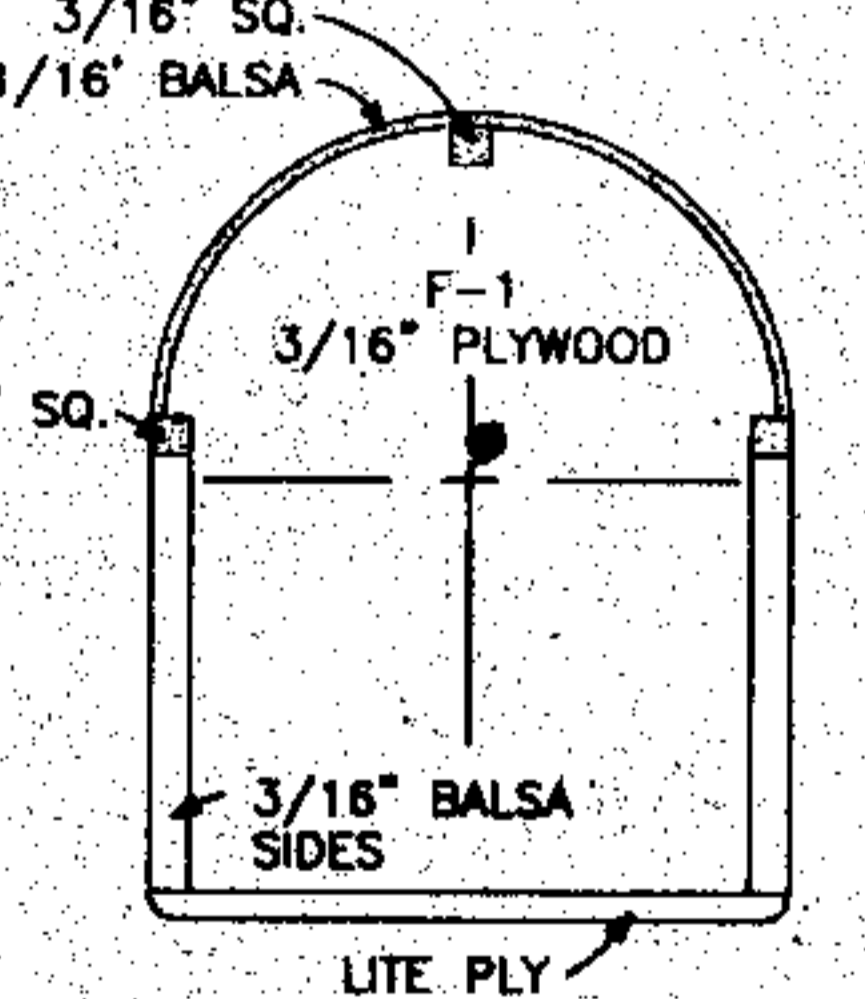
1" DIHEDRAL UNDER WING TIP, BOTTOM WING



GLUE IN SHORT SECTION OF TRAILING EDGE AFTER THE WING PANELS ARE JOINED.

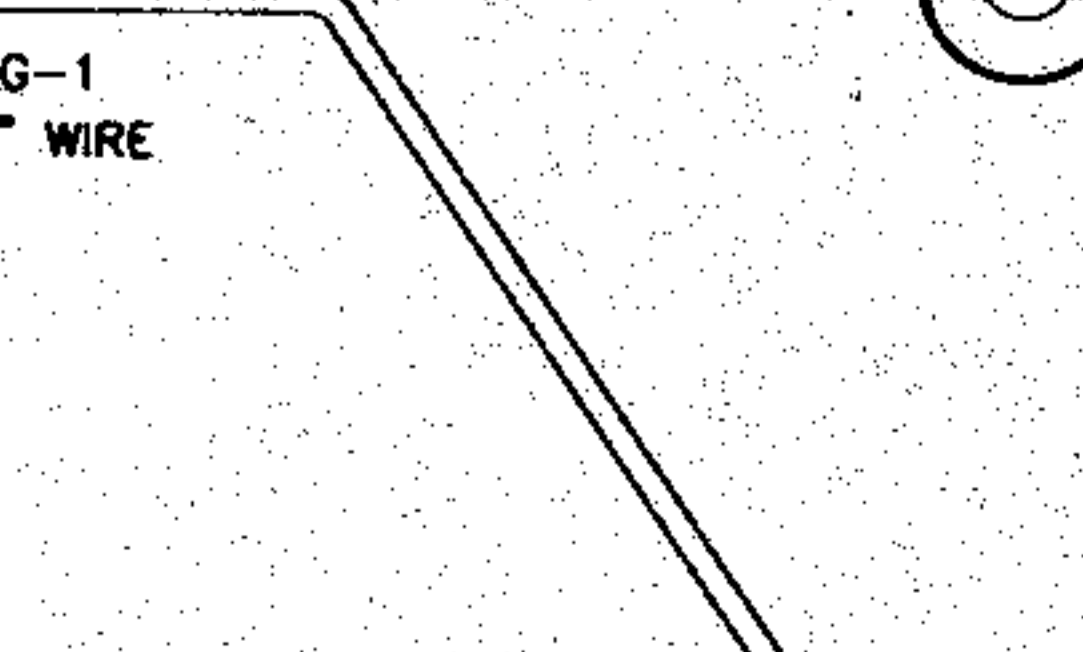
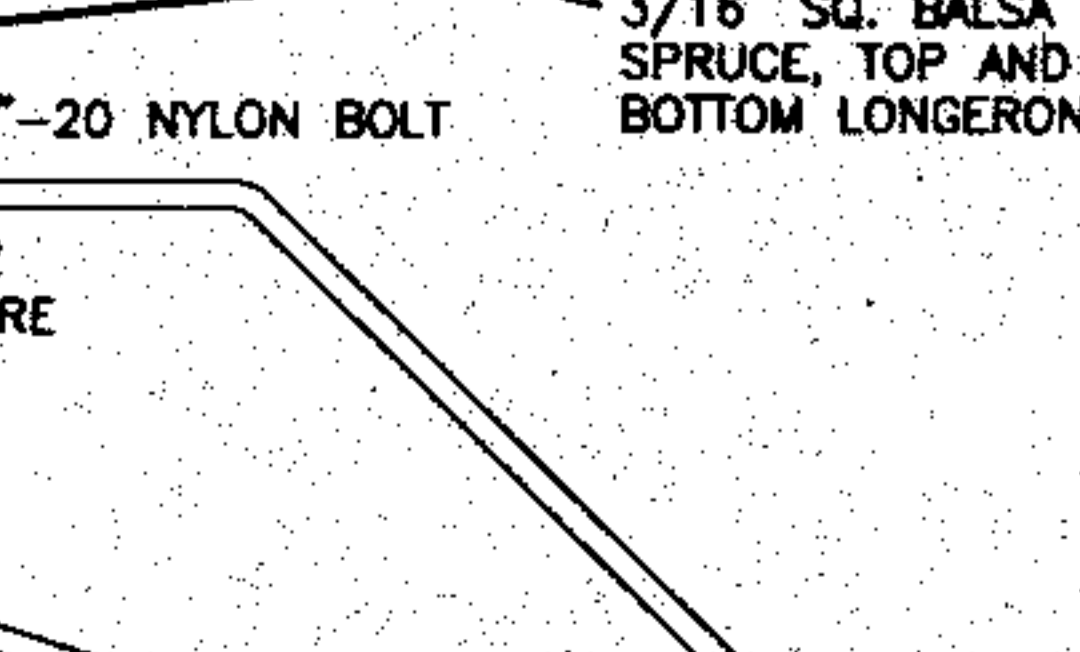
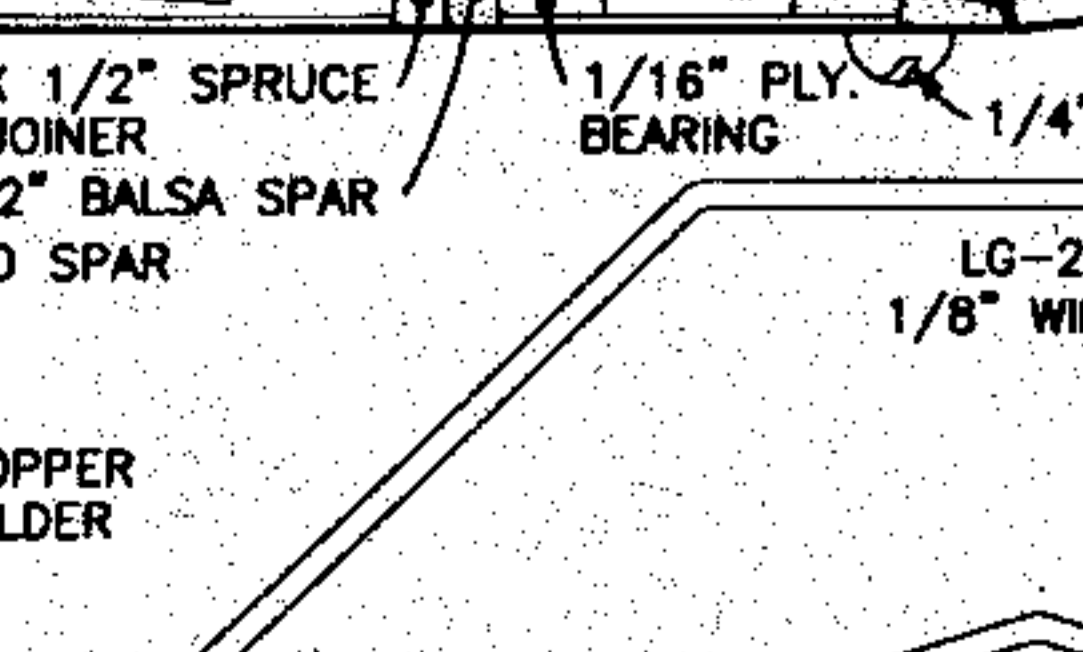
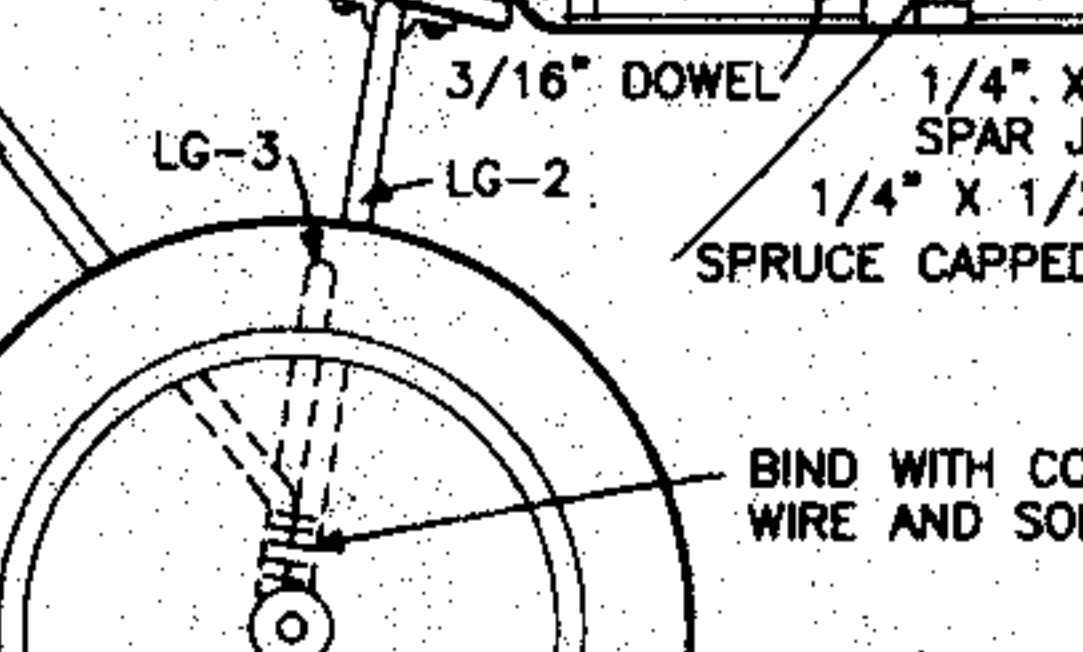
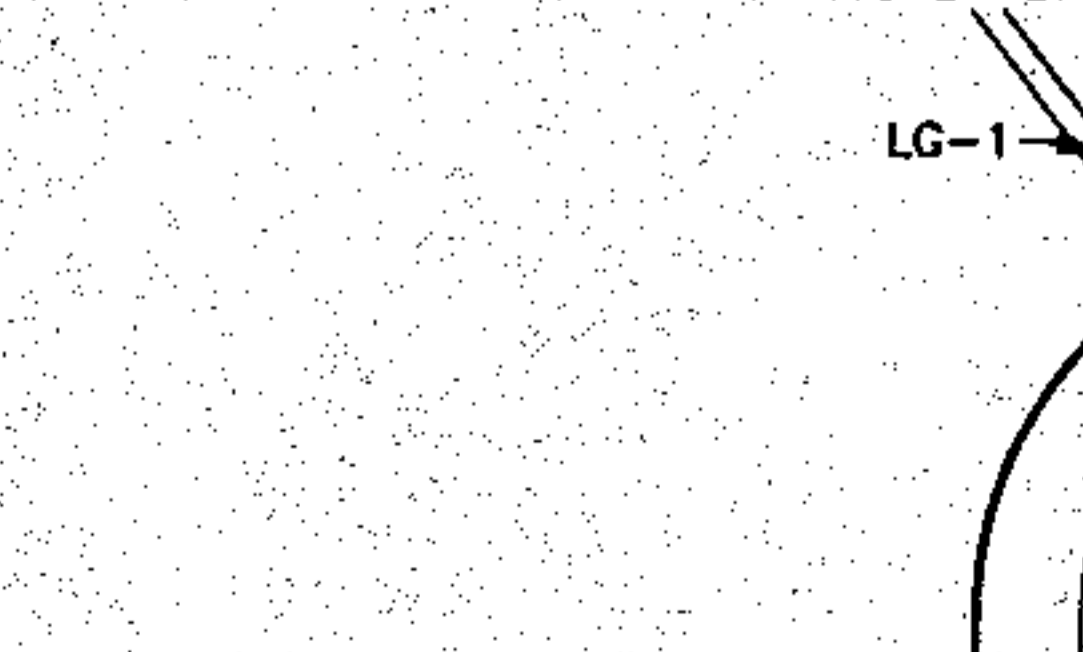
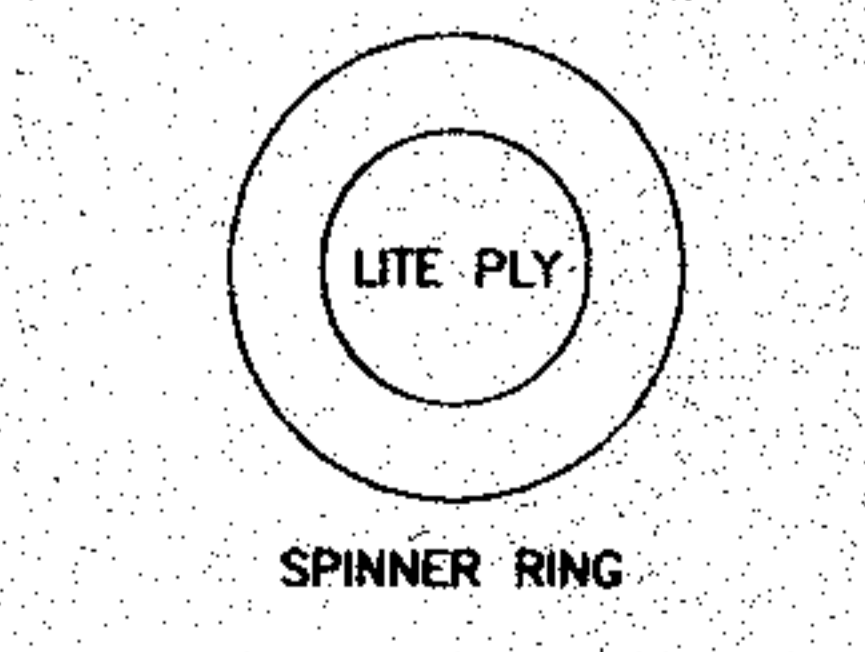
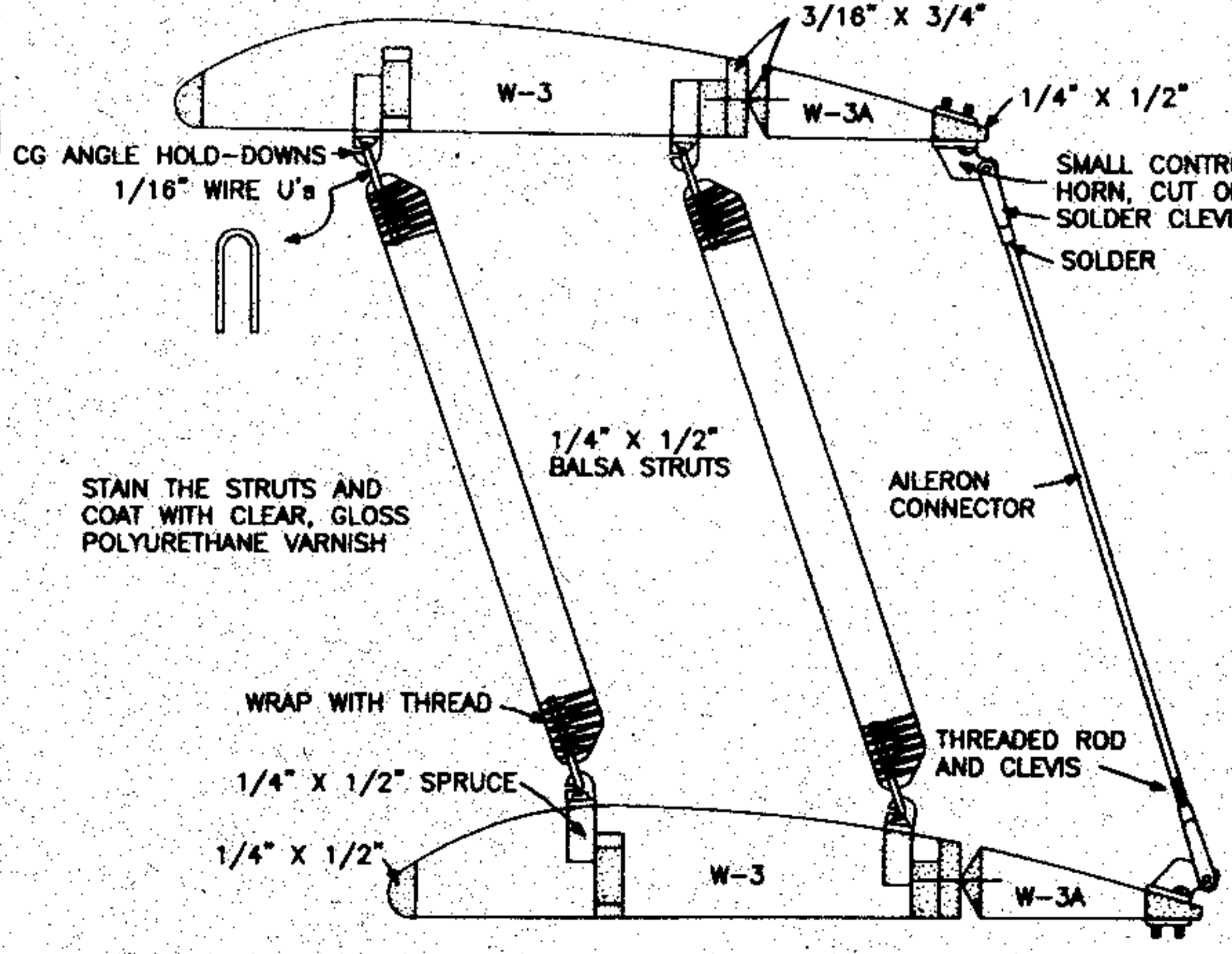
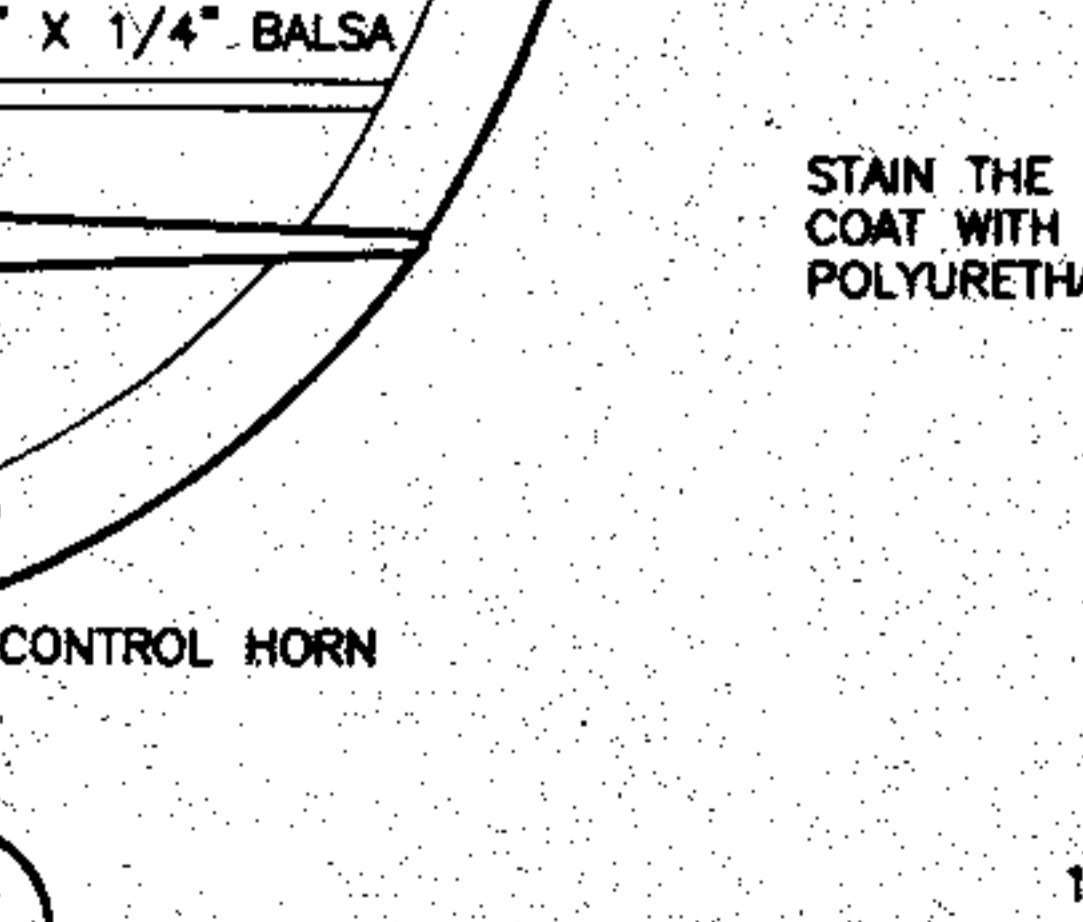
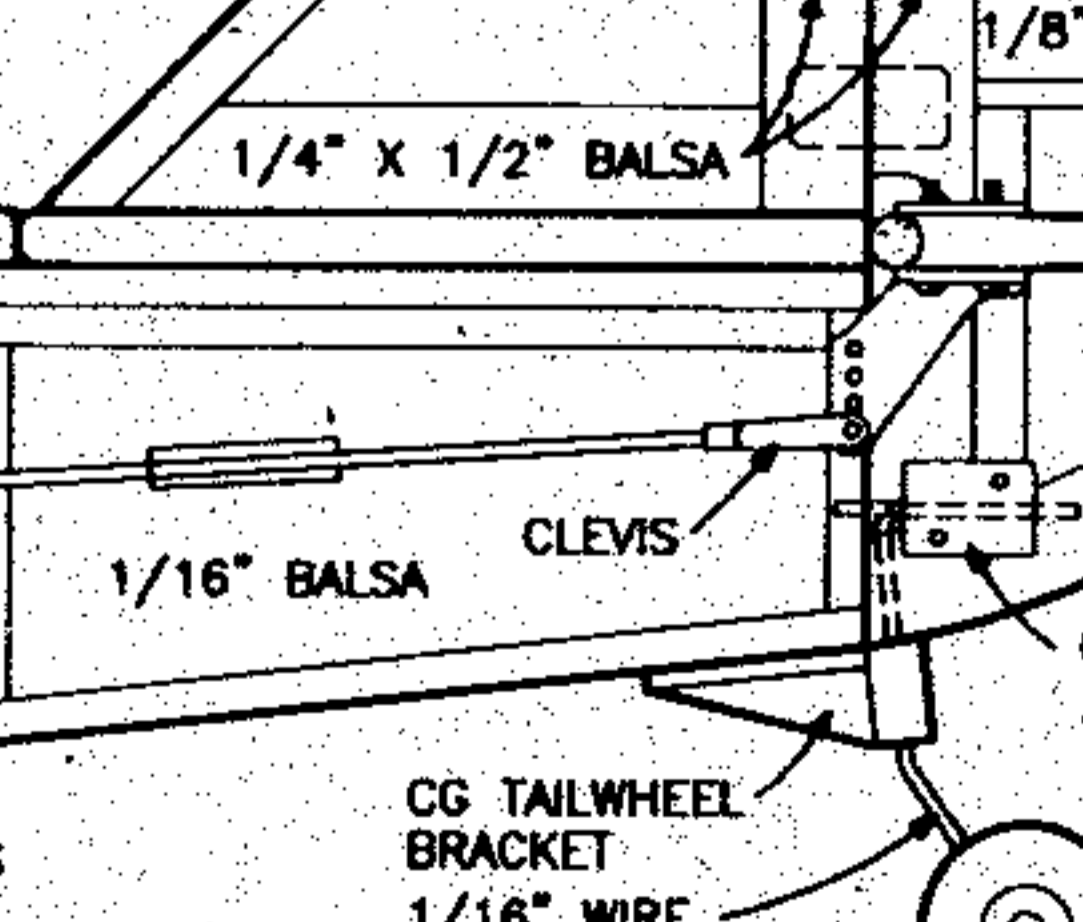
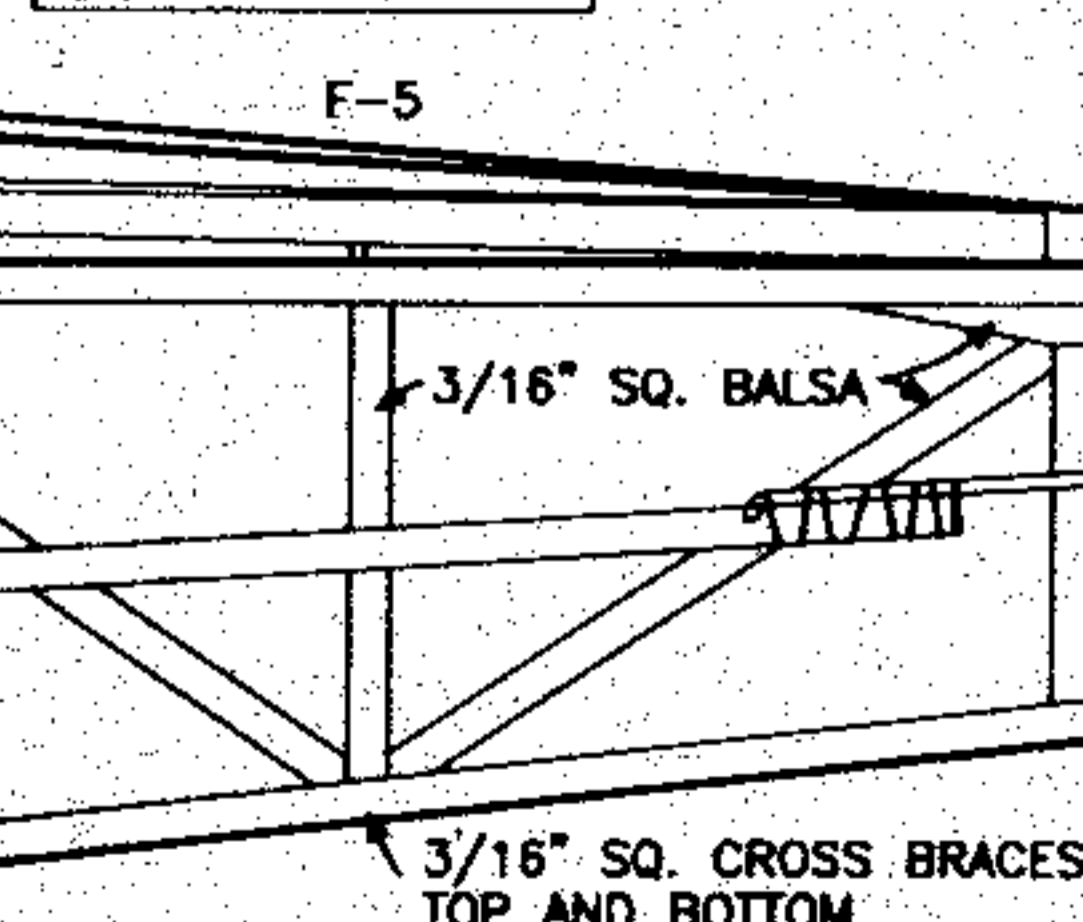
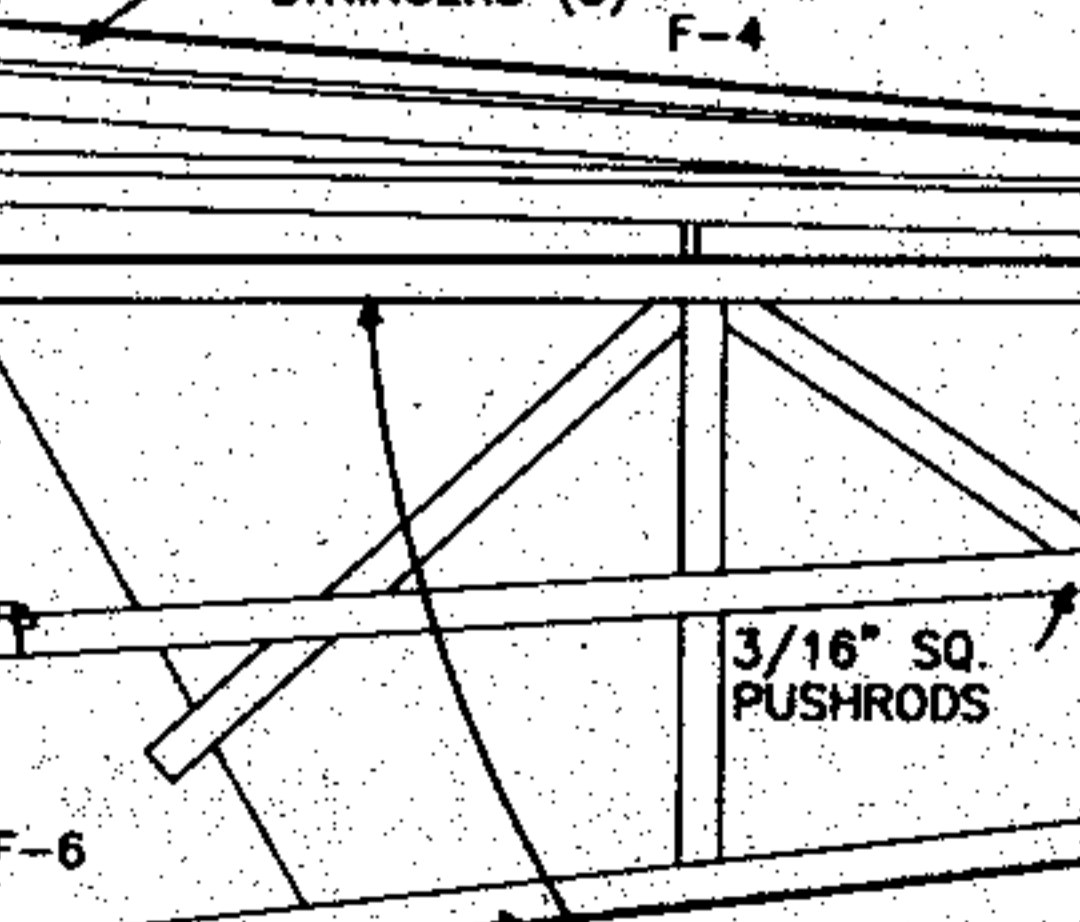
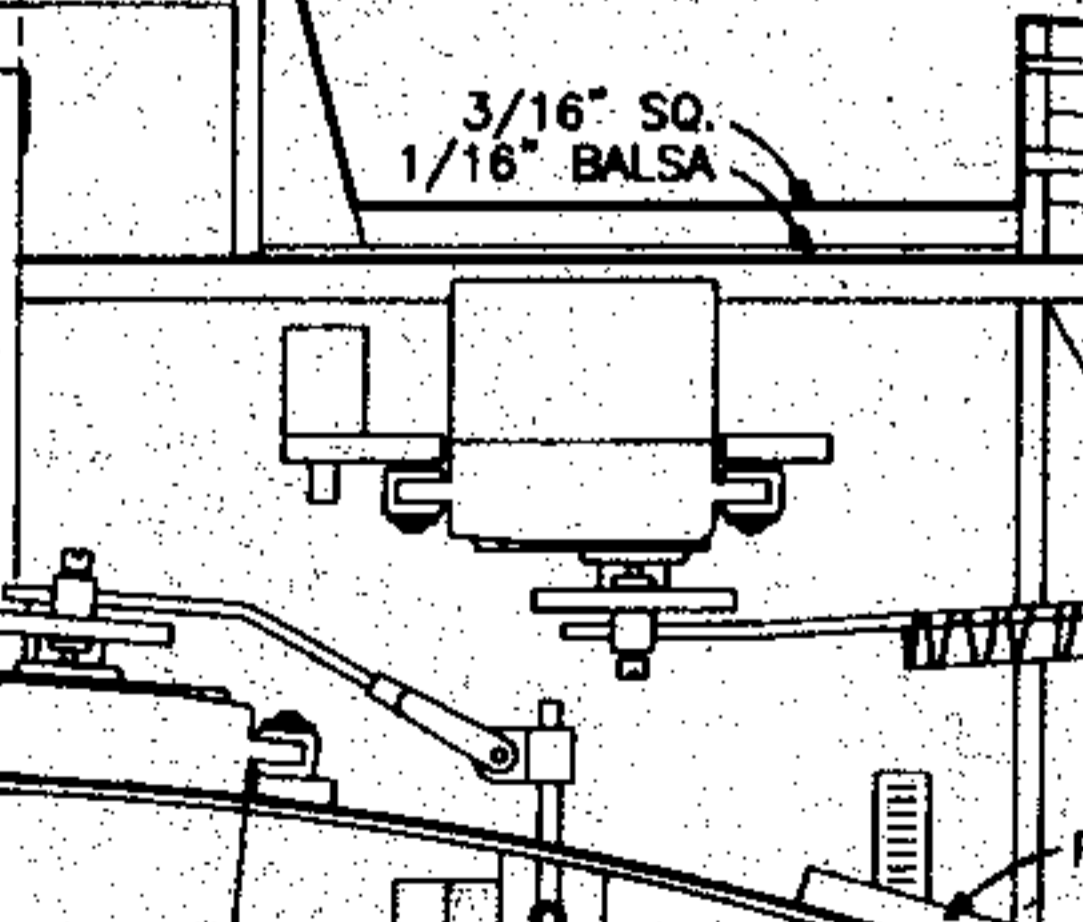
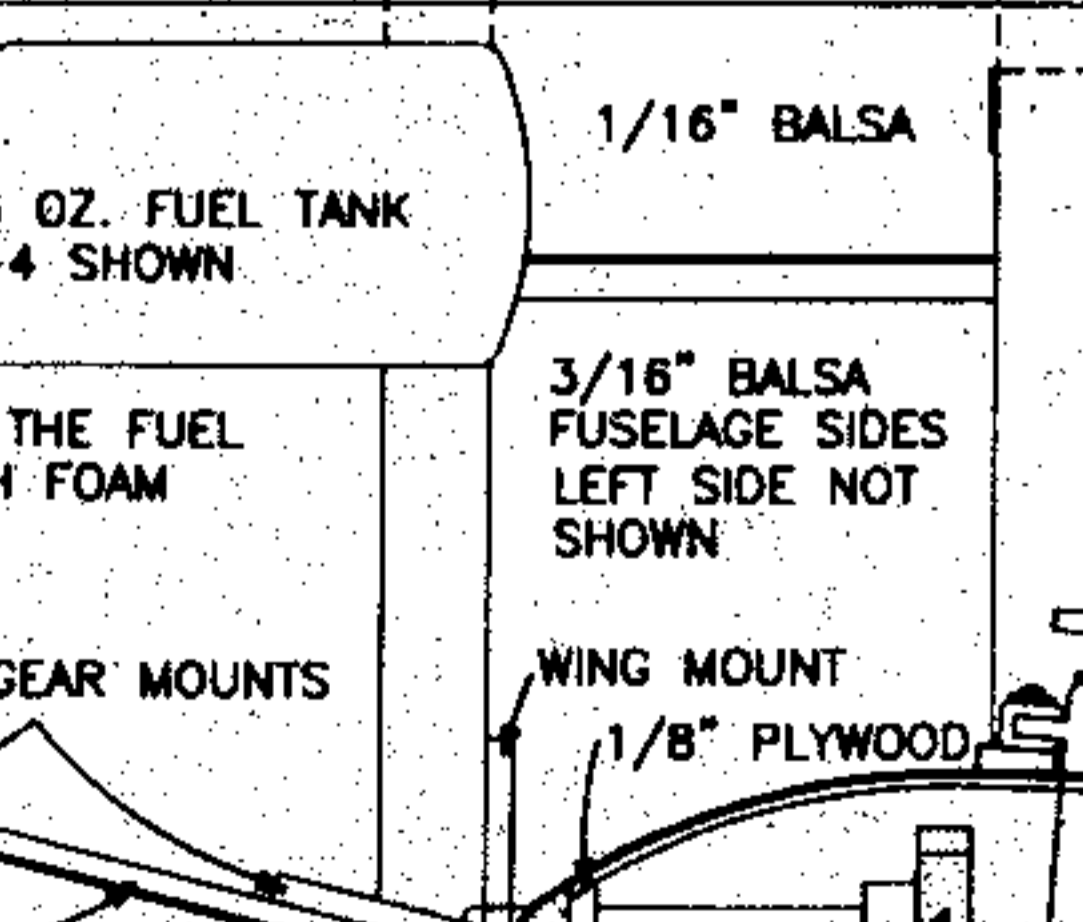
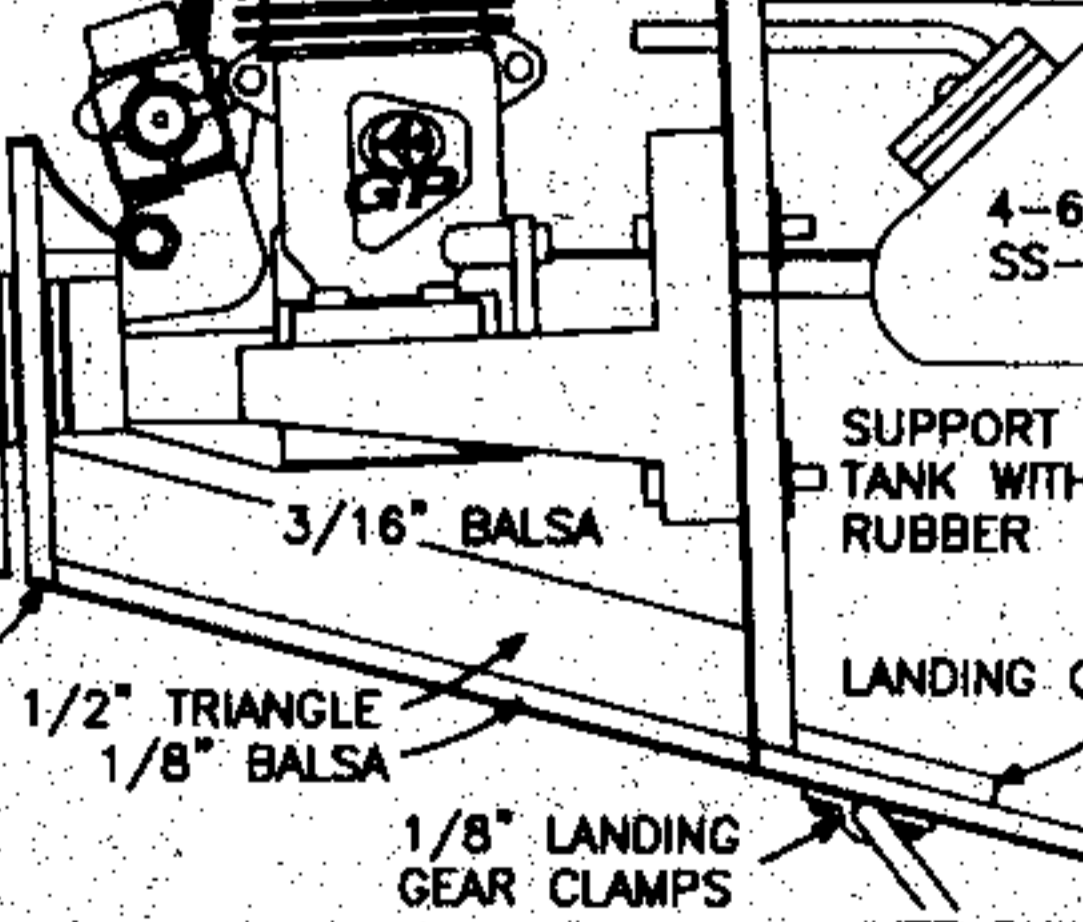
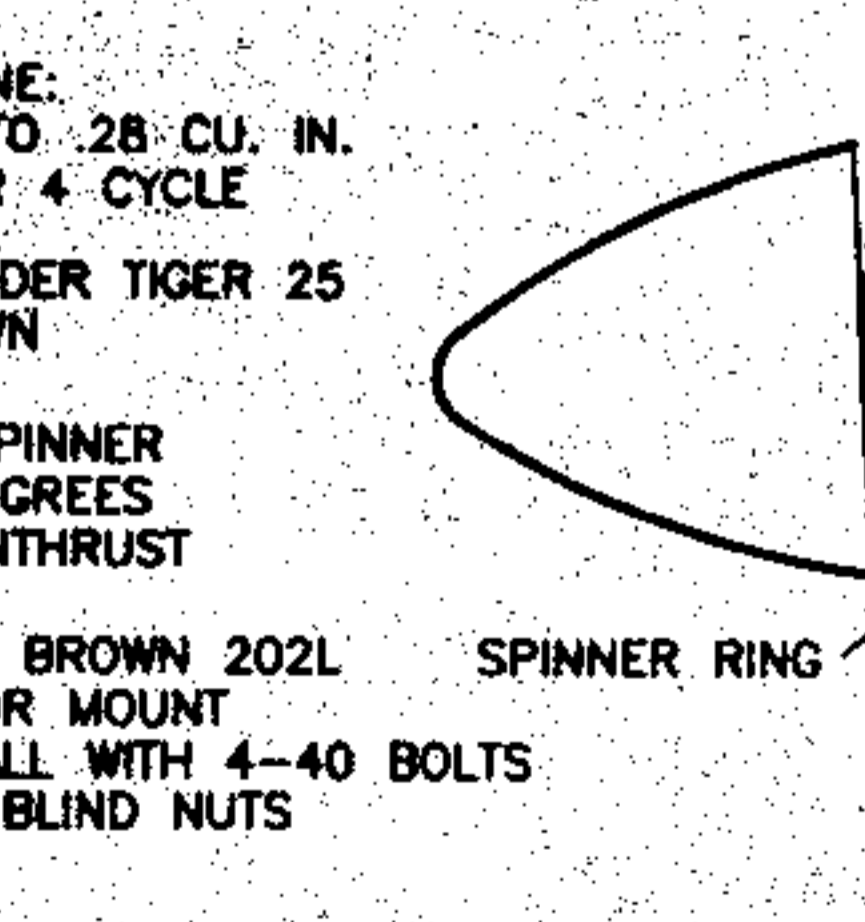
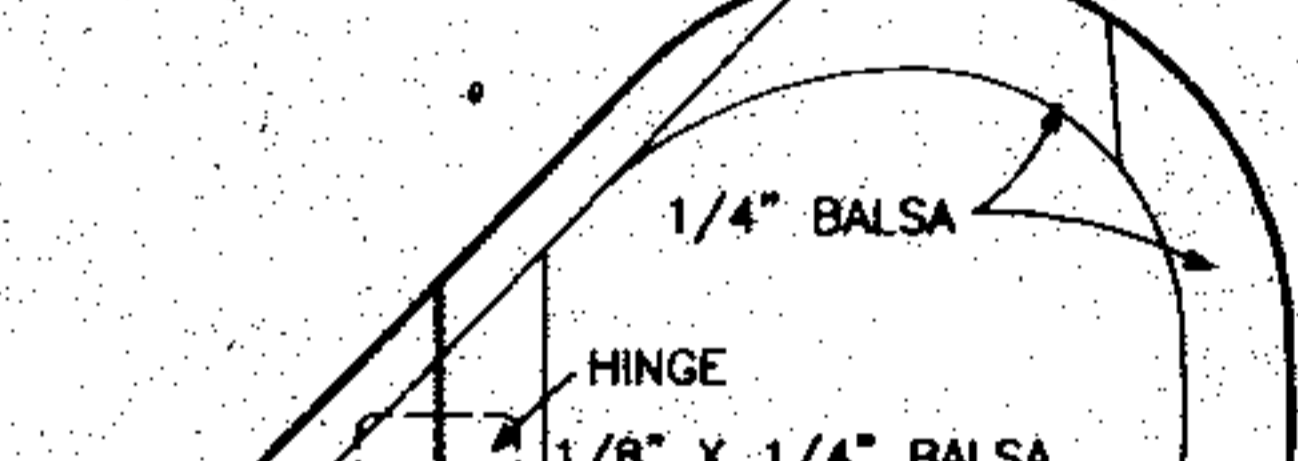
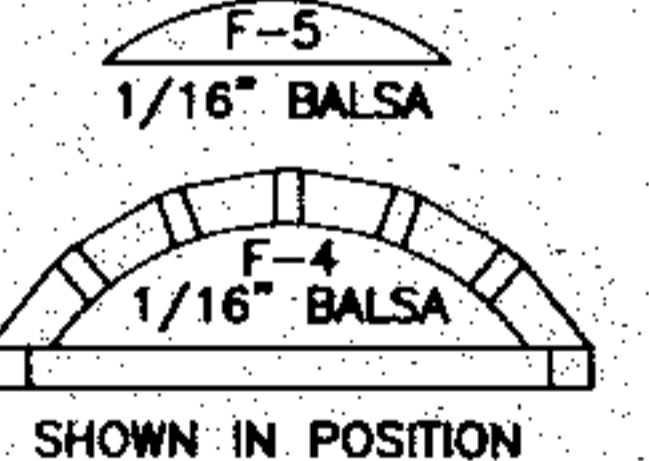
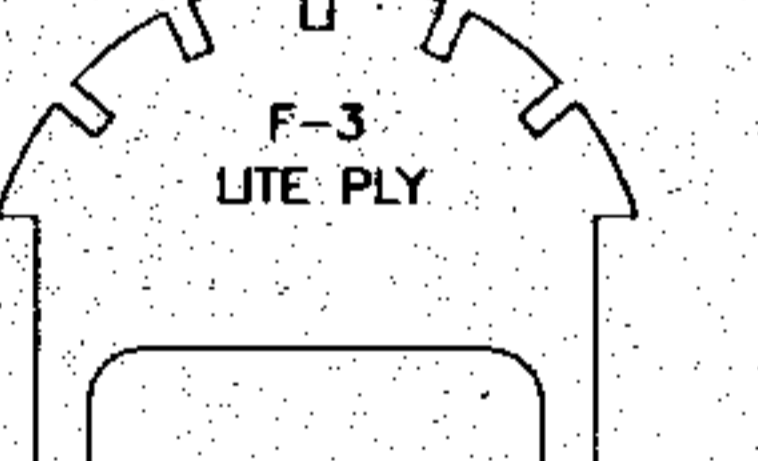
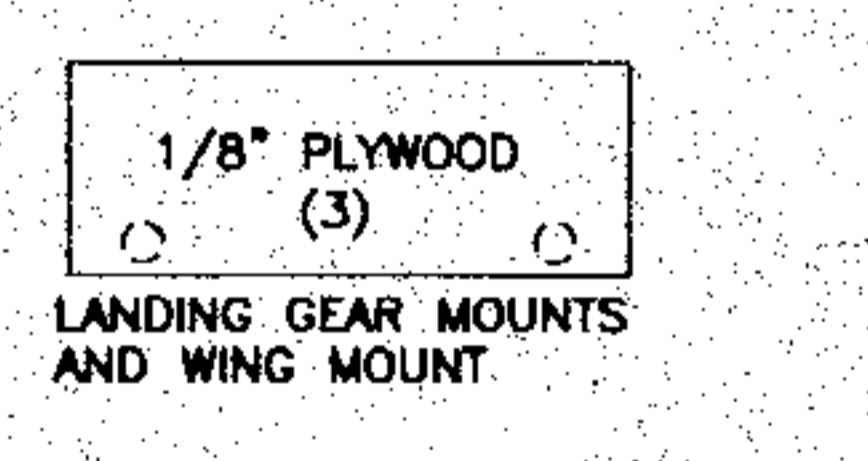


CONTROL MOVEMENT
 ELEVATOR 1/2" UP AND DOWN
 RUDDER 1-1/2" RT AND LEFT
 ALERONS 3/8" UP, 1/4" DOWN



1 DEGREE POSITIVE INCIDENCE ON TOP WING ONLY

CG ANGLE HOLD-DOWNS TOP WING IS SNAPPED INTO THE ANGLE HOLD-DOWNS FOR ASSEMBLY AND TAKE DOWN. SLOTS MUST FACE FORWARD.



WINGSPAN	39 IN.
WING AREA	515 SQ. IN.
LENGTH	35 IN.
WEIGHT	3 TO 3-1/2 LBS.
ENGINE	.20-.28 CU. IN. 2 OR 4 CYCLE
RADIO	4 CHANNEL

© 1941 ALL COMMERCIAL RIGHTS RESERVED

GOLDEN OLDIE 20

DESIGNED AND DRAWN BY FRED REESE