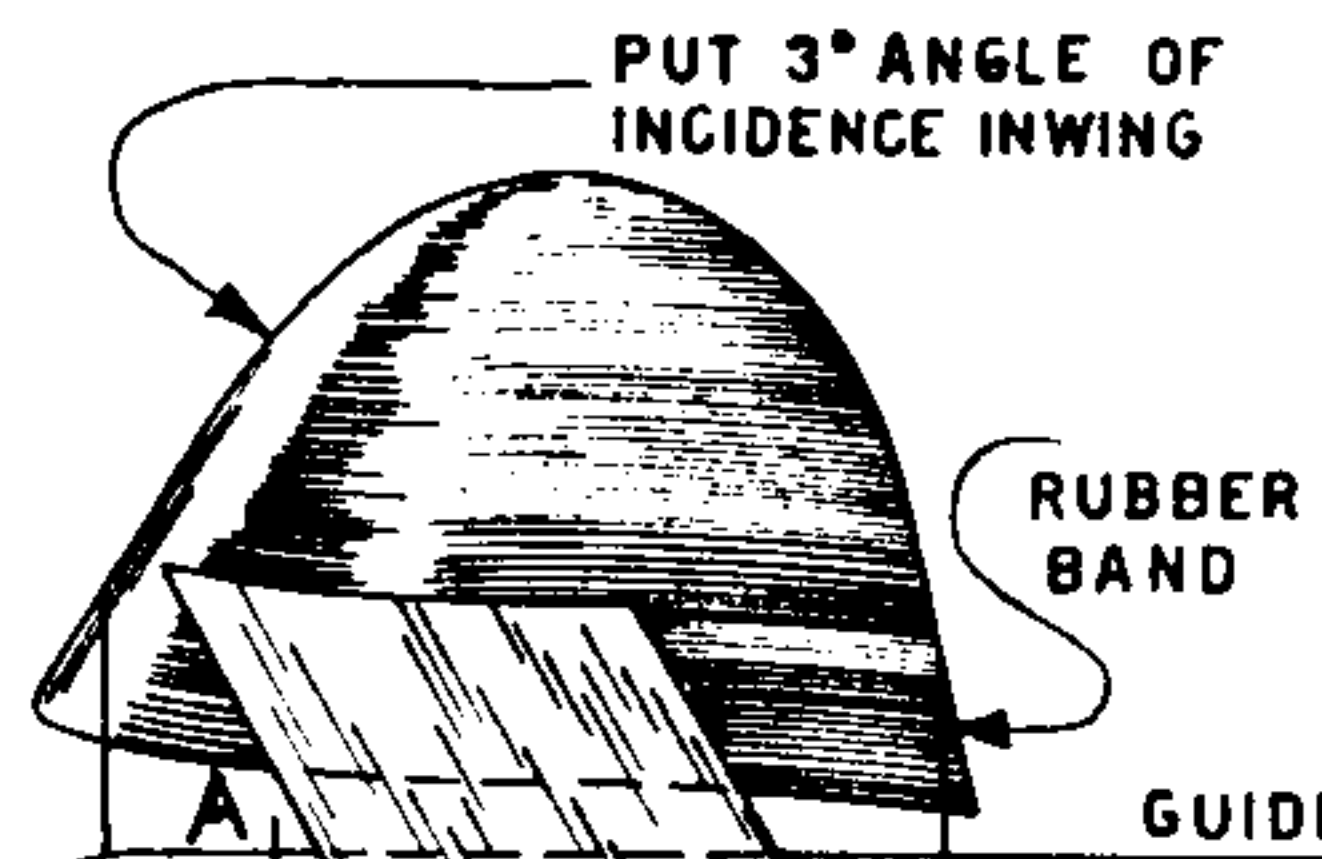
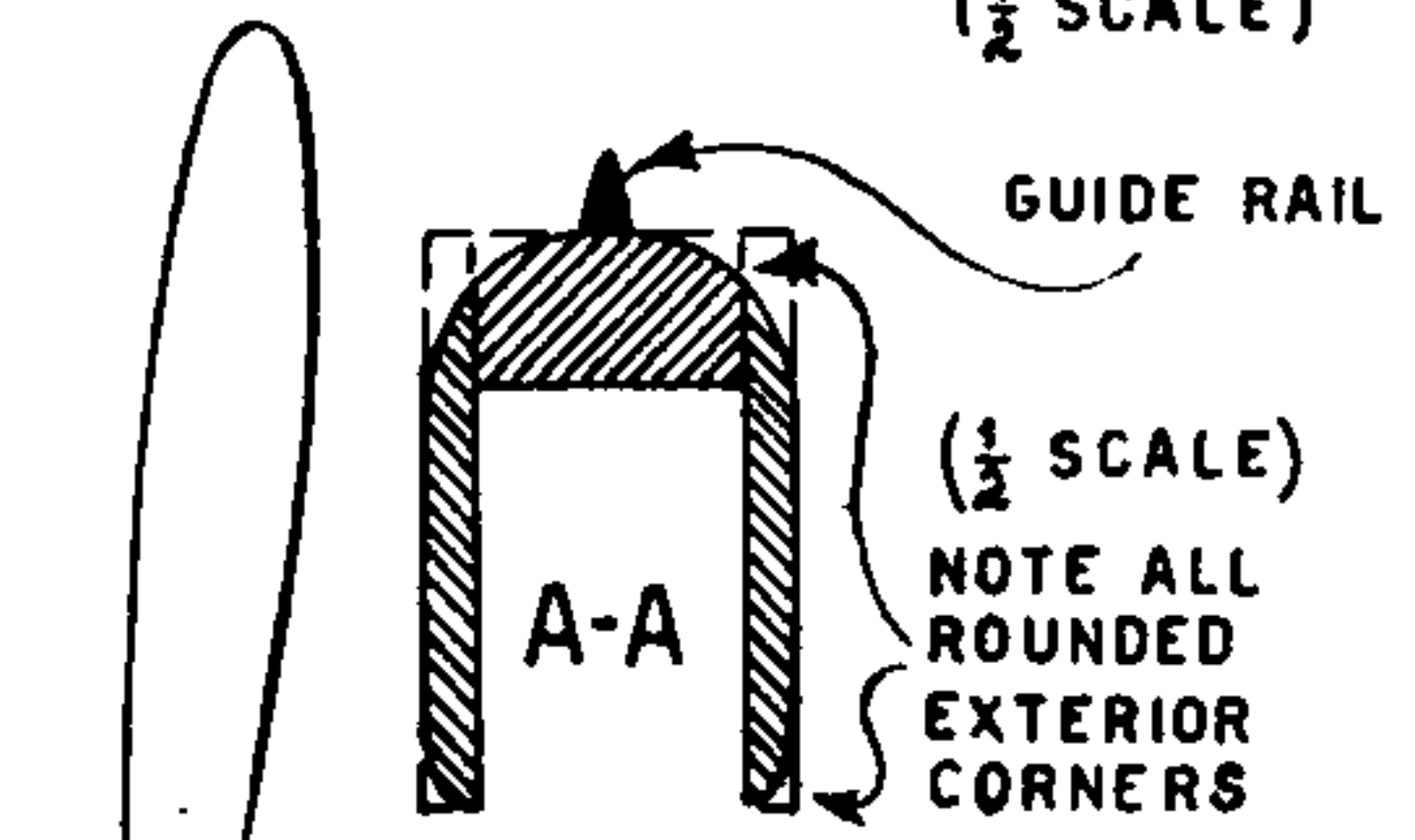
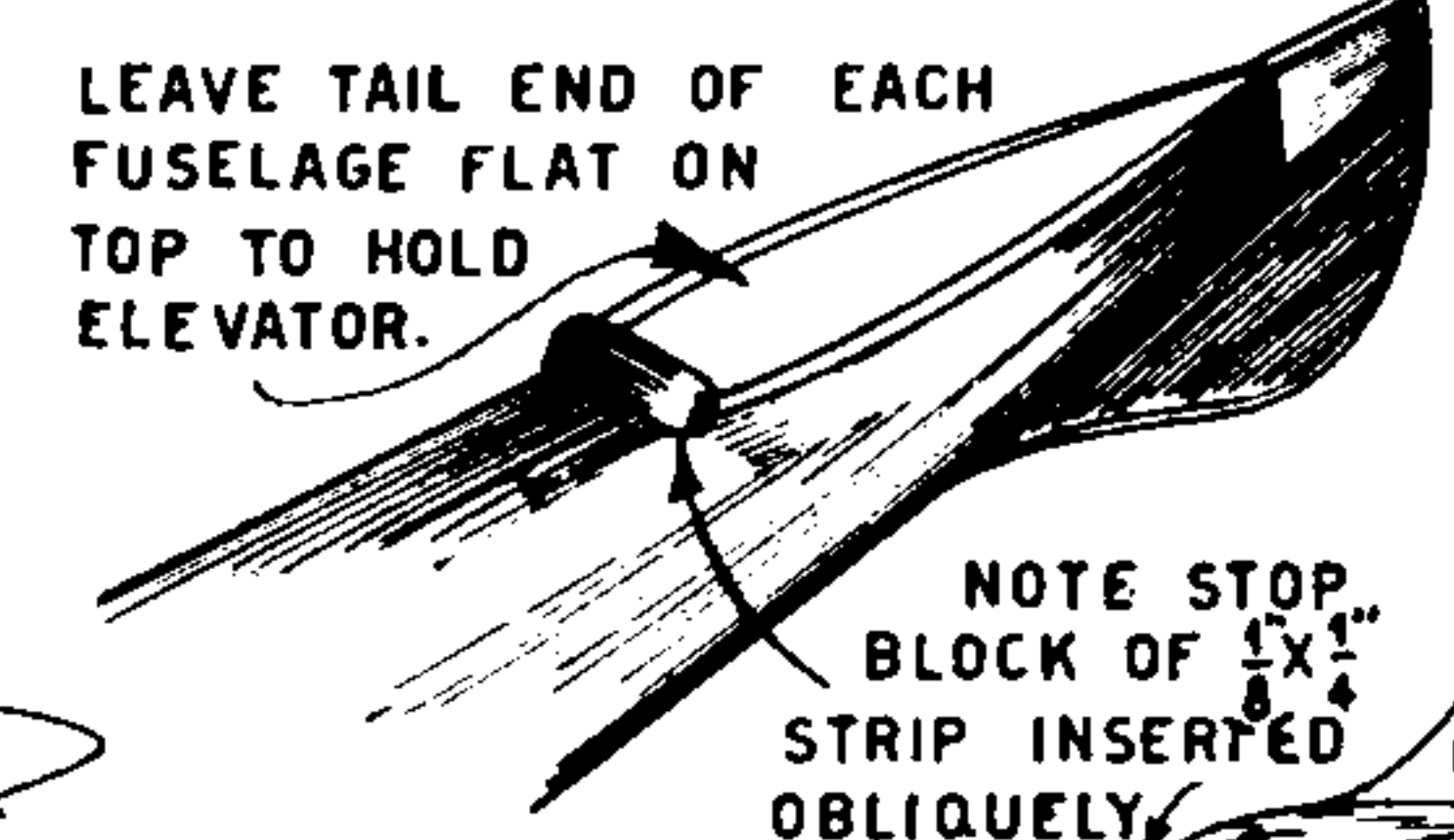


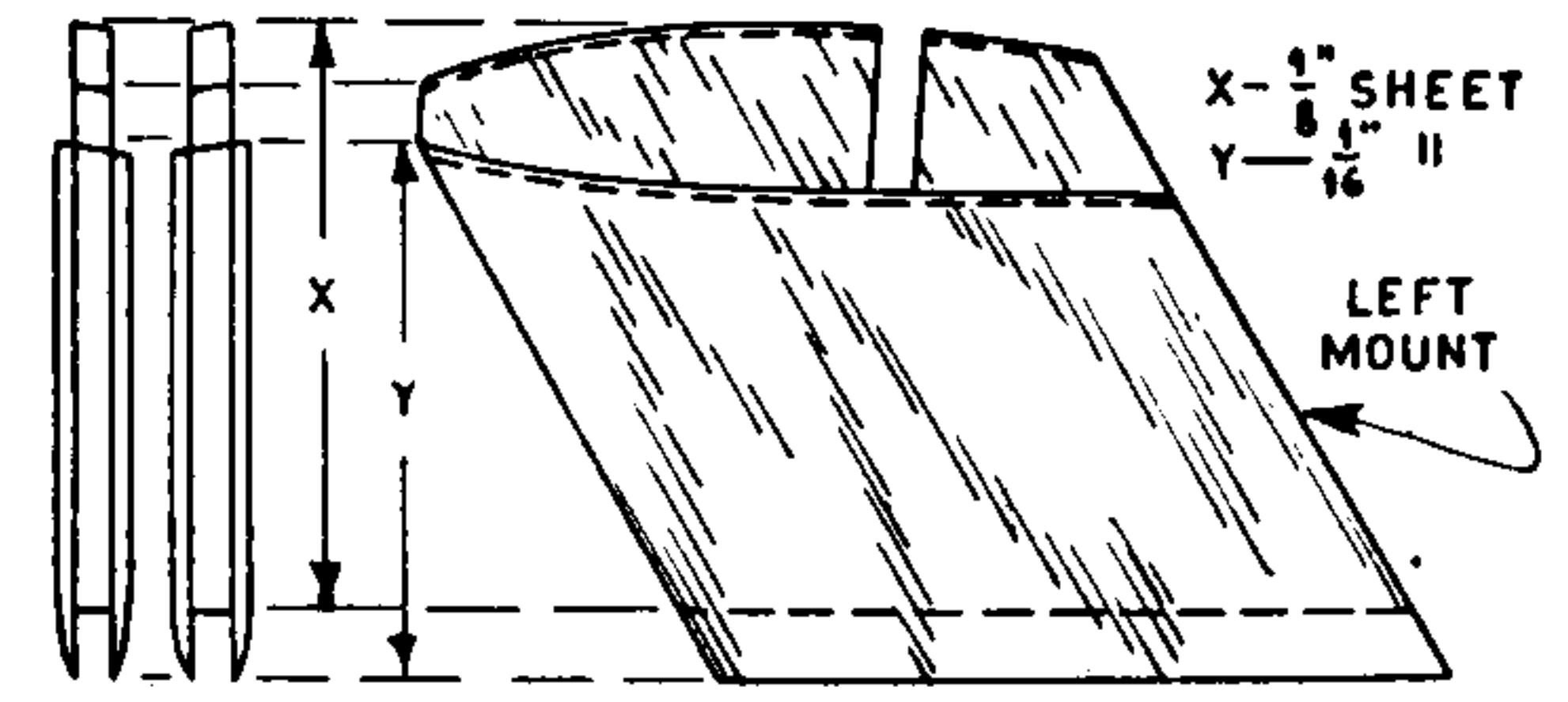
ROOT RIB-TYPICAL WING SECTION
(1/2 SCALE)



MAKE CARDBOARD JIG THIS SHAPE TO GIVE PROPER INCLINATION TO RIBS WHEN CONSTRUCTING THE WING.

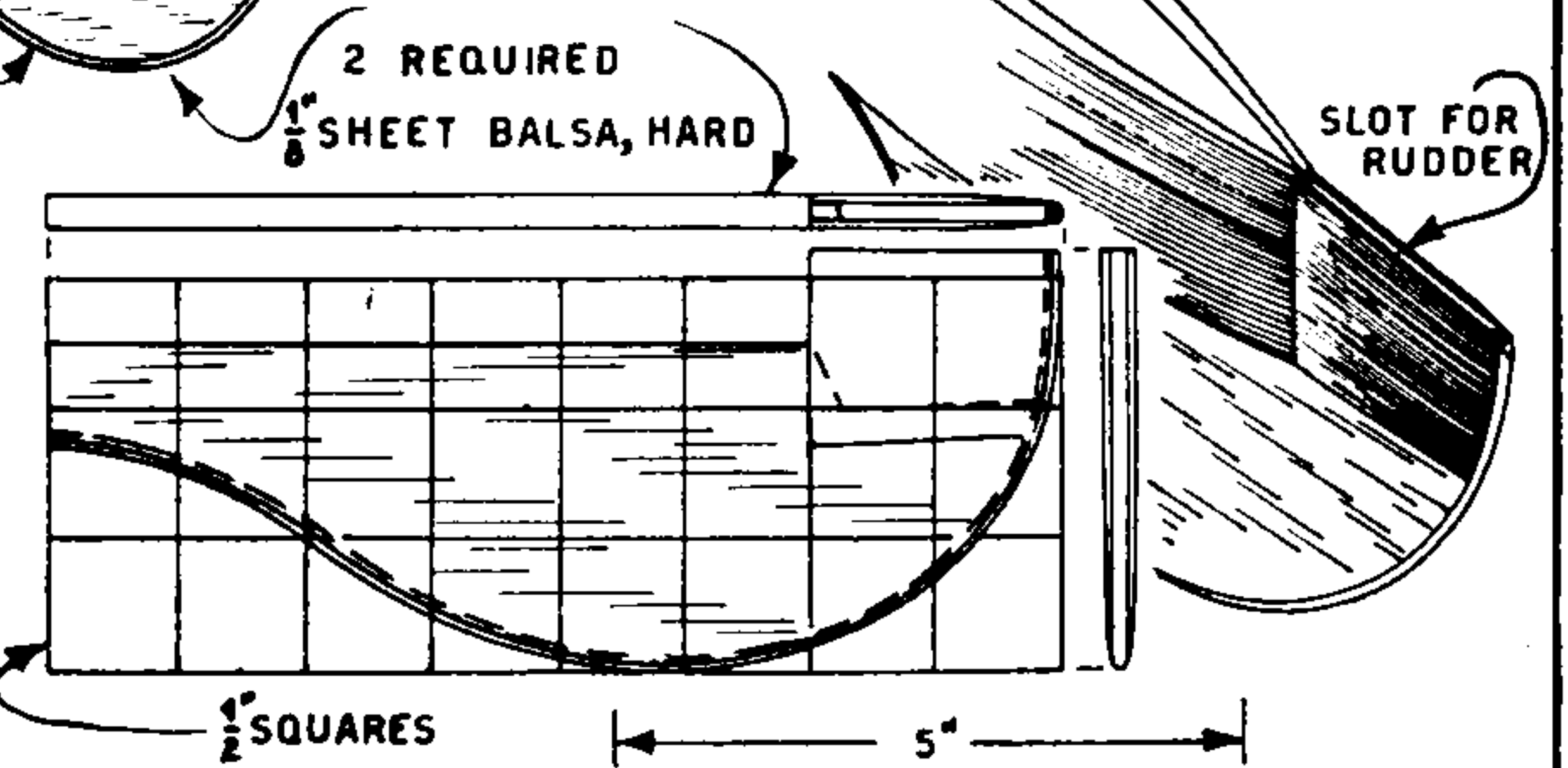


WING MOUNTS
(SEE DETAIL)



WING MOUNTS (1/2 SCALE) 2 REQ'D.

SUB-RUDDER



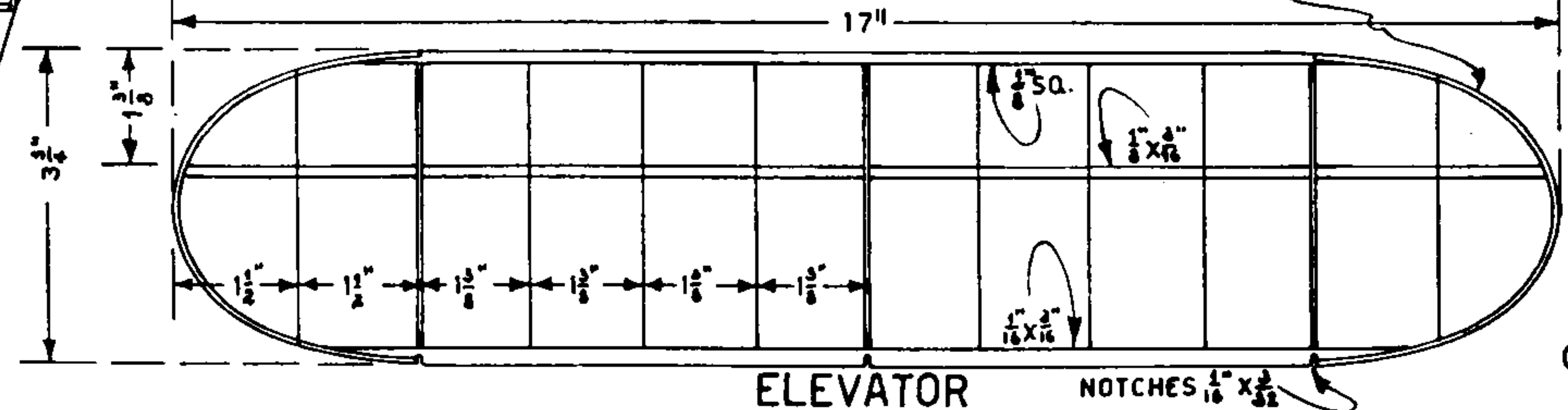
POWER:

EACH MOTOR 8-10 STRANDS 1/16" FLAT BROWN LUBED

REQ'D TURNS 650 TO 1000 EACH MOTOR

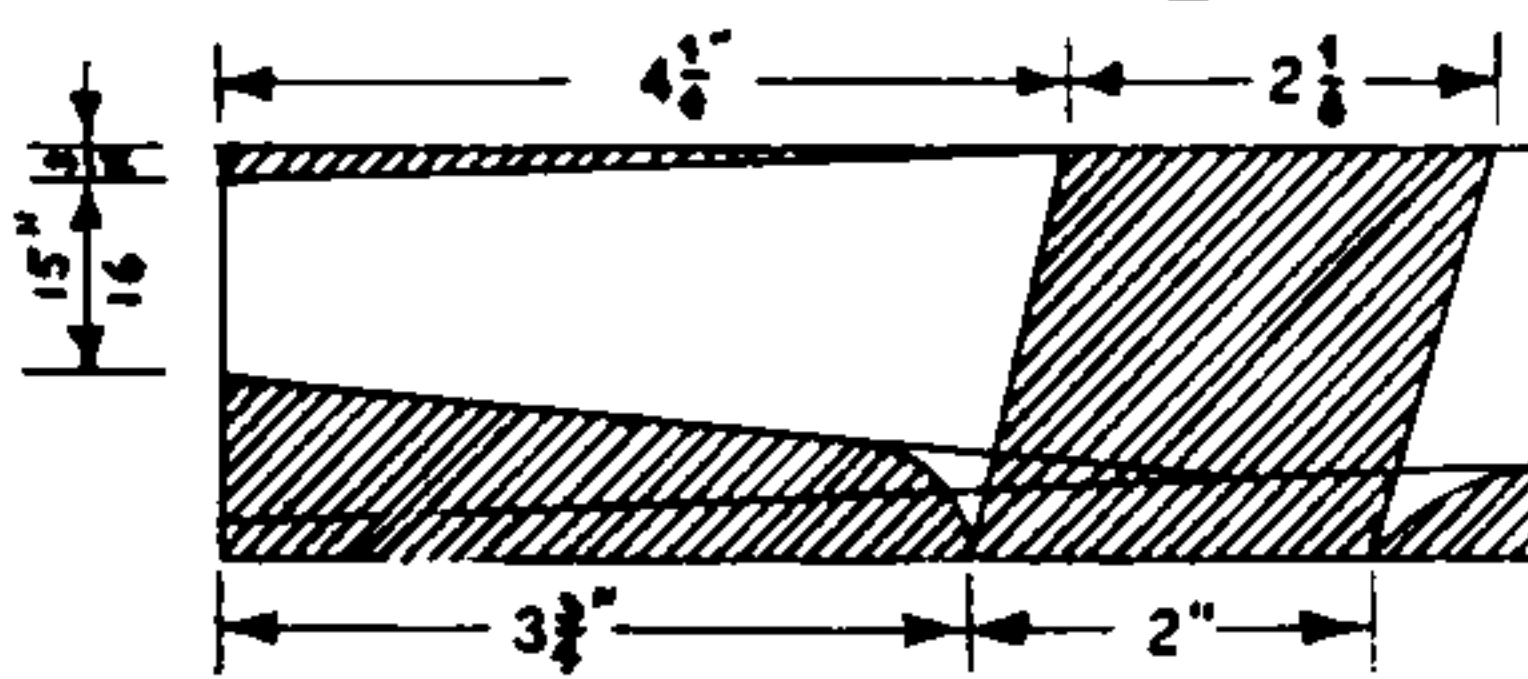
SIDE ELEVATION

INDICATES POINTS WHERE CROSS-BRACES ATTACH TO FUSELAGES.



ELEVATOR

NOTCHES 1/16" X 3/32"



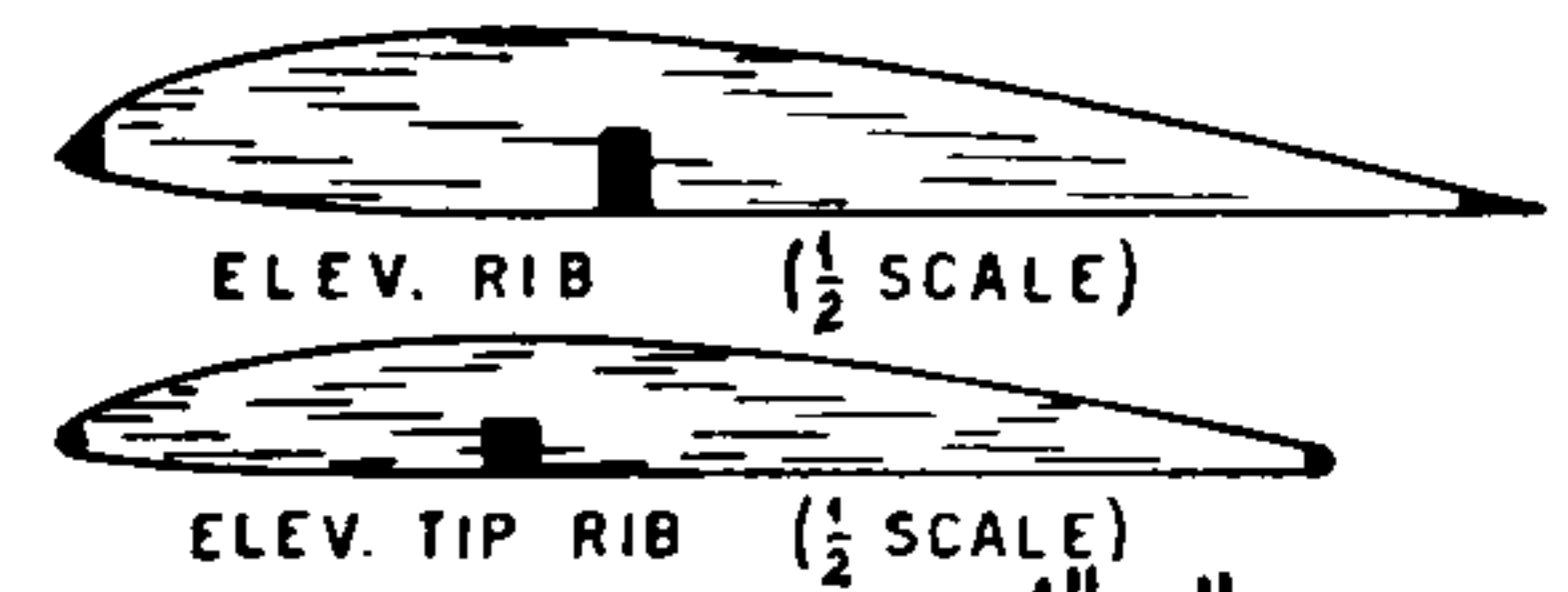
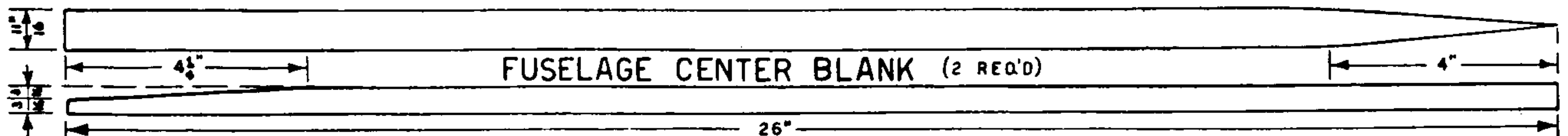
HOW TO LAY OFF 2 FUSELAGE SIDES ON SHEET OF 1/8" X 2" X 36" MEDIUM HARD Balsa.

2 SIDES EACH REQUIRED.

USE WHITE PORTIONS.

SHADED PORTIONS SCRAP.

FUSELAGE CENTER BLANK (2 REQ'D)



ELEVATOR RIBS 1/32" MED. SHEET EXCEPT 3 1/16"

SHEET RIBS TO HOLD RUDDERS.

SCALE: 1/4" = 1" EXCEPT WHERE NOTED