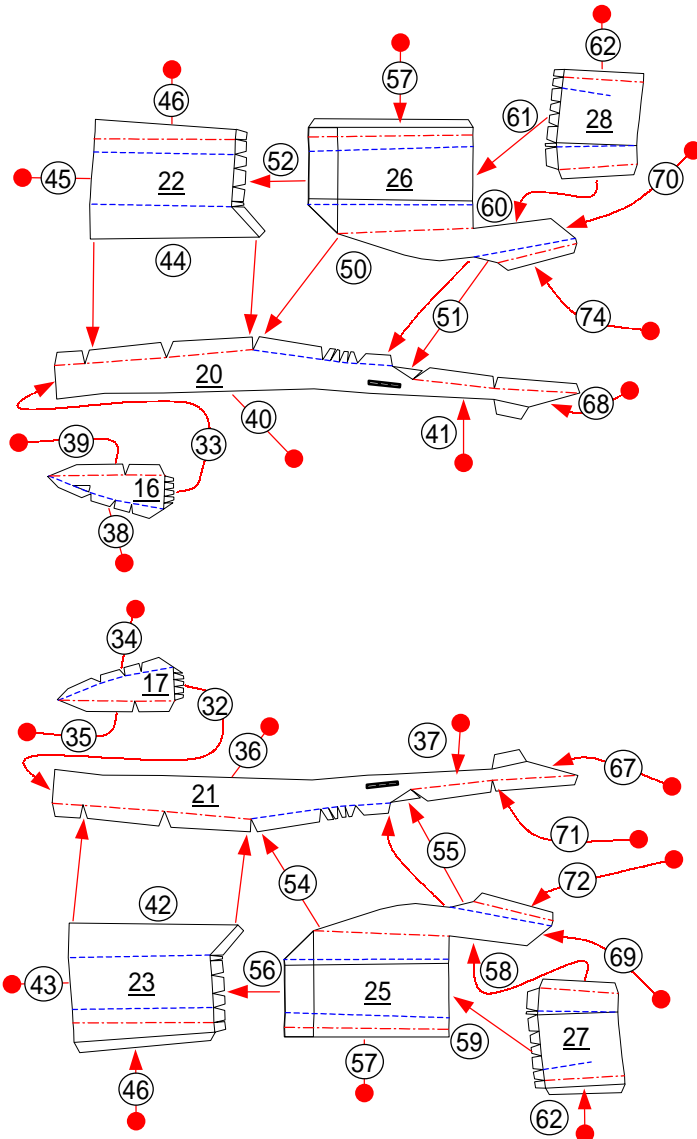
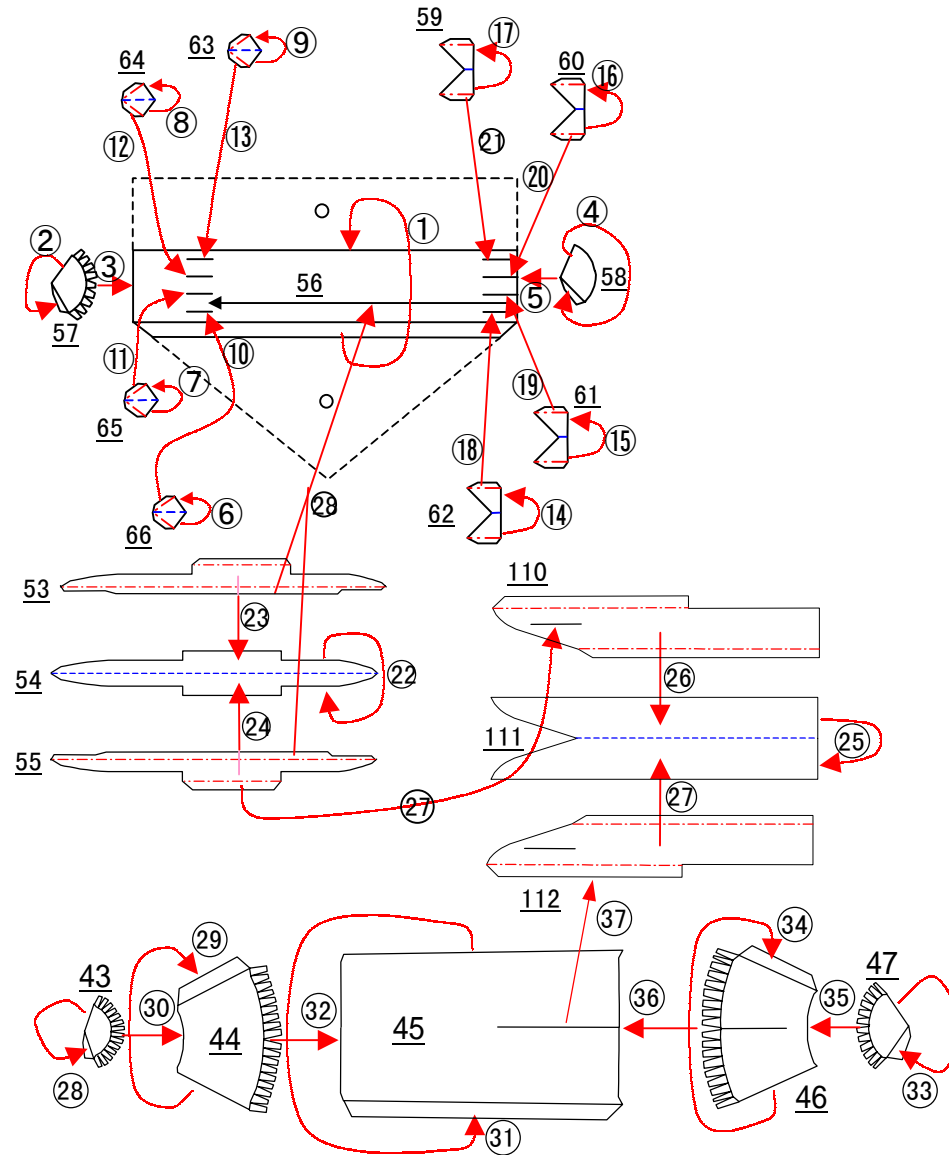


1 - 2 .

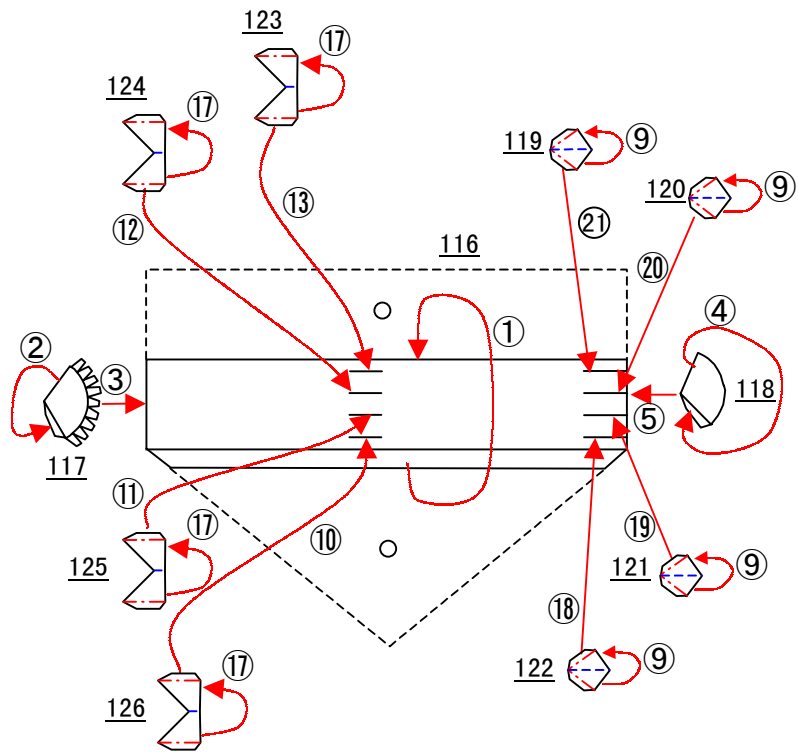


2. 点線部分で切り取ってのり代がわの角から丸めて、丸め終わったら○の部分切り離してから接着します。
48~52・67~108・113~115も同様に組み立てます。

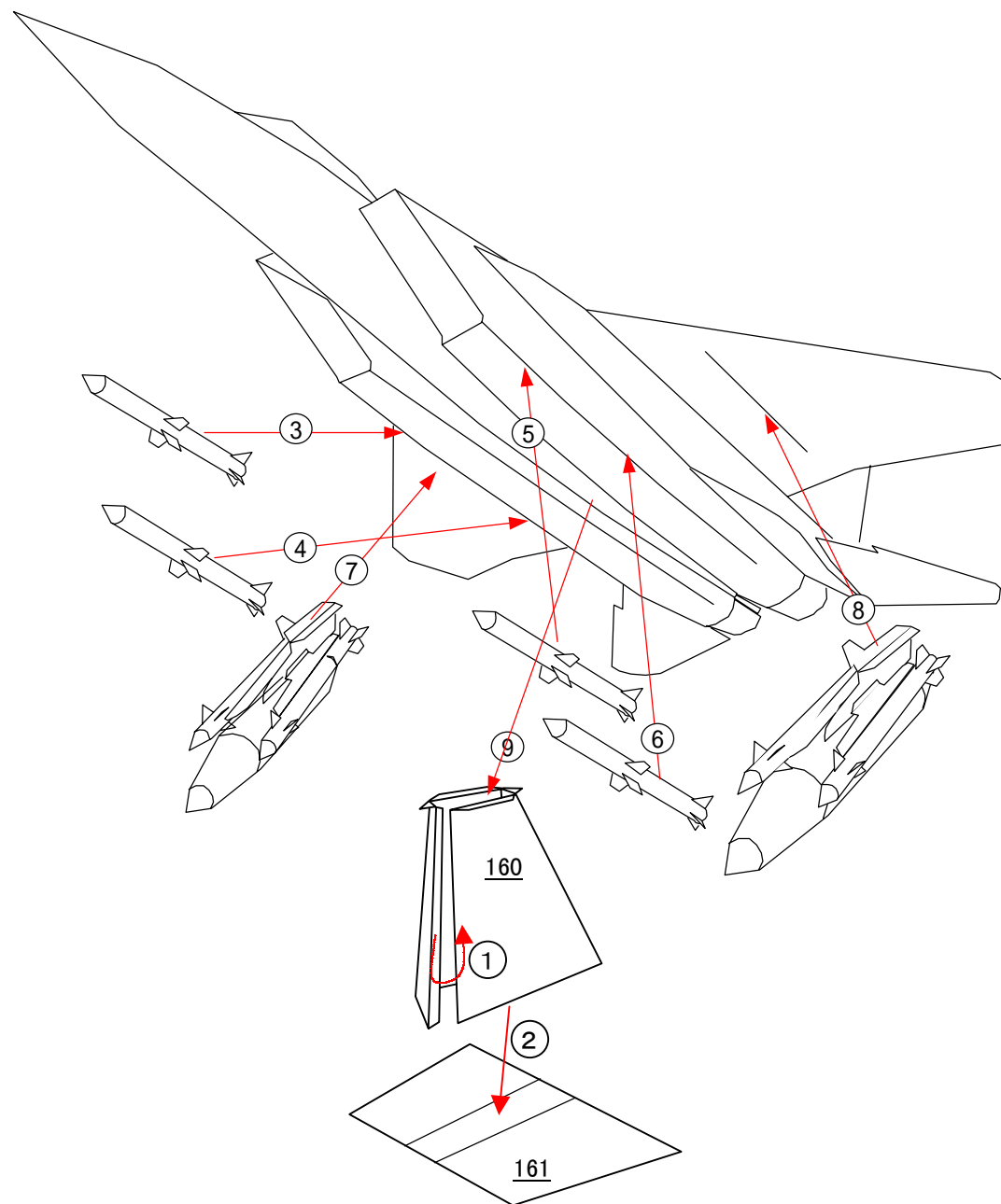


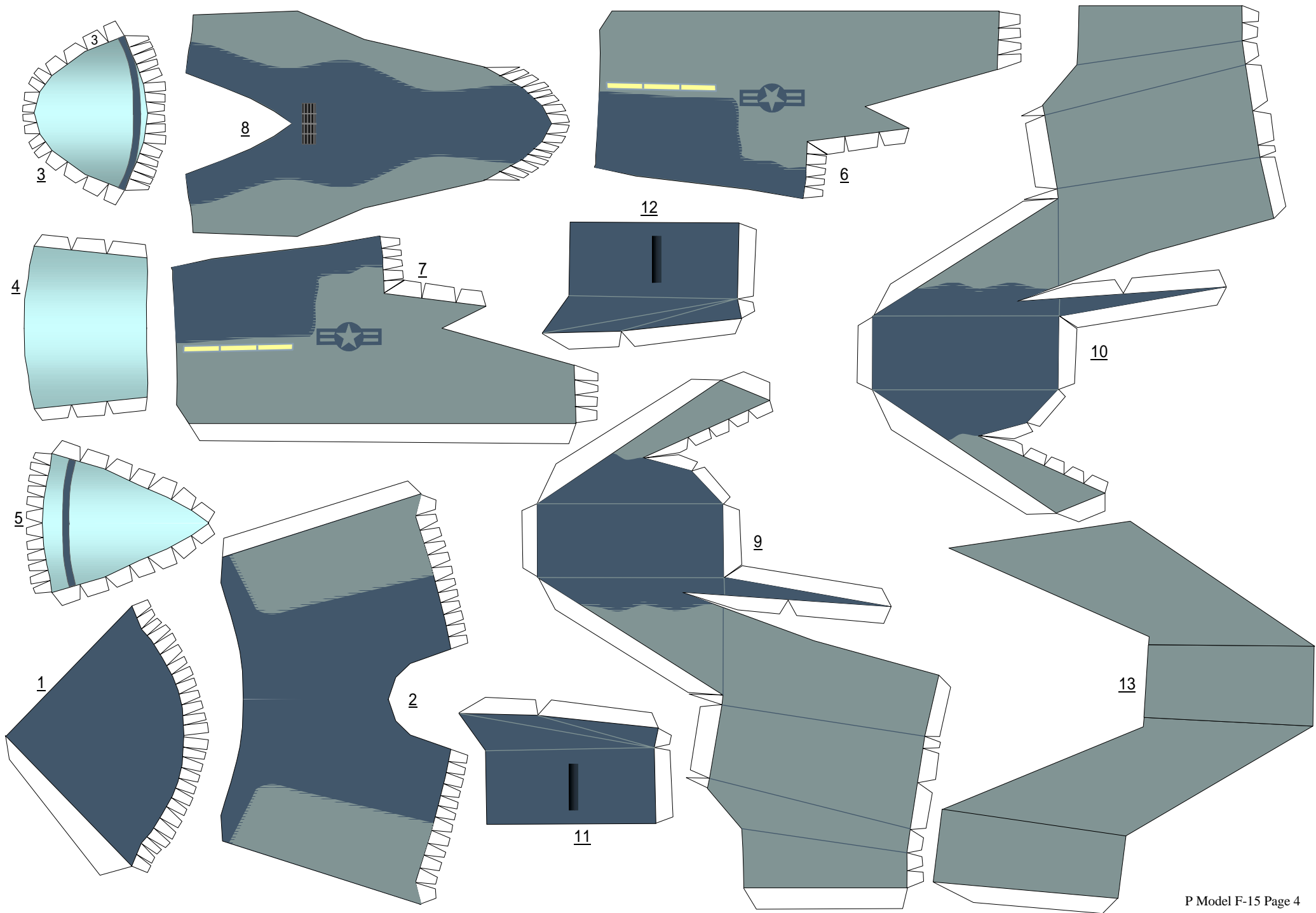
3. 点線部分で切り取ってのり代がわの角から丸めて、丸め終わったら○の部分切り離してから接着します。

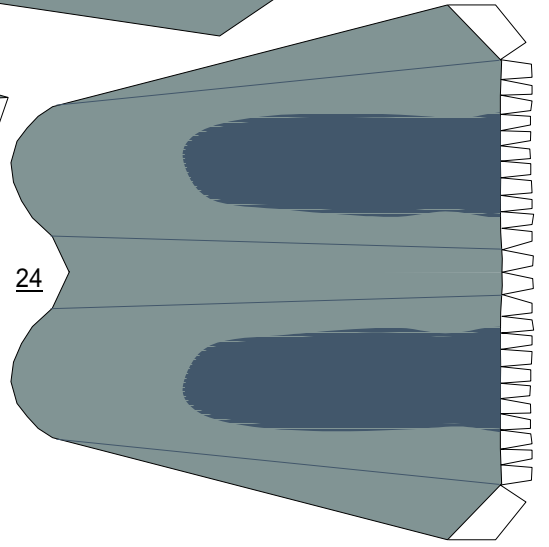
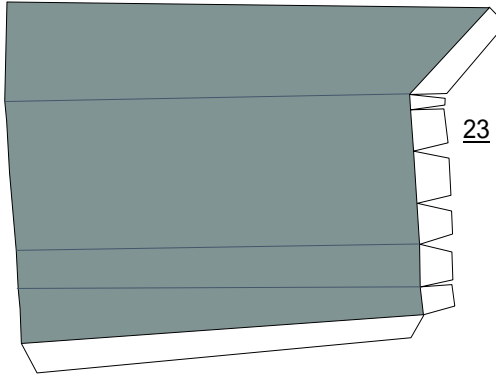
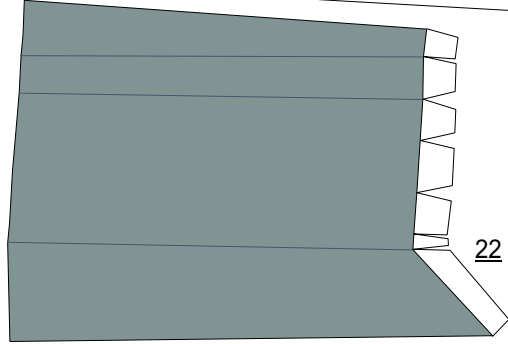
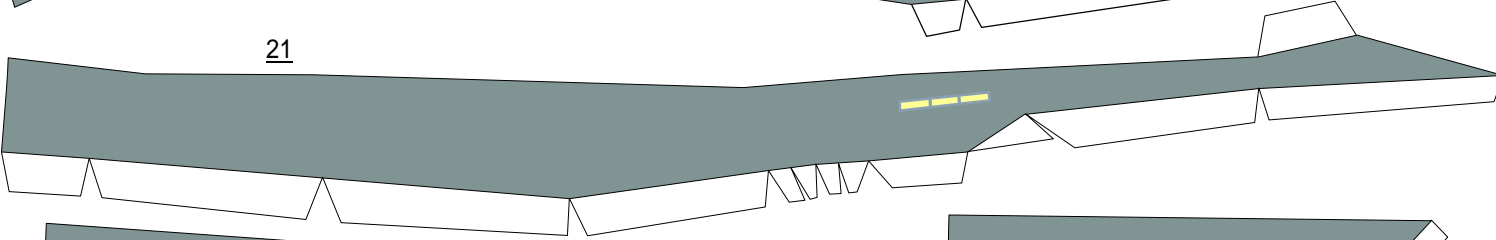
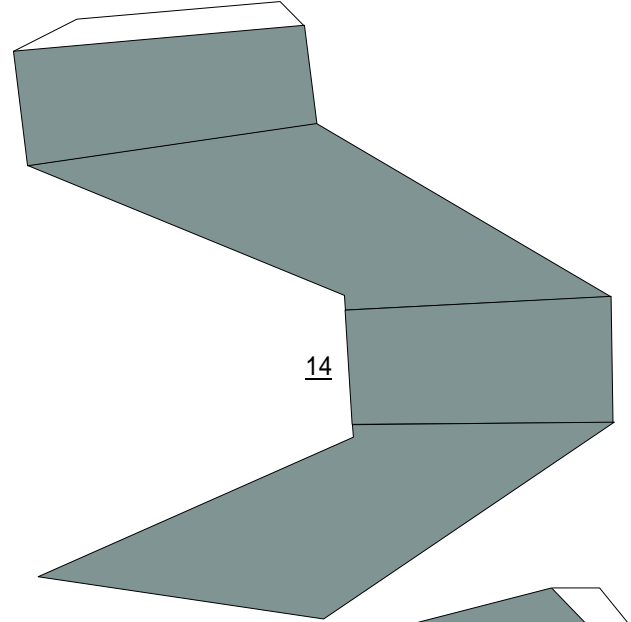
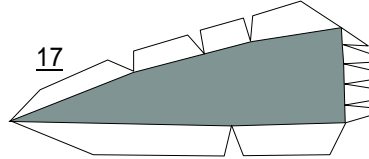
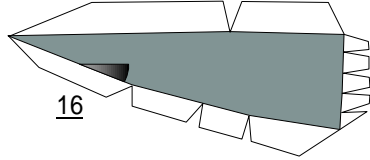
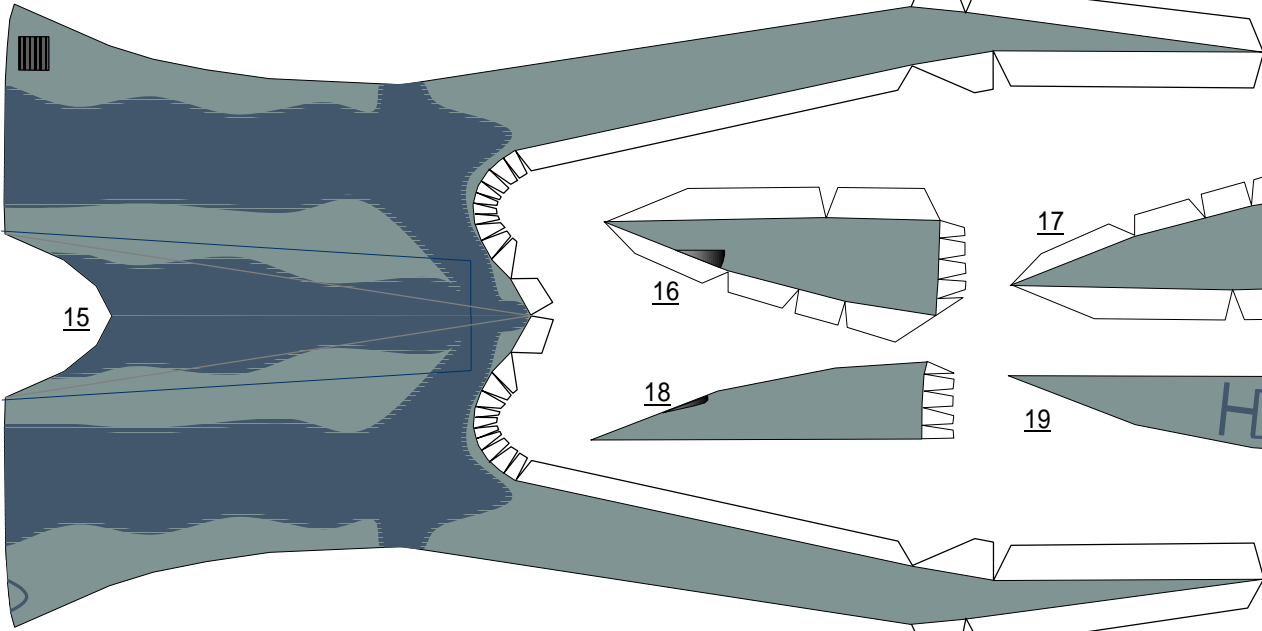
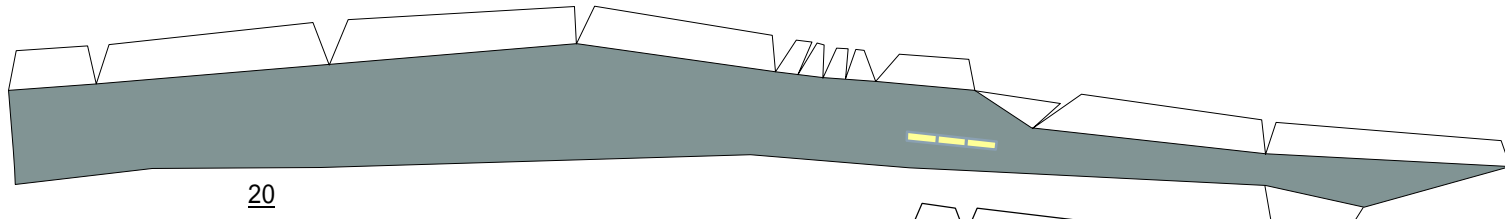
127～159も同様に組み立てます。

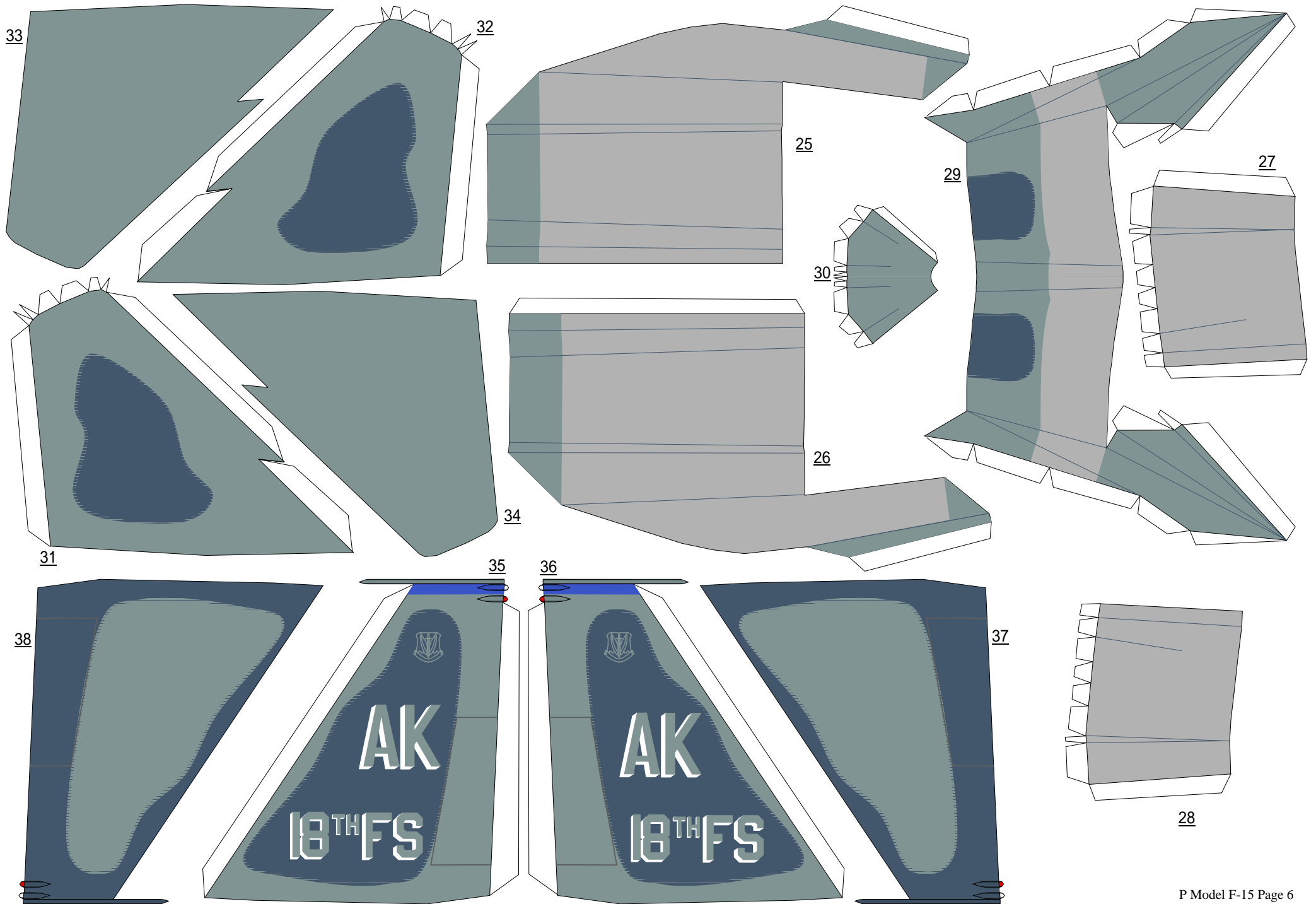


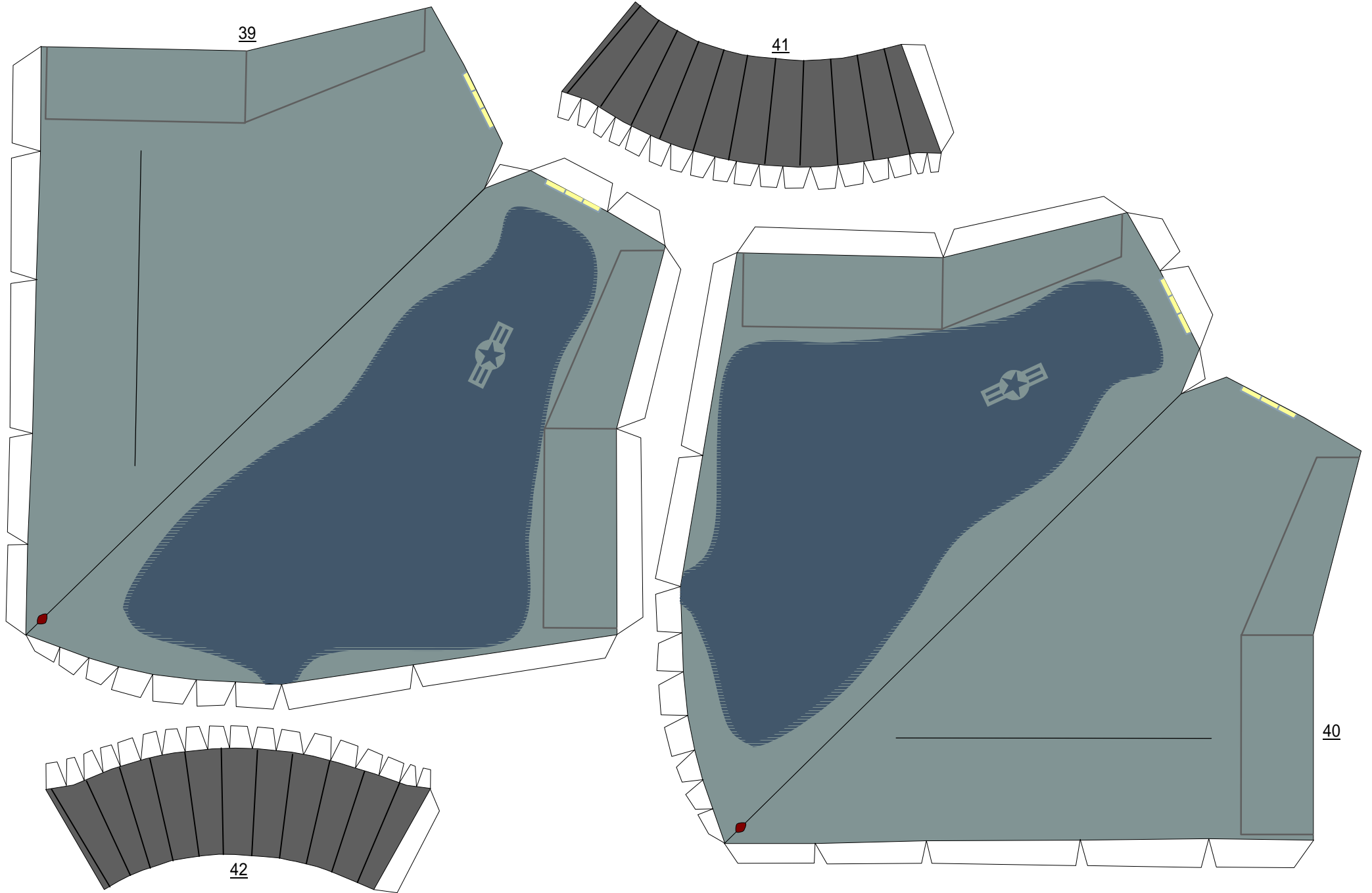
4. 各部品を接着して出来上がり。

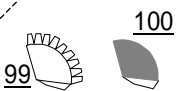
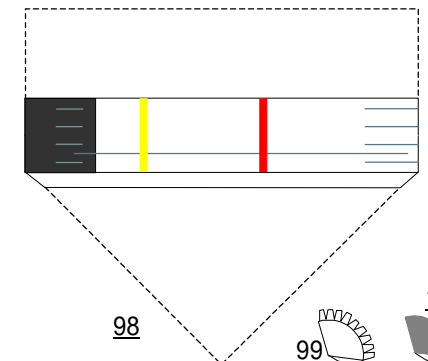
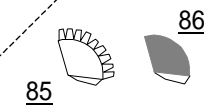
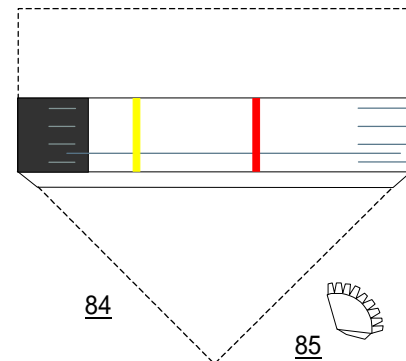
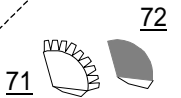
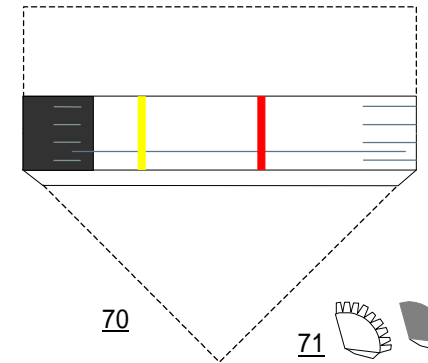
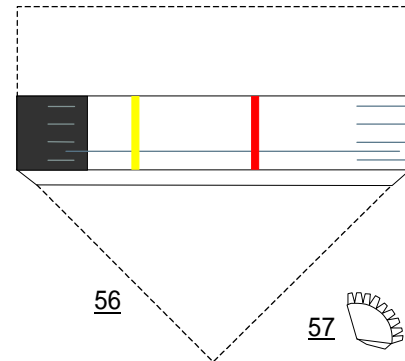
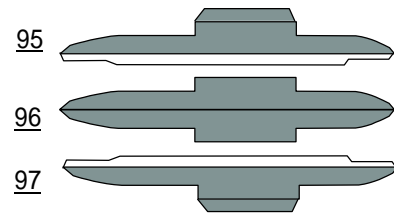
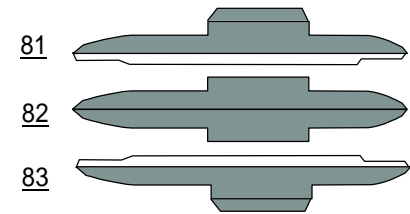
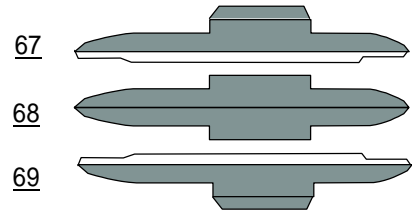
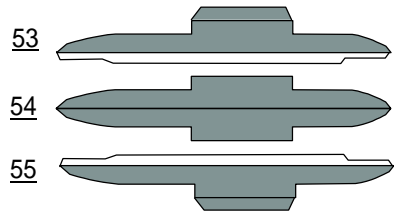
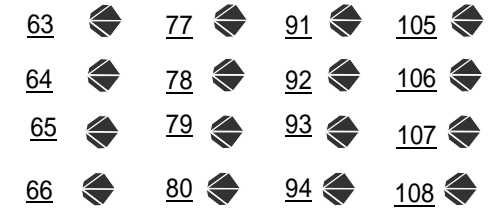
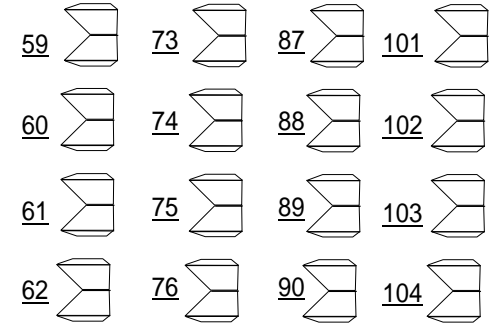
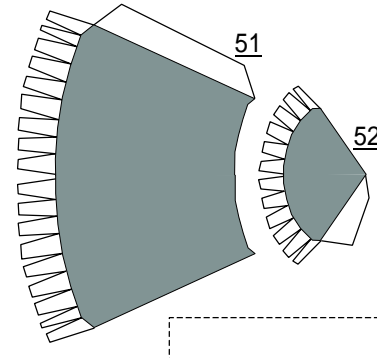
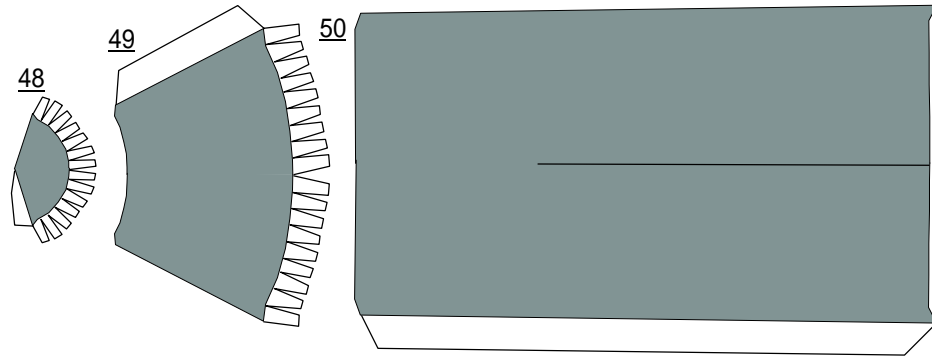
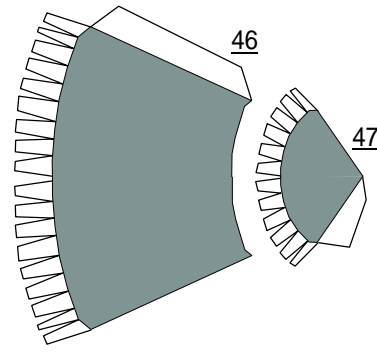
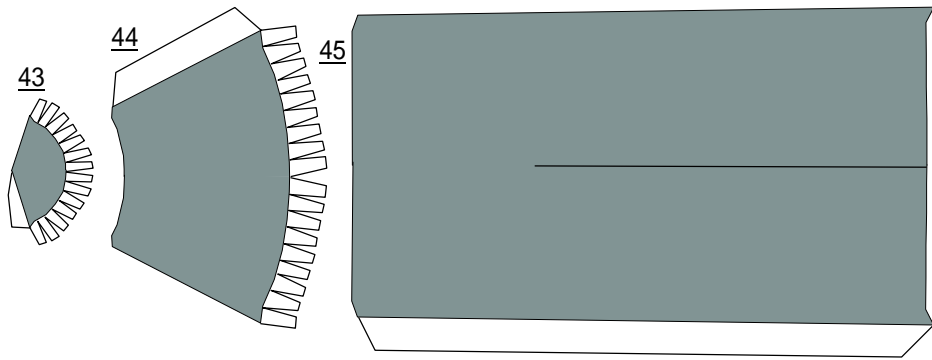


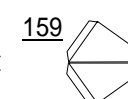
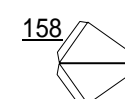
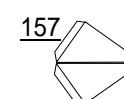
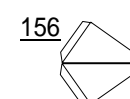
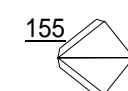
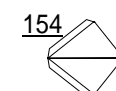
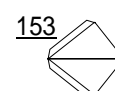
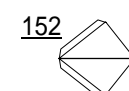
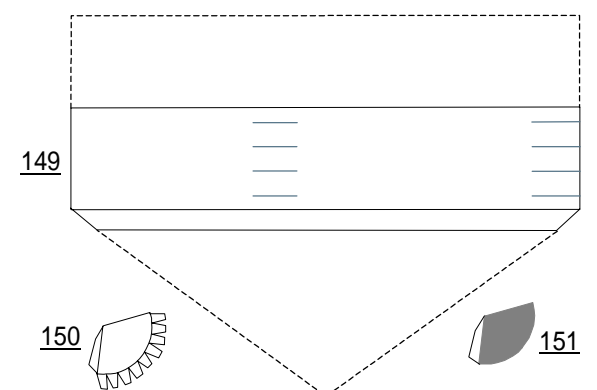
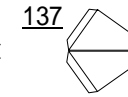
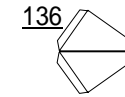
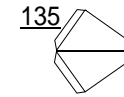
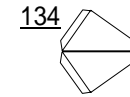
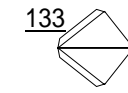
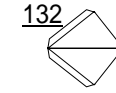
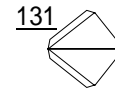
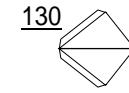
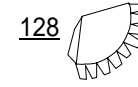
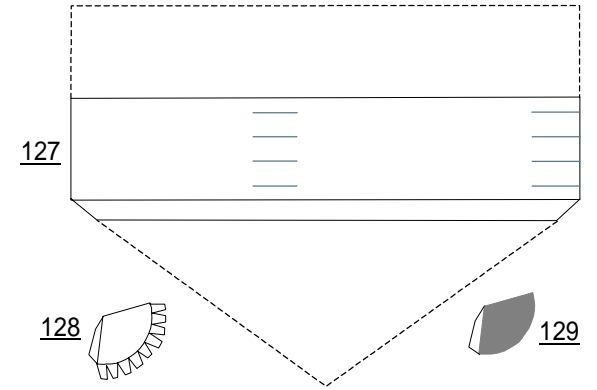
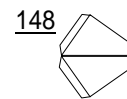
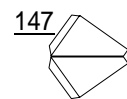
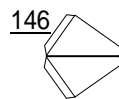
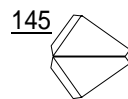
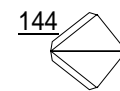
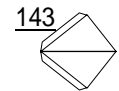
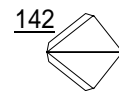
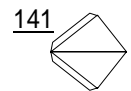
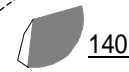
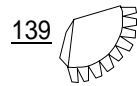
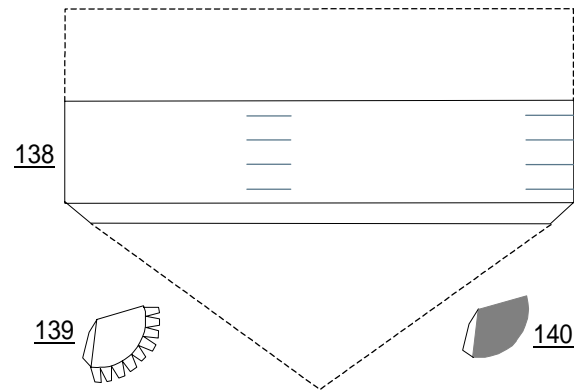
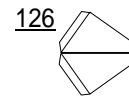
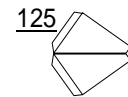
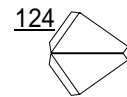
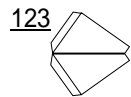
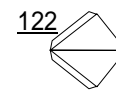
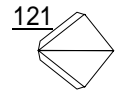
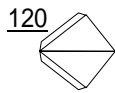
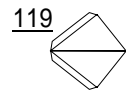
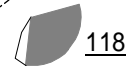
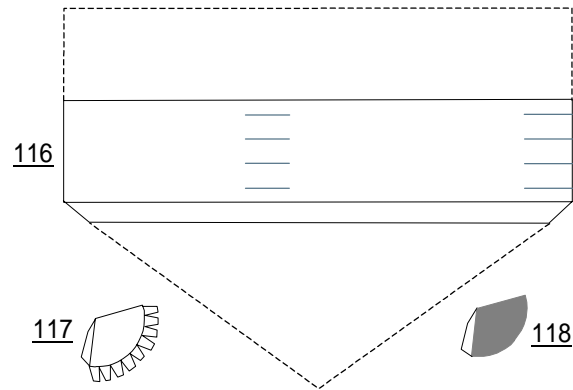
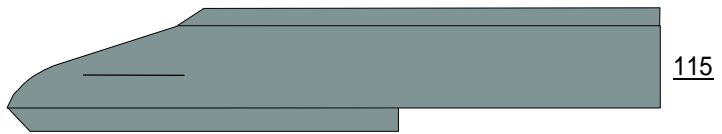
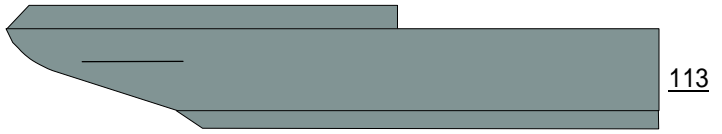
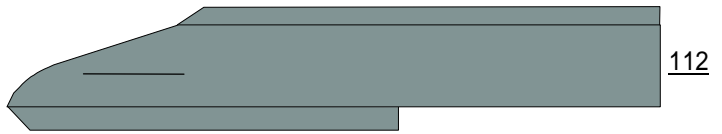
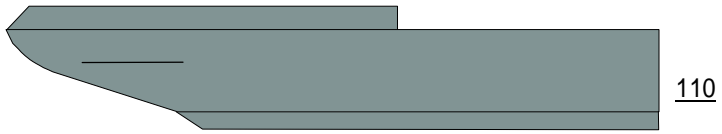


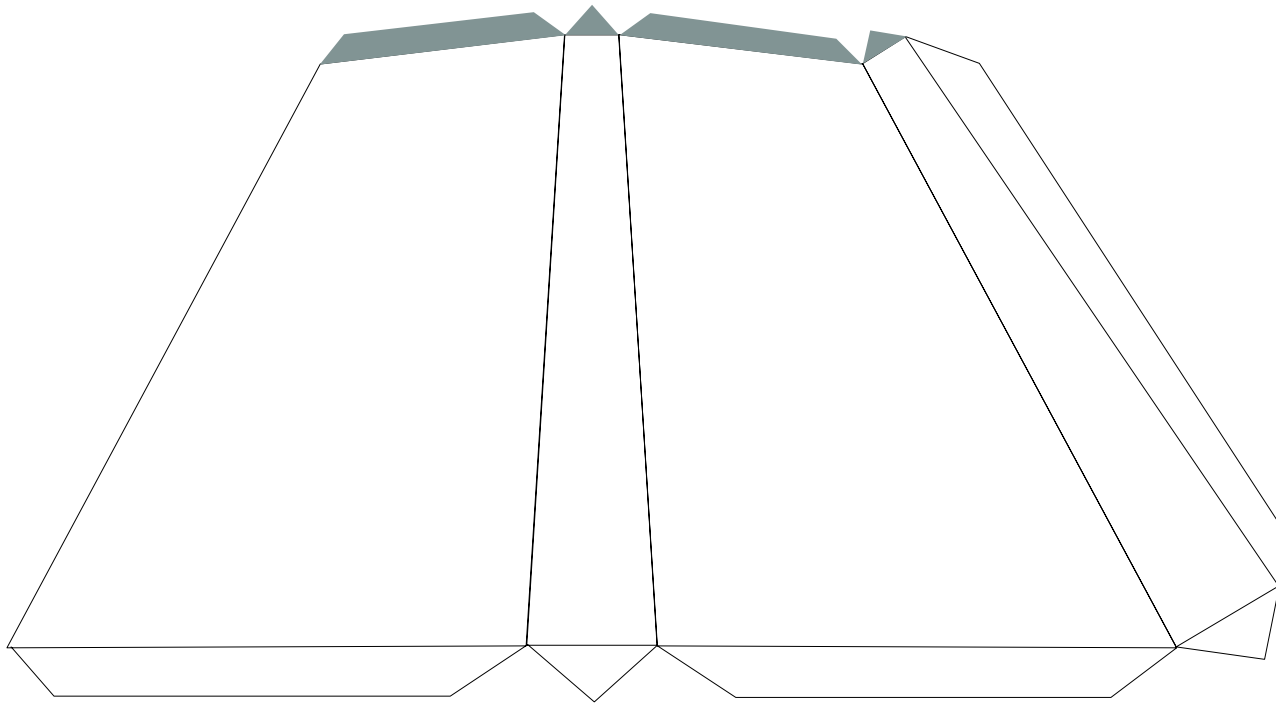




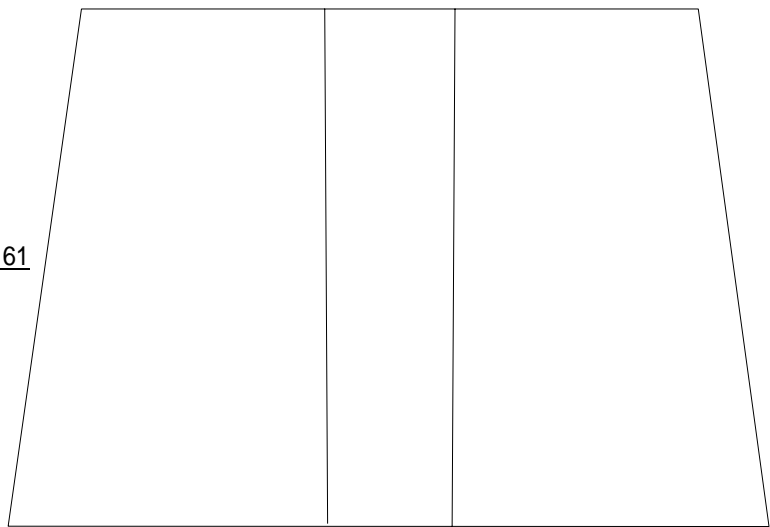








160



161