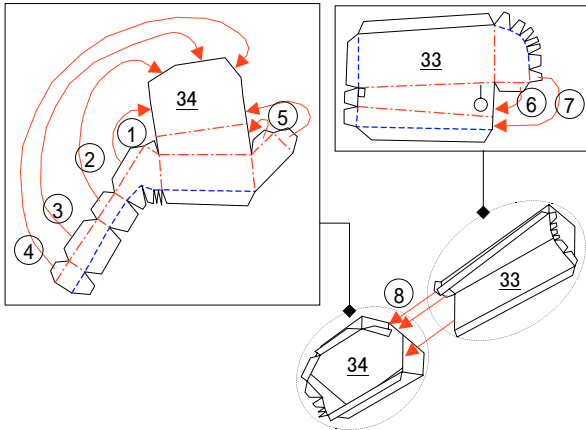




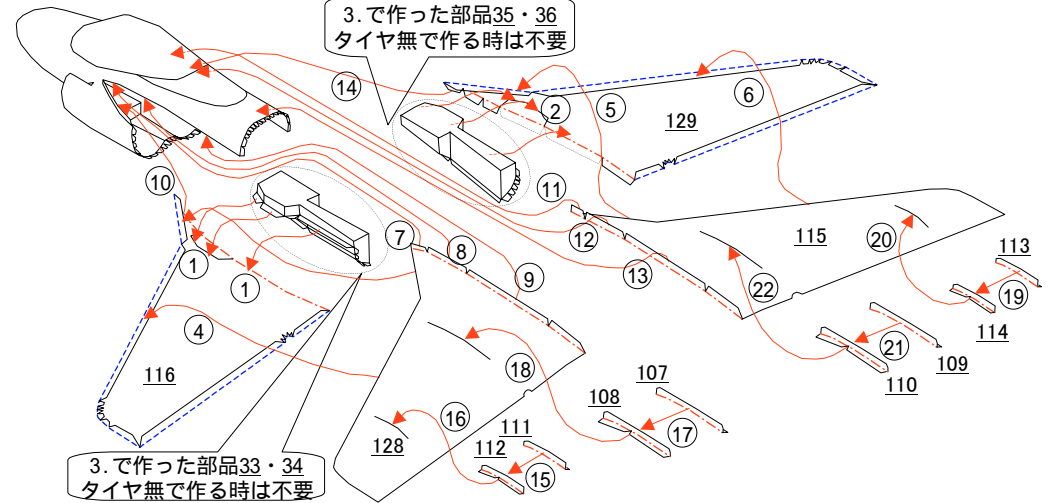
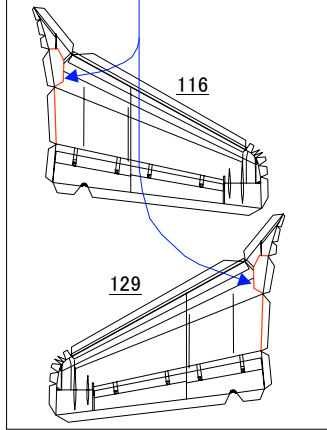
3. タイヤ付きで作る時は部品33・34を作成後  
部品35・36も同様に作成してください。

タイヤ無しで作る時は部品33・34・35・36の  
作成は不要です。



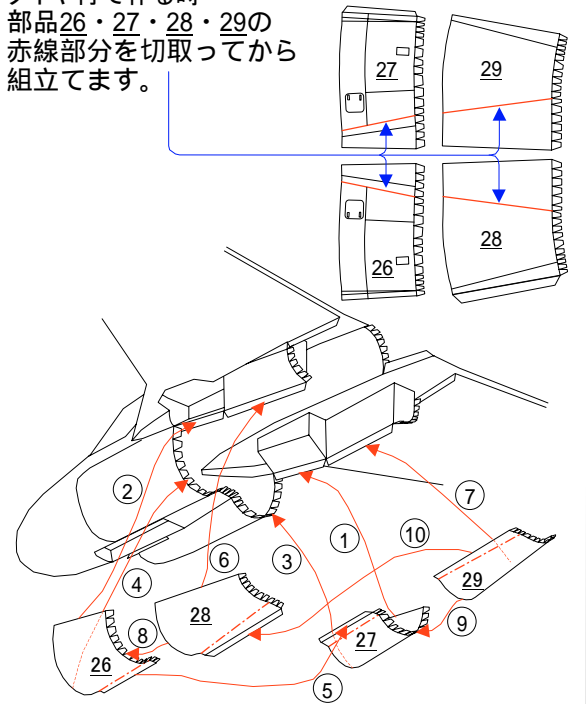
4. タイヤ付で作る時は部品116・129の赤線部分を切取ってから組立てます。主翼の後ろ側は後で接着しますので  
ここでは接着しないようにしてください。 タイヤ無しで作る時は3.で組立たれた部品は不要です、

タイヤ付で作る時は部品116・129  
は赤線部分を切取ります

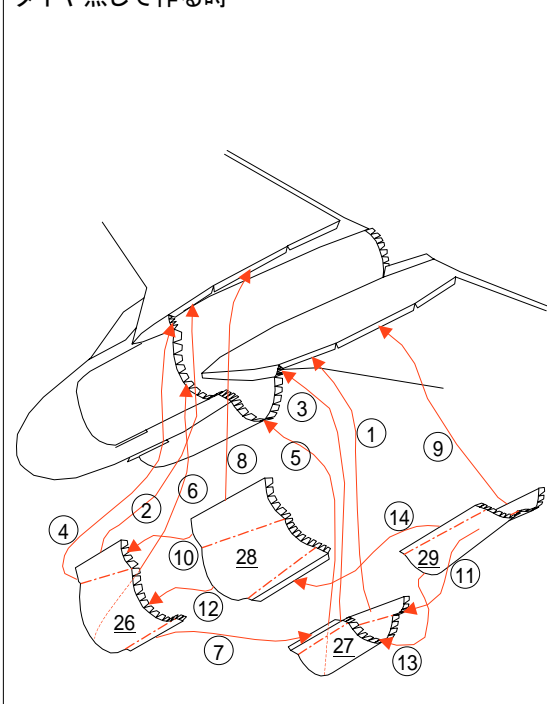


5. タイヤ付き、又はタイヤ無しのどちらかを選択してください

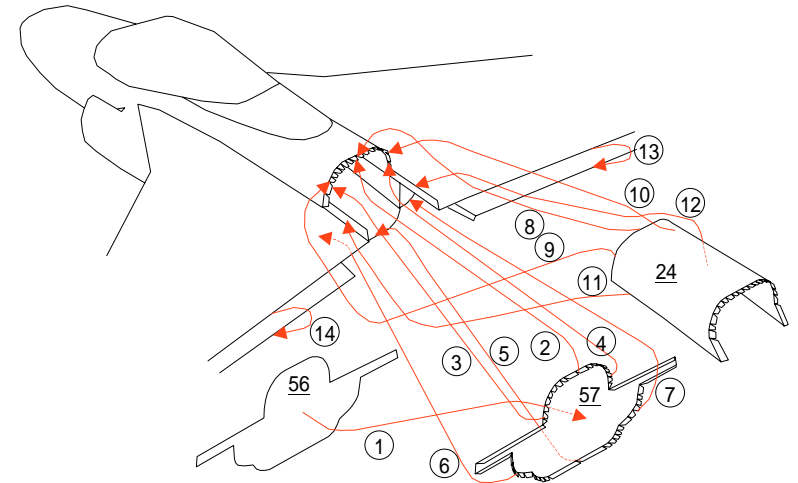
タイヤ付で作る時  
部品26・27・28・29の  
赤線部分を切取ってから  
組立てます。

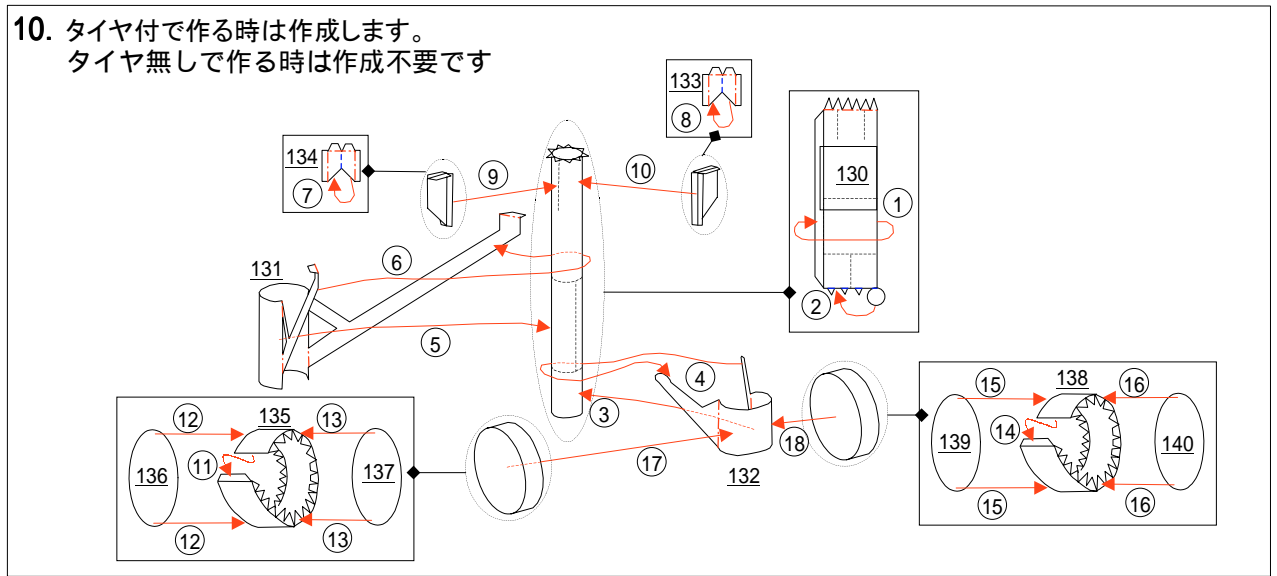
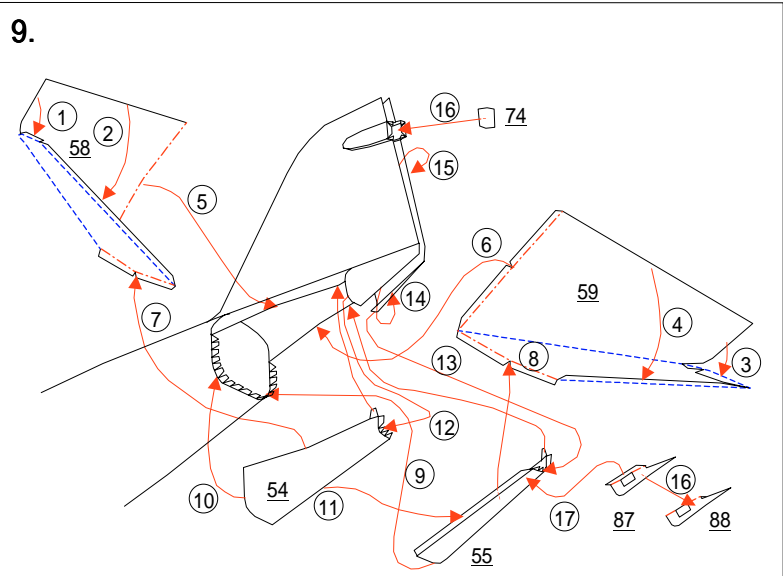
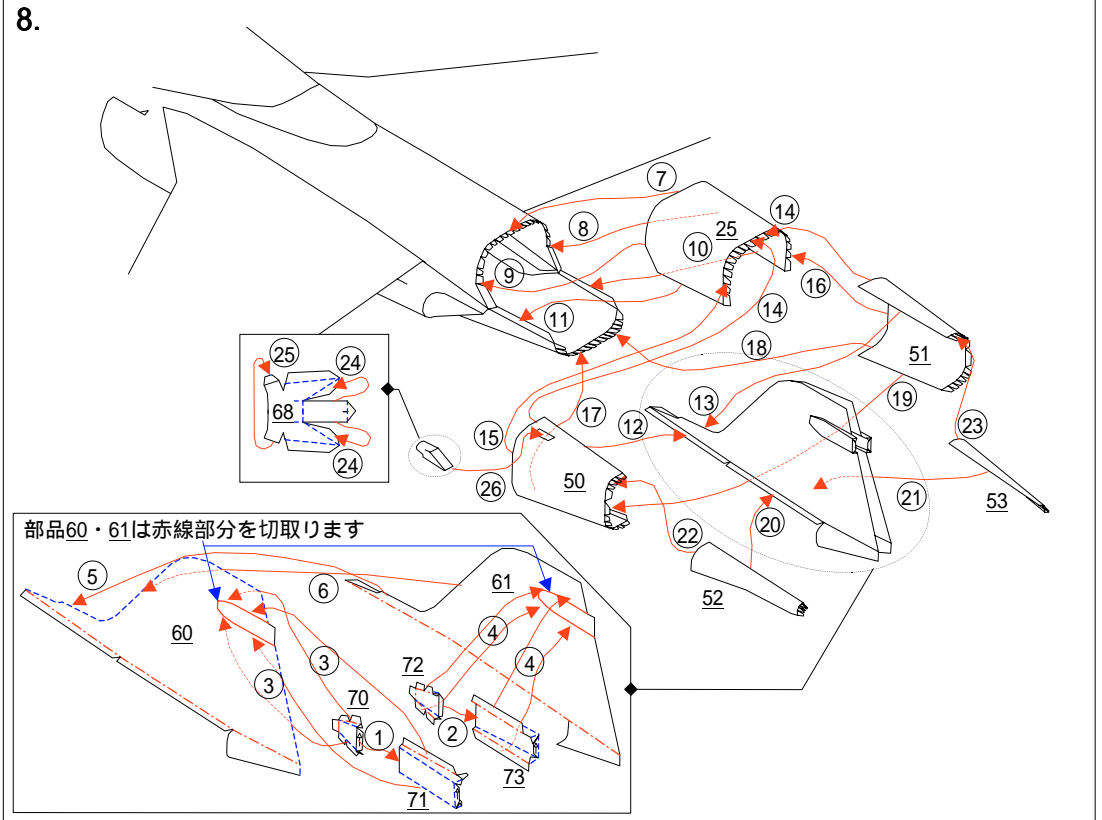
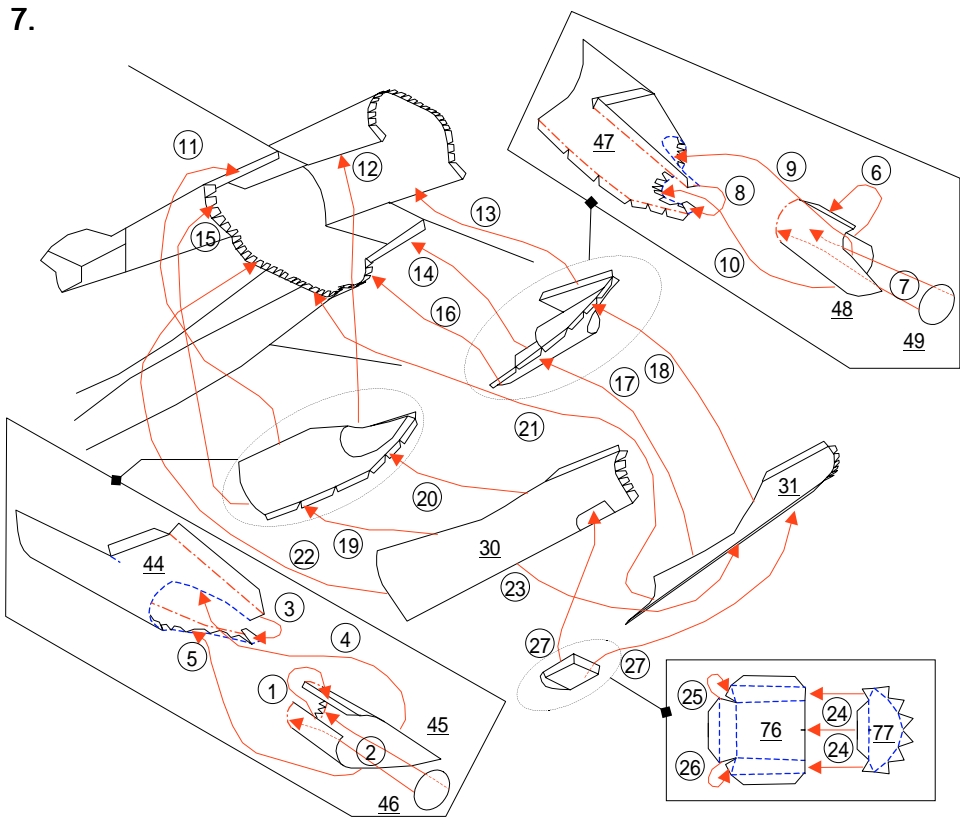


タイヤ無しで作る時

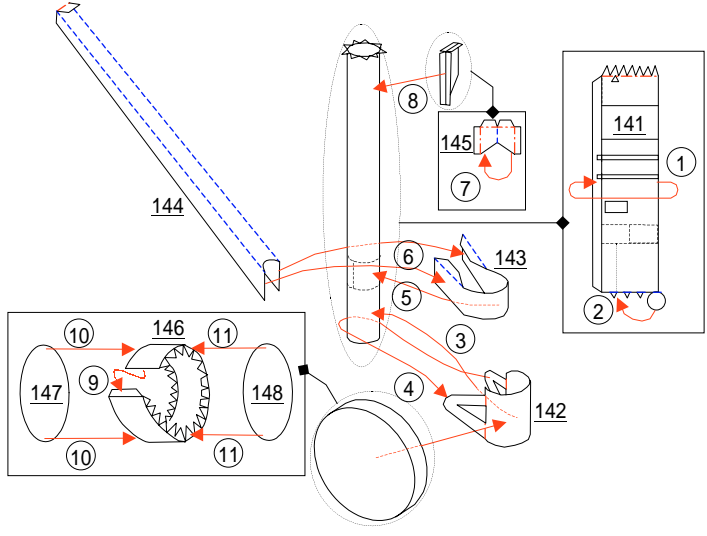


6. 部品56・57・24を接着した後、主翼の後ろ側を接着します。

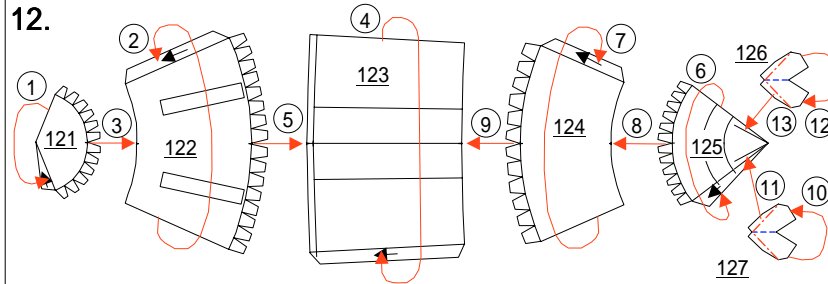




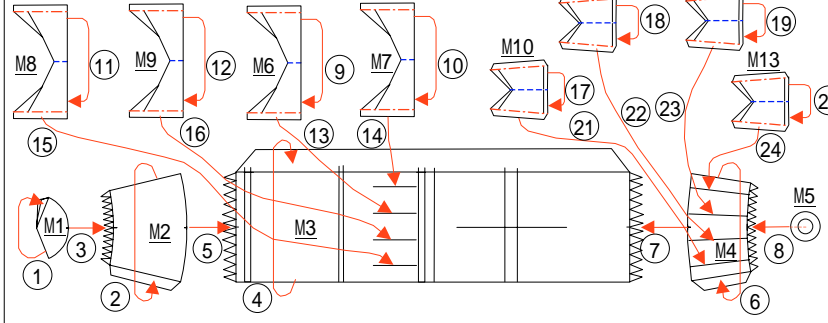
11. 部品141～148を作成後、149～156も同様に作成します  
 タイヤ無しで作る時は作成不要です



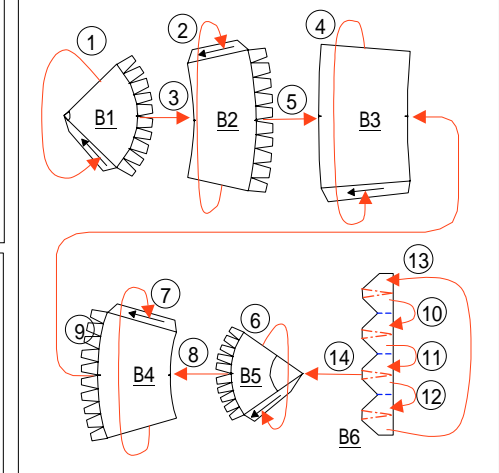
12.



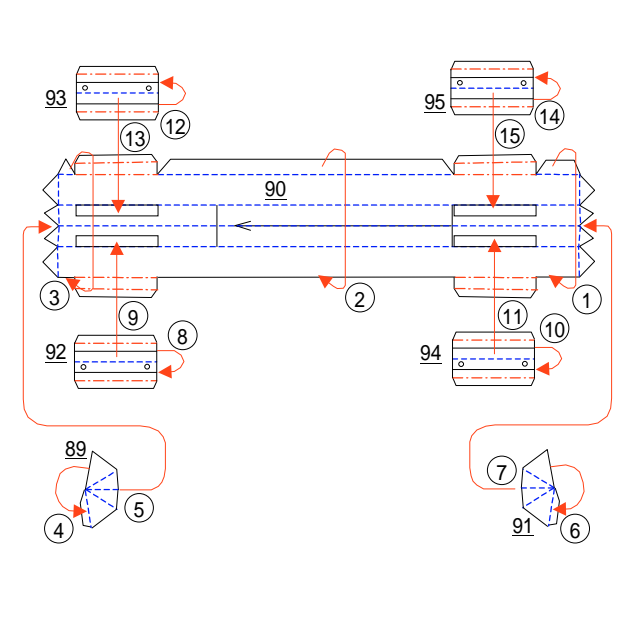
13. AGM-88 HARM M1～M13を2つ作ります



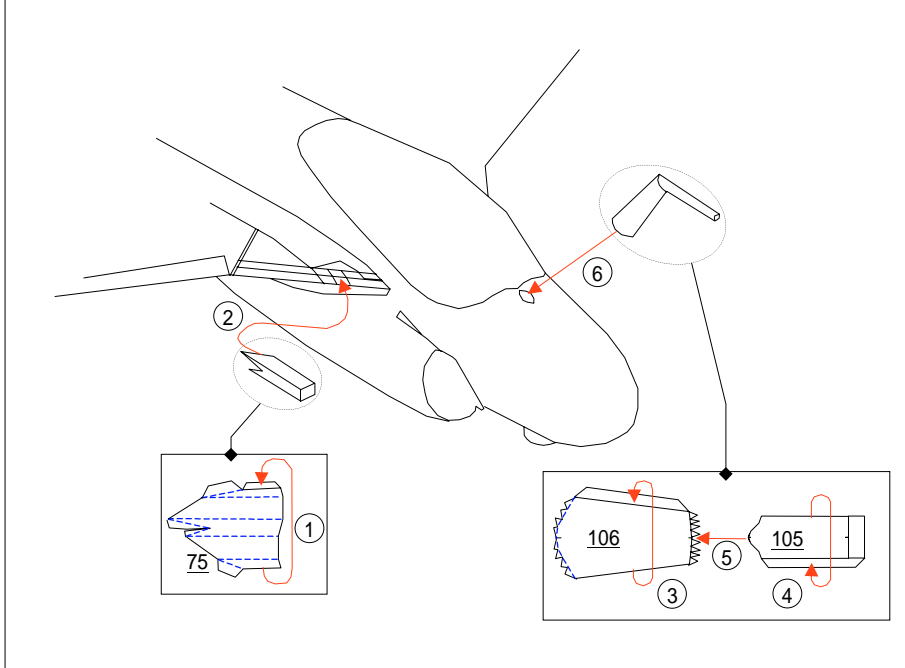
14. Mk82 B1～B6を10個作ります。



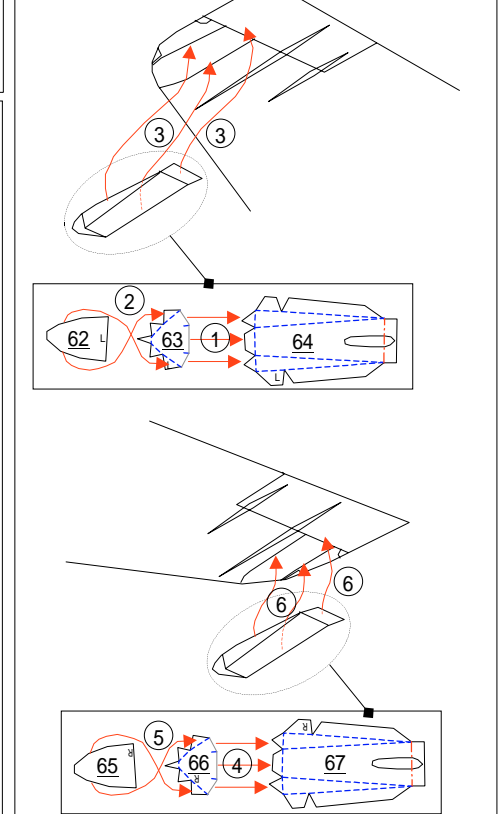
15. 部品89～95を作成後、  
 96～102も同様に作成します



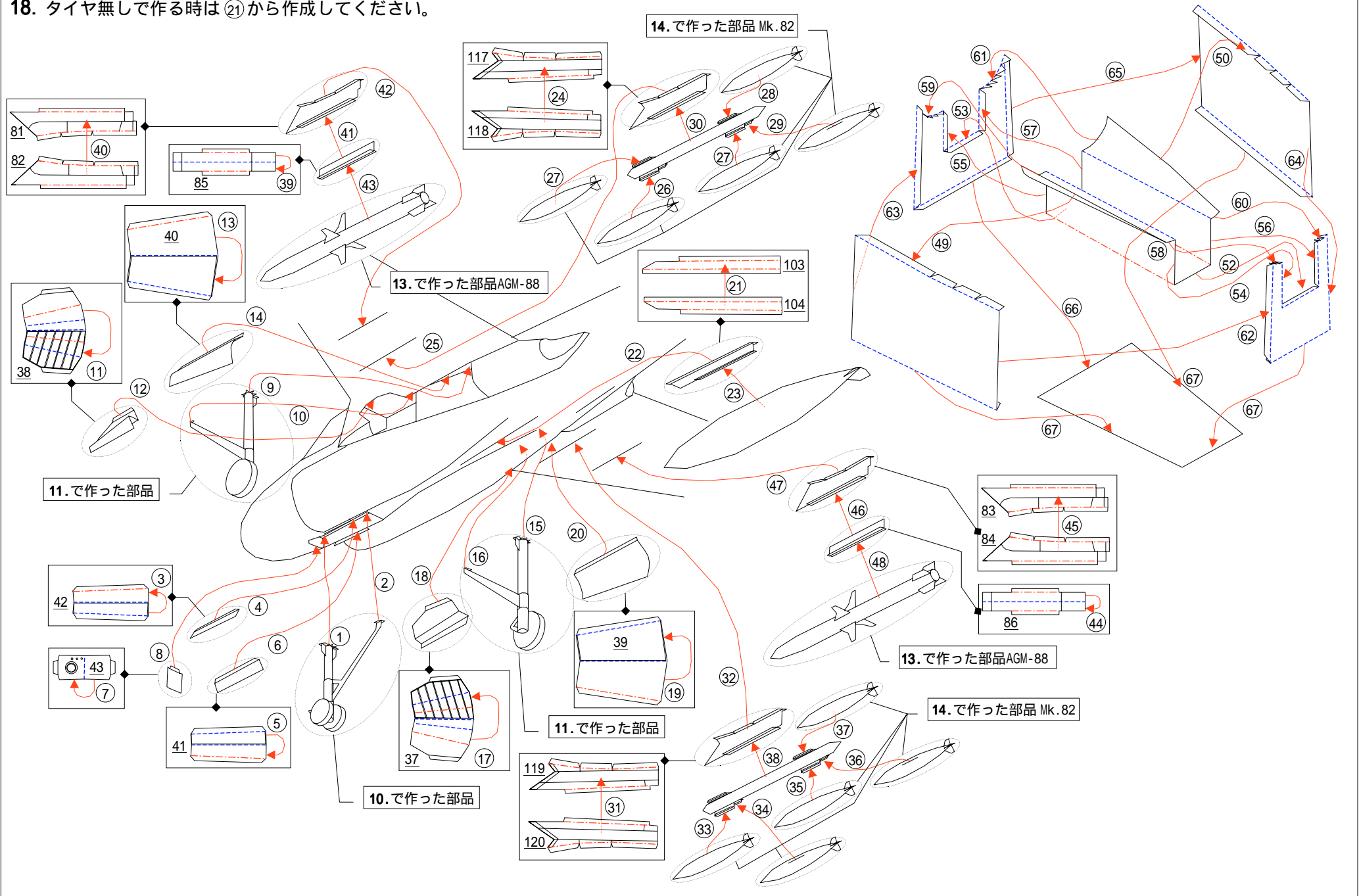
16.

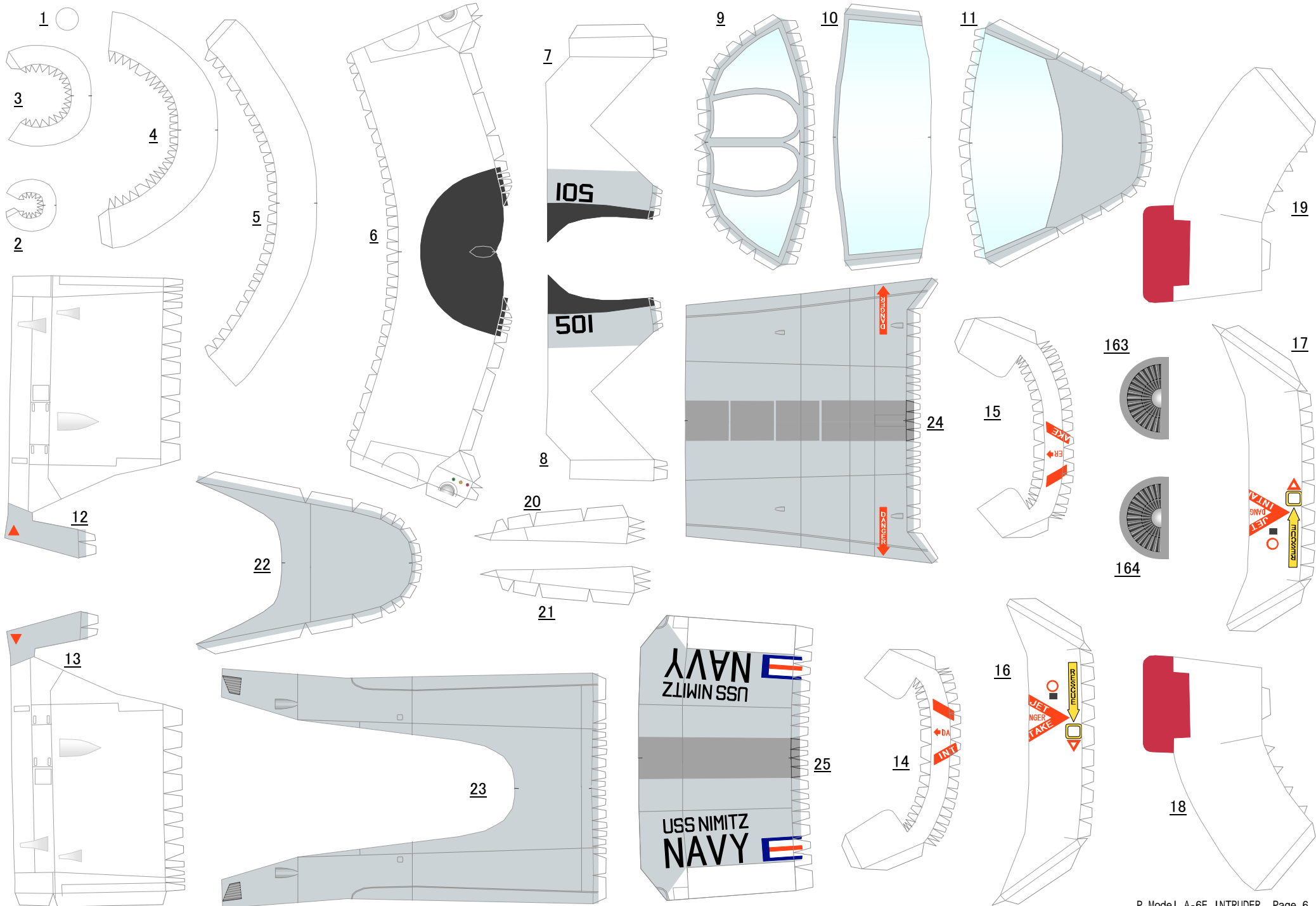


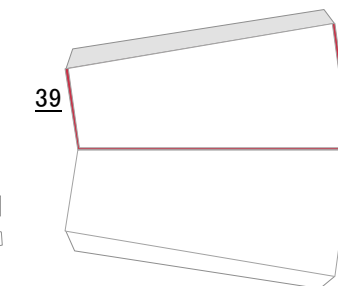
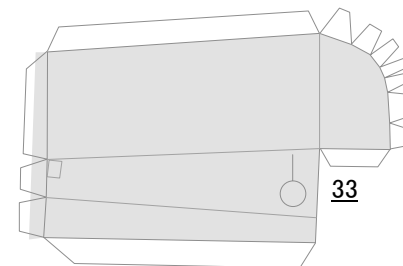
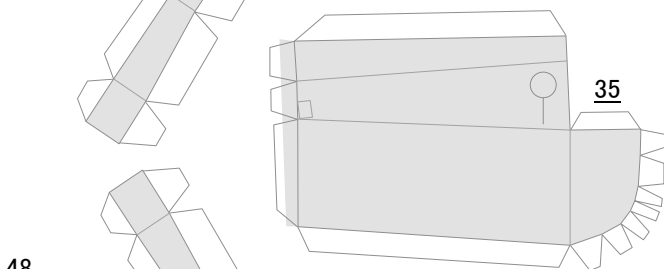
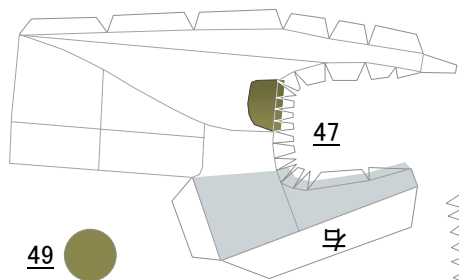
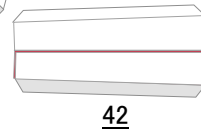
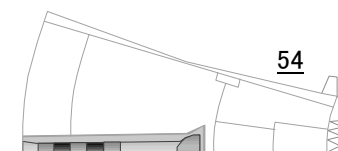
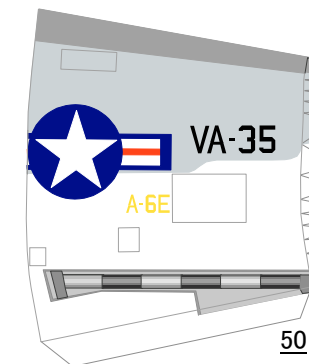
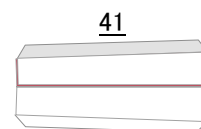
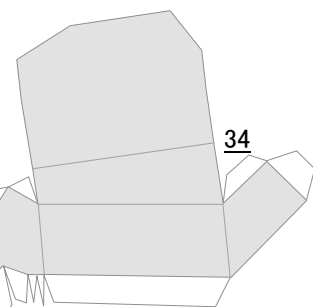
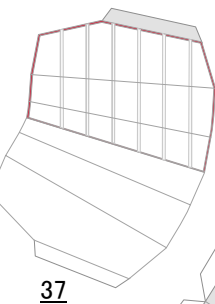
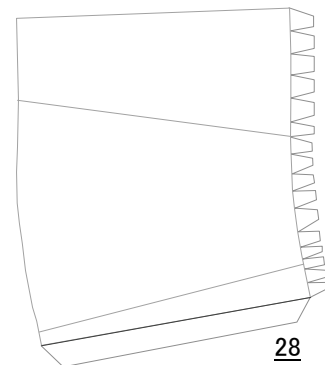
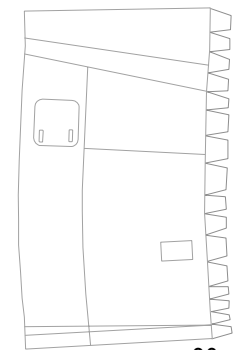
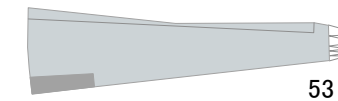
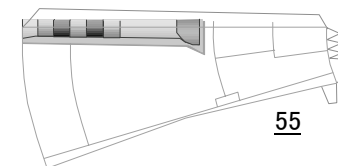
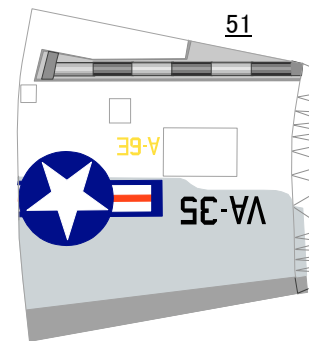
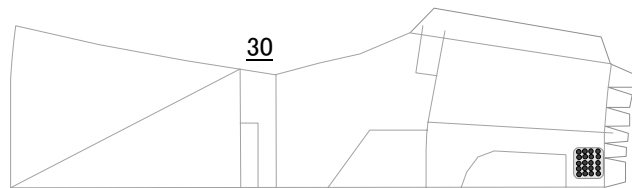
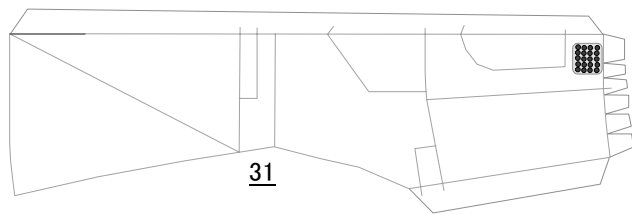
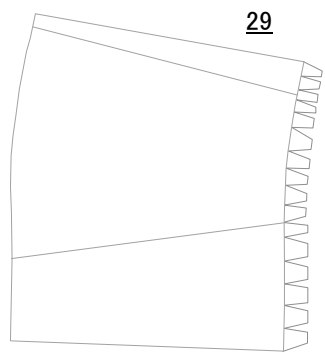
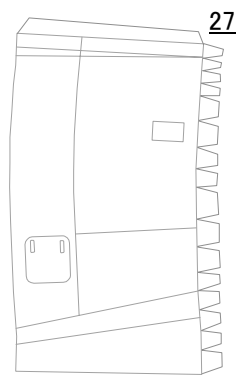
17.



18. タイヤ無しで作る時は ㉑ から作成してください。







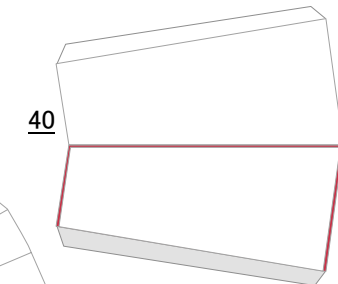
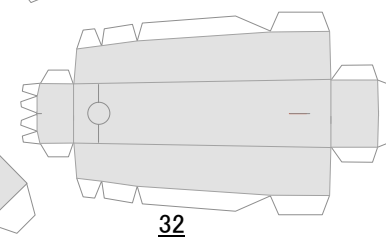
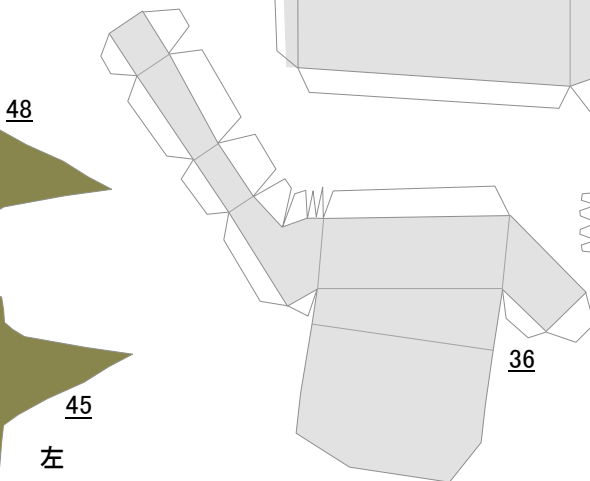
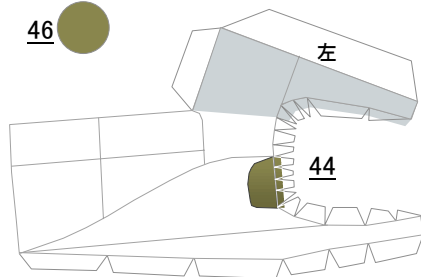
49 ●

右

48

46 ●

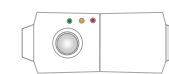
左

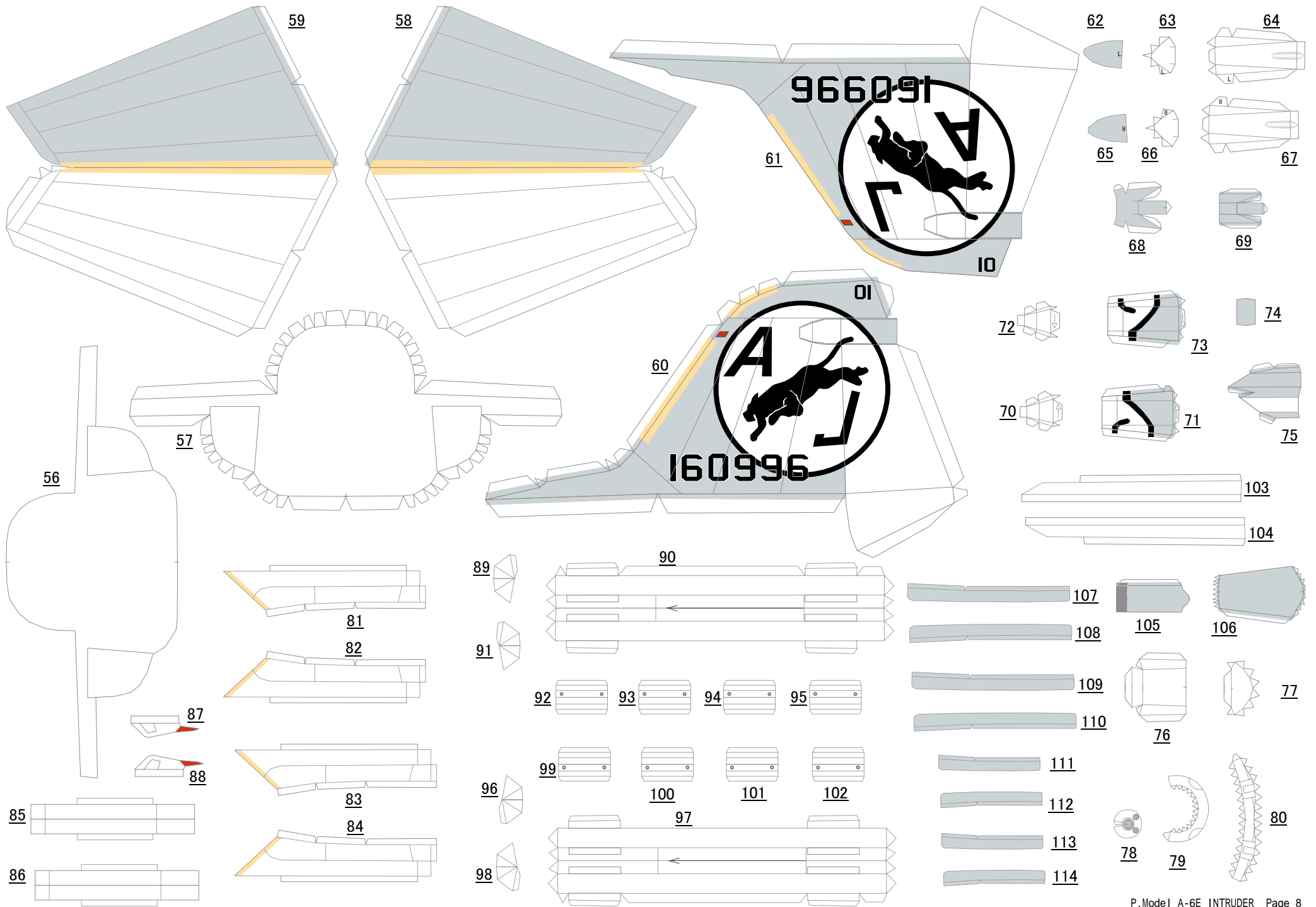


45  
左

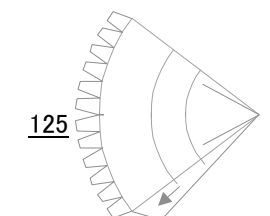
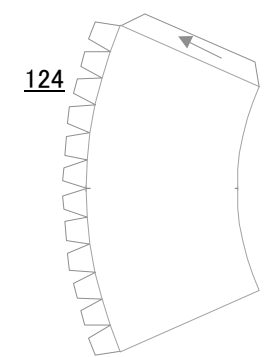
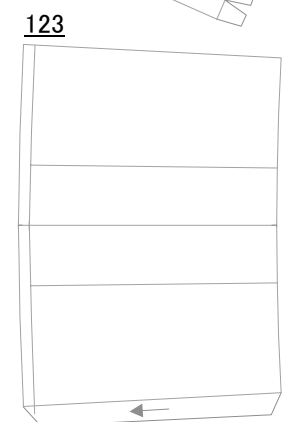
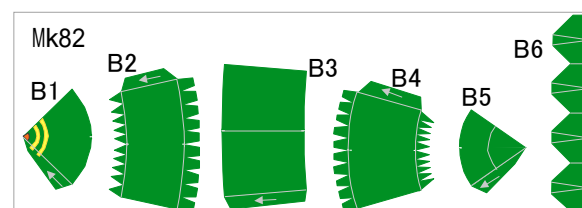
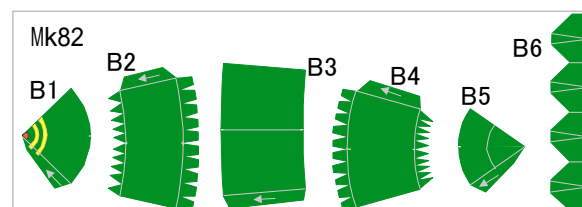
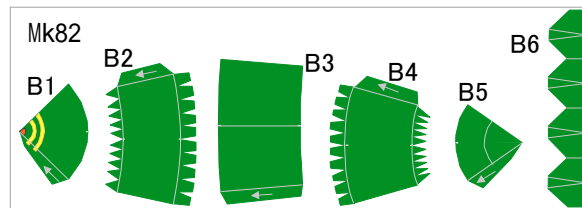
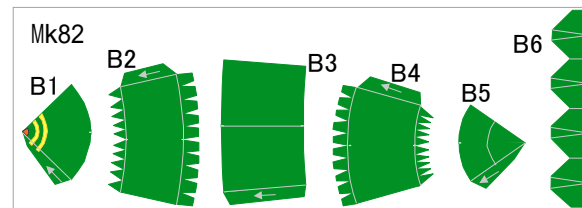
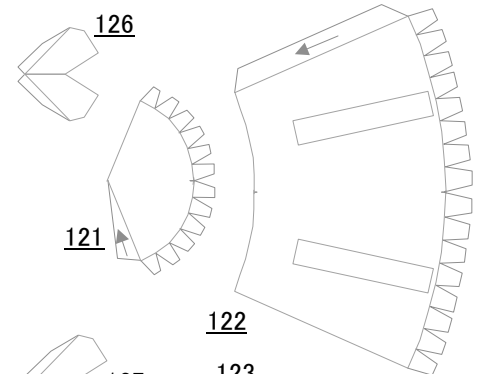
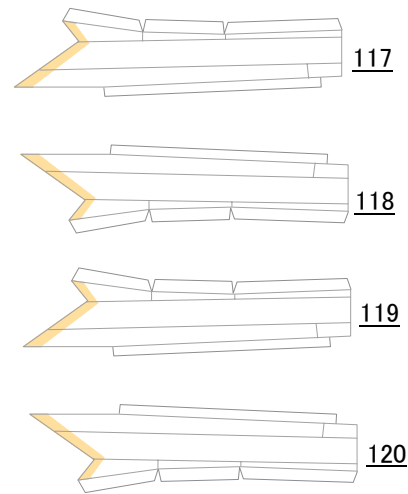
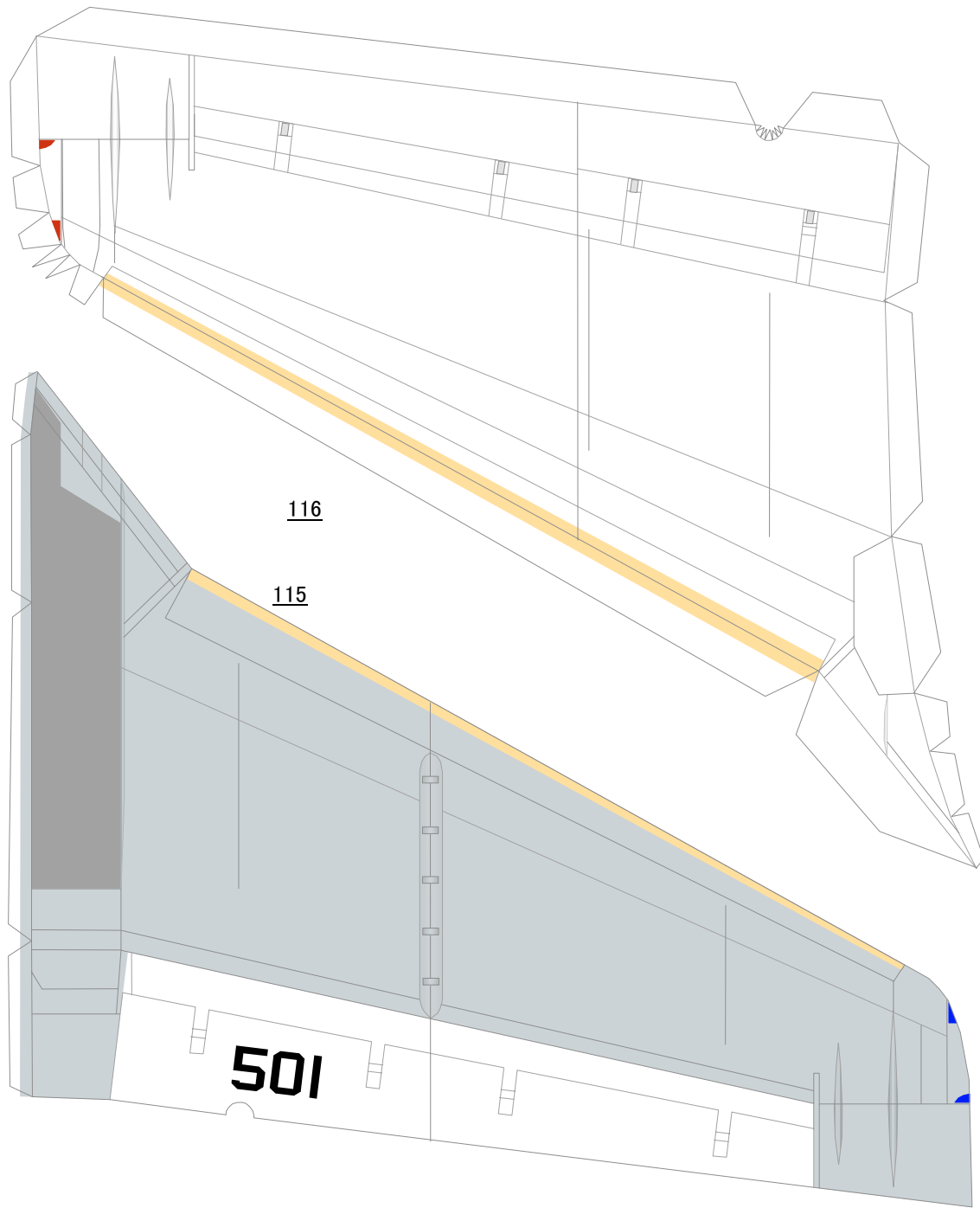
36

38









134

133

