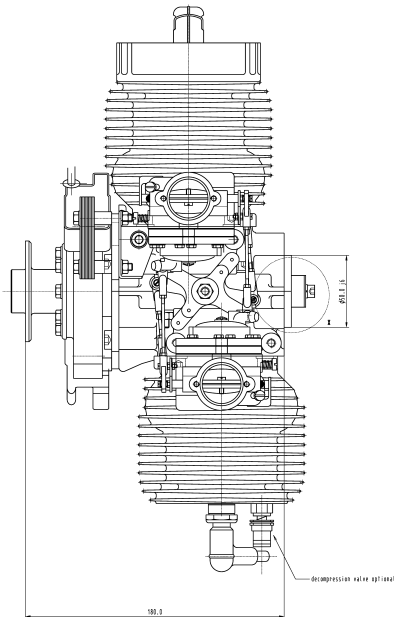
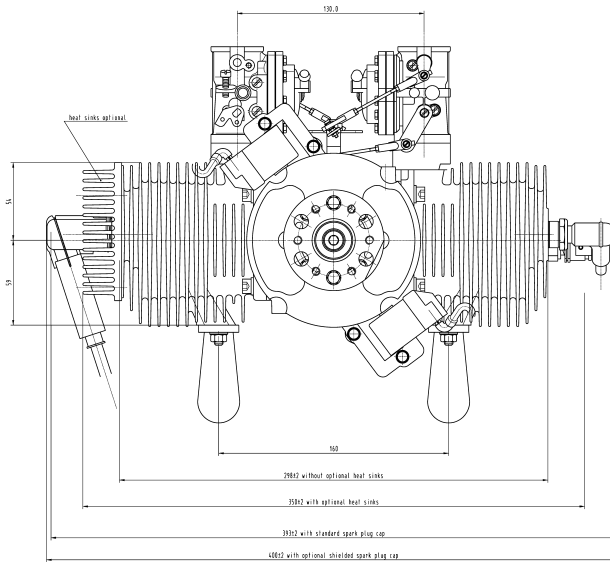
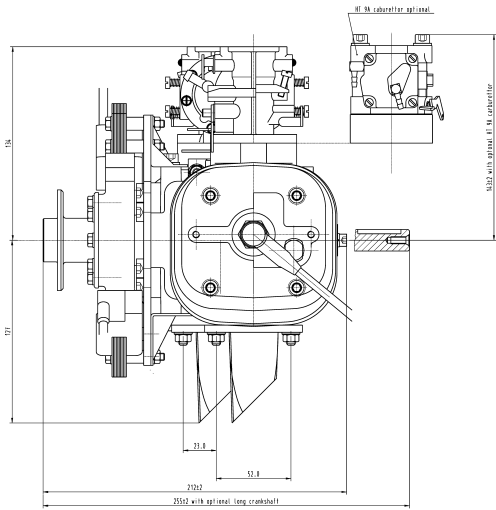


## LIMBACH *L 275 E*

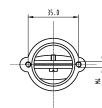
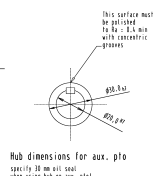
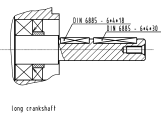
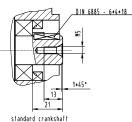
**Two cylinder, horizontally opposed, air cooled, two cycle engine, with solid state magneto or battery ignition, mixture lubrication. Suitable for pusher and tractor installations.**

Performance	15 kW (20 HP) at 7200 rpm	Carburators	2 diaphragm all position carburators, without choke
Bore	66 mm / 2.60 inch	Starter	12V optional
Stroke	40 mm / 1.57 inch	Generator	without
Displacement	274 cm <sup>3</sup> / 16.72 cub. inches	Dry weight approx.	7.2 kg with magneto ignition
Crankcase	Aluminum casting	Fuel	AVGAS 100LL or 90 RON mixed with a suitable oil to the ratio of 1:25 or 1:50 (with synthetic oil)
Crankshaft	Drop forged, one piece utilizing 2 split connecting rods with needle bearings	Optional Equipment:	Cylinders with additional heat sinks (+ 0.6 kg)
Pistons	Cam ground, casted aluminum alloy		Shielded ignition system
Cylinders	Casted aluminum alloy, with nicasil coated barrel		Long and short crankshafts
Ignition system	Solid state magneto ignition		Exhaust stacks
Firing Order	Both cylinders simultaneously		

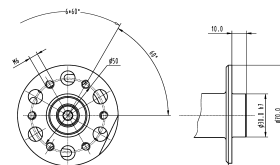
**Limbach Flugmotoren GmbH & Co.KG**  
 Kotthausener Straße 5  
 D-53639 Königswinter-Sassenberg  
 Tel. ++49-2244/9201-0  
 Fax ++49-2244/9201-30  
 E-Mail: [sales@limflug.de](mailto:sales@limflug.de)  
[www.limflug.de](http://www.limflug.de)



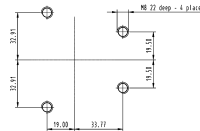
**detail X**



Bolt pattern of carburetor inlet

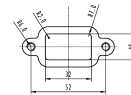


Propeller hub dimensions

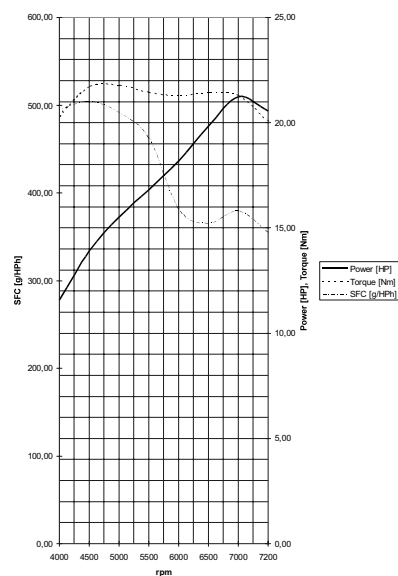


Bolt pattern for engine mount

use high strength 1200 N/mm bolts



Exhaust flange dimensions



**Limbach Flugmotoren GmbH & Co.KG**  
**Kotthausener Straße 5**  
**D-53639 Königswinter-Sassenberg**  
**Tel. ++49-2244/9201-0**  
**Fax ++49-2244/9201-30**  
**E-Mail: sales@limflug.de**  
**www.limflug.de**