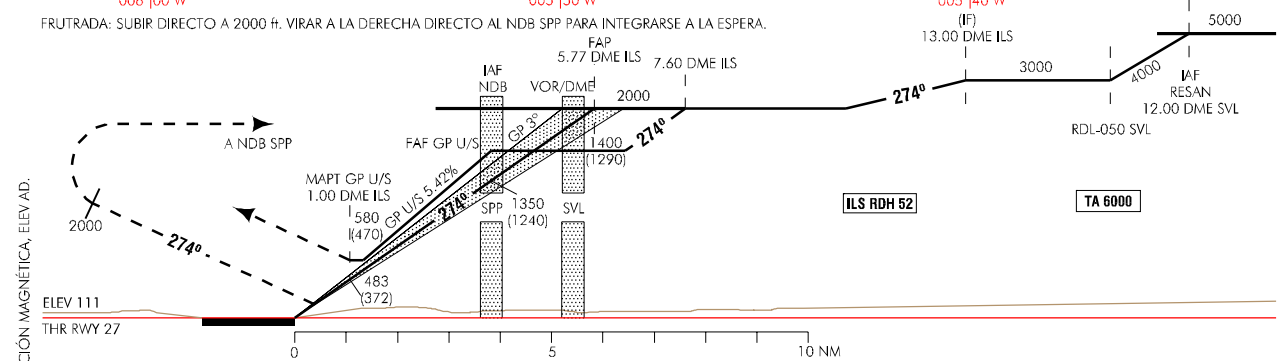
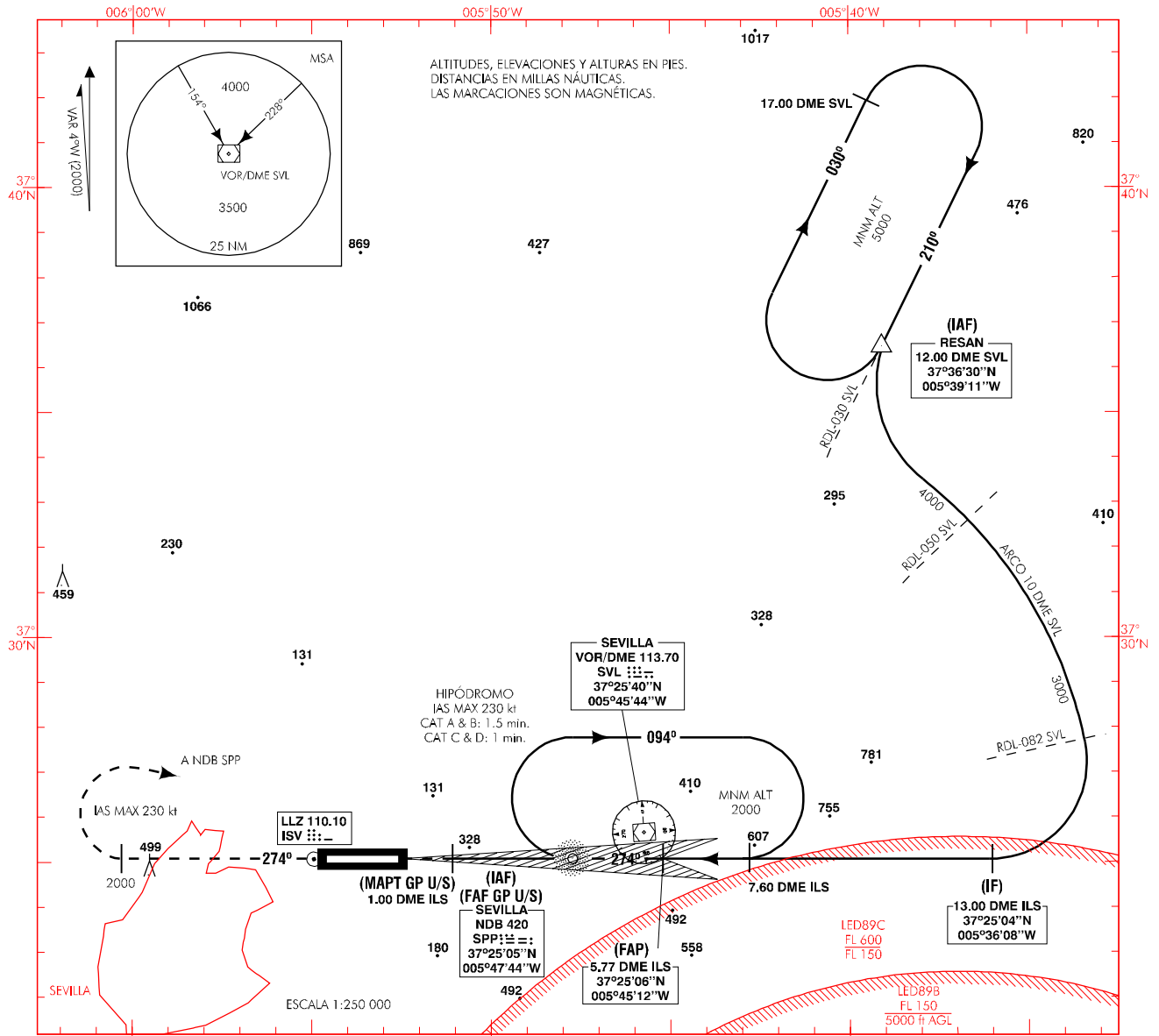


CARTA DE APROXIMACIÓN
POR INSTRUMENTOS-OACI

ELEV AD
111

APP 128.50
TWR 118.10
GMC 121.70

SEVILLA
ILS/DME-VOR/DME
RWY 27



CAMBIOS: DECLINACIÓN MAGNÉTICA, ELEV AD.

HGT REF ELEV THR RWY 27

OCA/H	A	B	C	D
2.5%	298 (187)	310 (199)	318 (207)	329 (218)
STA	580 (470)			
GP U/S				
En circuito (H) sobre 111	630 (520)	630 (520)	990 (880)	990 (880)

GS	kt	80	100	120	140	160	180					
FAP-THR: 5.77 NM	mins	4:20	3:28	2:53	2:28	2:10	1:55					
FAF-MAPT: 2.76 NM	mins	2:04	1:39	1:23	1:11	1:02	0:55					
ROD 5.24%	ft/min	425	531	637	743	849	955					
ROD GP U/S: 5.42 %	ft/min	439	549	659	768	878	988					
ALT/HGT DME (ILS) FNA GP U/S												
13 DME	12 DME	11 DME	10 DME	9 DME	8 DME	7 DME	6 DME	5 DME	4 DME	3 DME	2 DME	1 DME
										1160 (1050)	830 (720)	

13-JUN-02 (AMDT 87/02)

AIP-ESPAÑA

AD 2-LEZL IAC/2