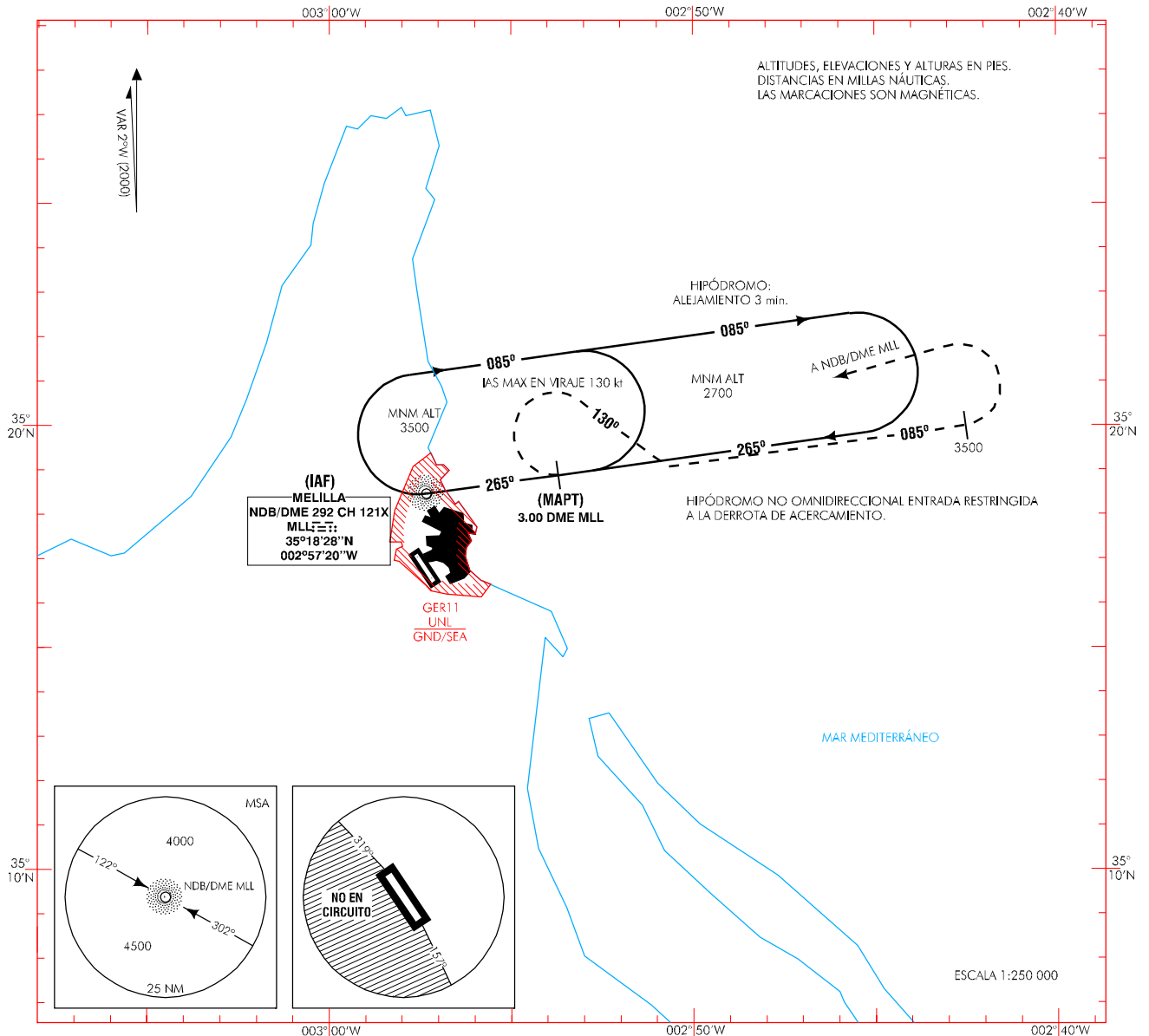


CARTA DE APROXIMACIÓN  
POR INSTRUMENTOS-OACI

ELEV AD  
156

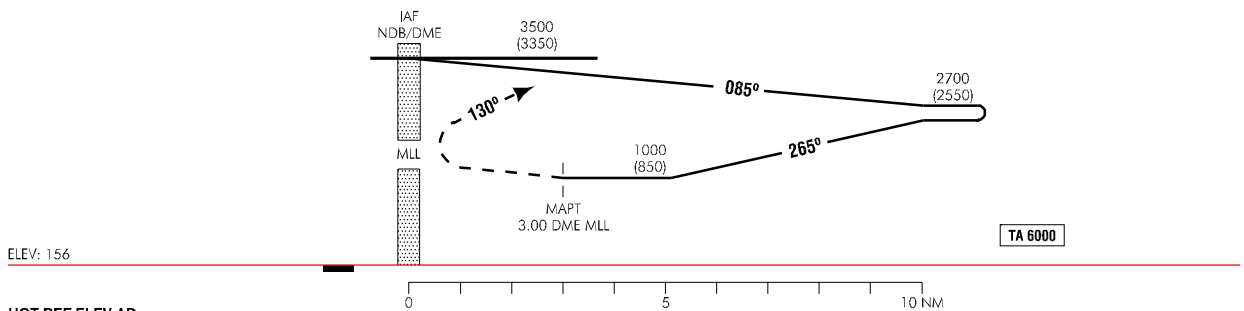
TWR 118.50  
GMC 121.70

MELILLA  
NDB  
CAT A & B



FRUSTRADA: VIRAR TAN PRONTO SEA POSIBLE A LA DERECHA A RUMBO 130°, PARA SEGUIR MARCACIÓN 085° NDB/DME MLL, SUBIENDO A 3500 Y REGRESAR AL NDB/DME MLL.

CAMBIOS: DECLINACIÓN MAGNÉTICA, ELEV AD.



HGT REF ELEV AD

| OCA/H                 | A                      | B | C | D |
|-----------------------|------------------------|---|---|---|
| STA                   | RESTRINGIDA A CIRCUITO |   |   |   |
| En circuito (H) sobre | 1000 (850)             |   |   |   |

| GS                  | kt     | 80     | 100    | 120   | 140   | 160   | 180   |
|---------------------|--------|--------|--------|-------|-------|-------|-------|
| FAP-THR:            | min:s  |        |        |       |       |       |       |
| FAF-MAPT:           | min:s  |        |        |       |       |       |       |
| ROD:                | ft/min |        |        |       |       |       |       |
| ALT/HGT DME ( ) FNA |        |        |        |       |       |       |       |
| 13 DME              | 12 DME | 11 DME | 10 DME | 9 DME | 8 DME | 7 DME | 6 DME |
| 5 DME               | 4 DME  | 3 DME  | 2 DME  | 1 DME |       |       |       |

13-JUN-02 (AMDT 87/02)

AIS-ESPAÑA

AD 2-GEML IAC/1