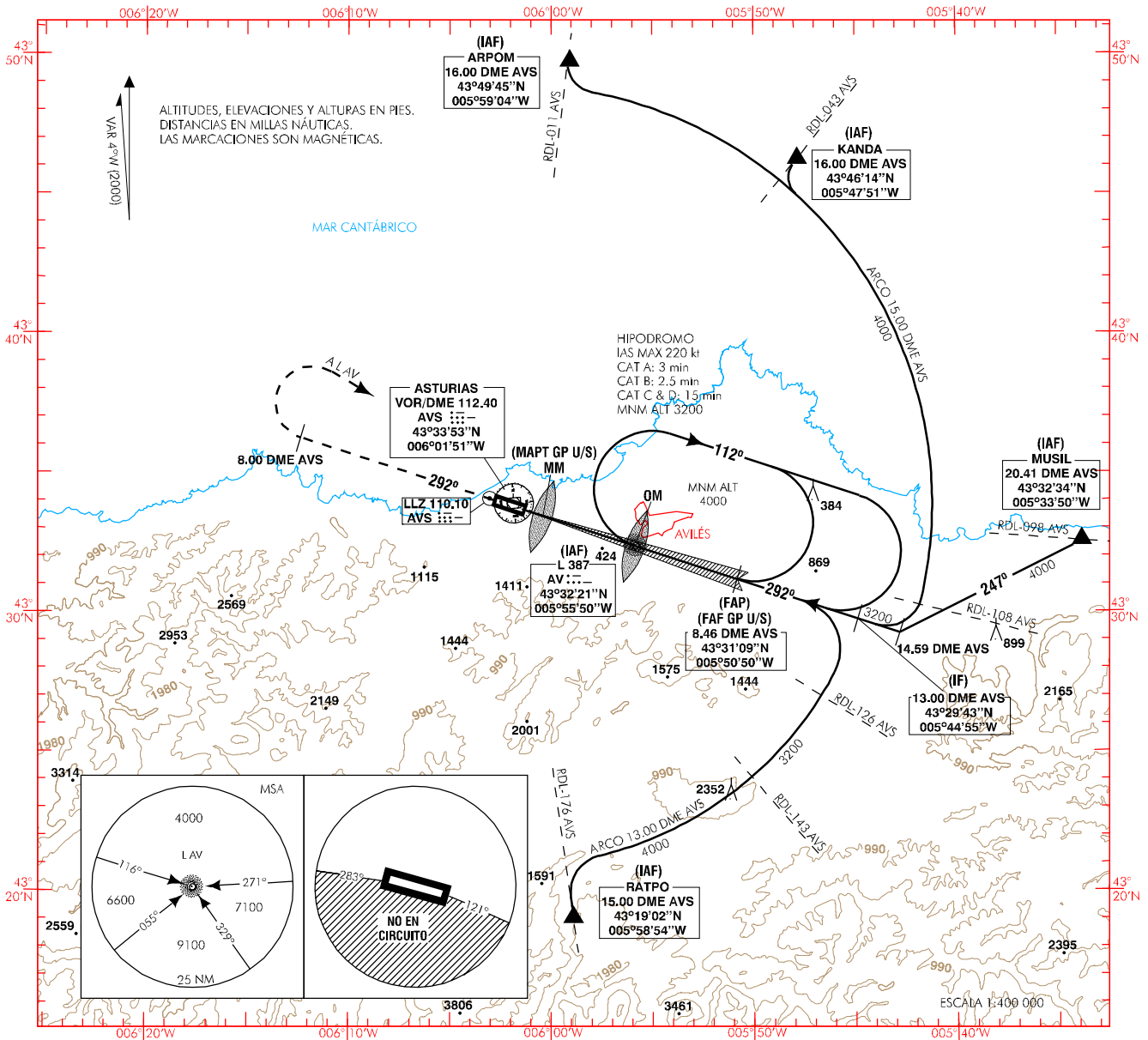


CARTA DE APROXIMACIÓN  
POR INSTRUMENTOS-OACI

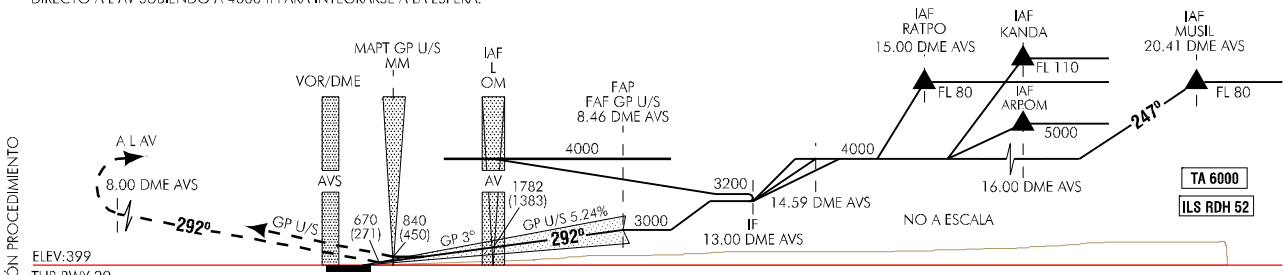
ELEV AD  
416

APP 118.15  
TWR 118.15  
GMC 121.70

ASTURIAS  
VOR/DME-L-ILS  
RWY 29



FRUSTRADA: SUBIR EN RUMBO DE PISTA HASTA 8.00 DME AVS. VIRAR A LA DERECHA DIRECTO A L AV SUBIENDO A 4000 ft PARA INTEGRARSE A LA ESPERA.



HGT REF ELEV THR RWY 29

| OCA/H                        |        | A            | B            | C             | D             |
|------------------------------|--------|--------------|--------------|---------------|---------------|
| STA                          | CAT I  | 584<br>(185) | 594<br>(195) | 604<br>(205)  | 614<br>(215)  |
|                              | GP U/S | 840<br>(450) |              |               |               |
| En circuito<br>(H) sobre 416 |        | 870<br>(460) | 920<br>(510) | 1040<br>(630) | 1290<br>(880) |

| GS                           | kt     | 80     | 100    | 120   | 140            | 160            | 180            |                |                |               |              |       |
|------------------------------|--------|--------|--------|-------|----------------|----------------|----------------|----------------|----------------|---------------|--------------|-------|
| FAP-THR: 8.01 NM             | min:s  | 6:00   | 4:48   | 4:00  | 3:26           | 3:00           | 2:40           |                |                |               |              |       |
| FAF-MAPT: 7.32 NM            | min:s  | 5:29   | 4:24   | 3:40  | 3:08           | 2:45           | 2:26           |                |                |               |              |       |
| ROD: 5.24 %                  | ft/min | 425    | 531    | 637   | 743            | 849            | 955            |                |                |               |              |       |
| ALT/HGT DME (AVS) FNA GP U/S |        |        |        |       |                |                |                |                |                |               |              |       |
| 13 DME                       | 12 DME | 11 DME | 10 DME | 9 DME | 8 DME          | 7 DME          | 6 DME          | 5 DME          | 4 DME          | 3 DME         | 2 DME        | 1 DME |
|                              |        |        |        |       | 2860<br>(2470) | 2540<br>(2150) | 2220<br>(1830) | 1900<br>(1510) | 1580<br>(1190) | 1270<br>(880) | 950<br>(560) |       |

CAMBIOS/DENOMINACIÓN PROCEDIMIENTO

WEF 03-OCT-02 (AIRAC AMDT 9/02)

AIP-ESPAÑA

AD 2-LEAS IAC/3