

QUAKER 'TOO'

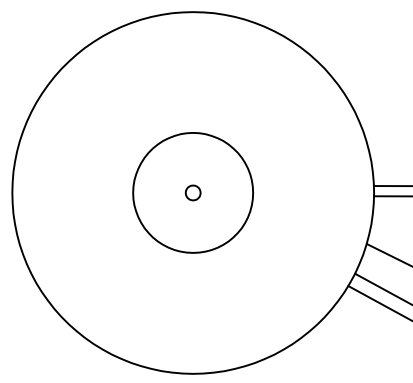
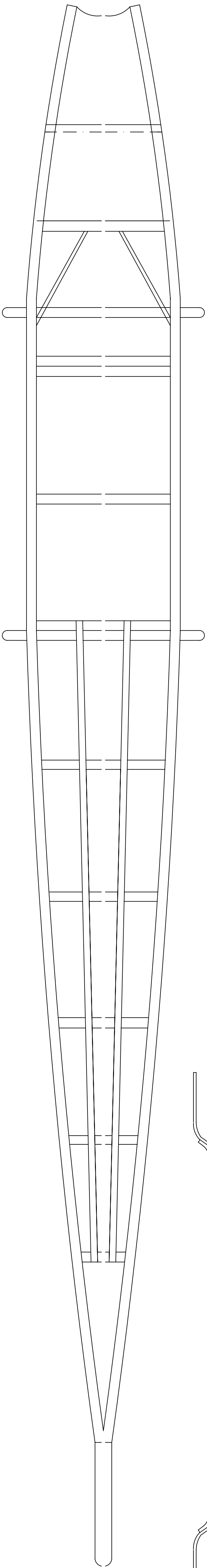
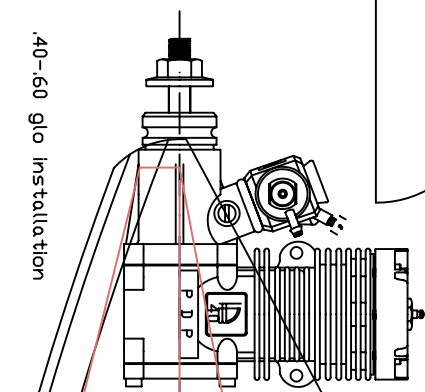
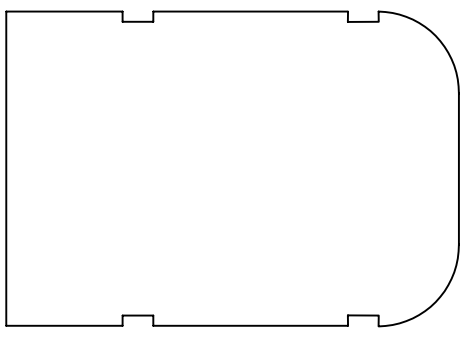
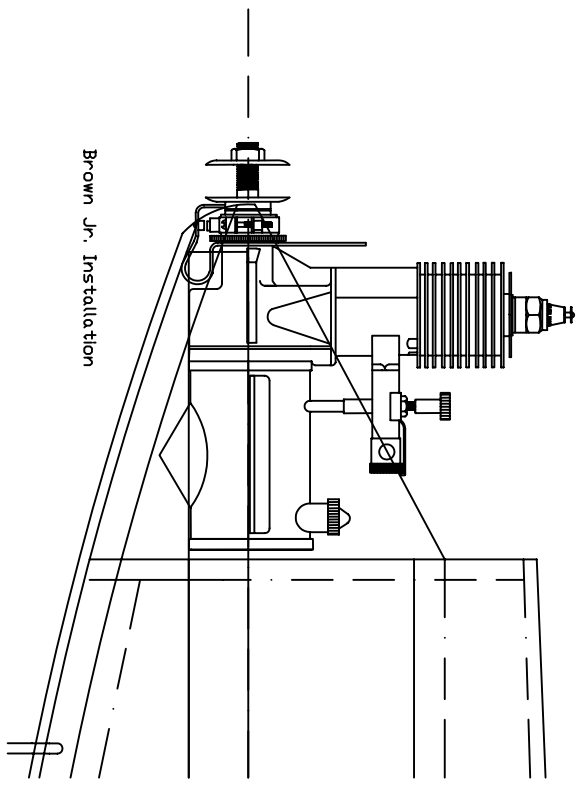
An adaptation of the 1937 QUAKER

modified, CUB drawn, and set up for 3 Chan. R/C assist by:

Richard C. Bradford

Span: 84"

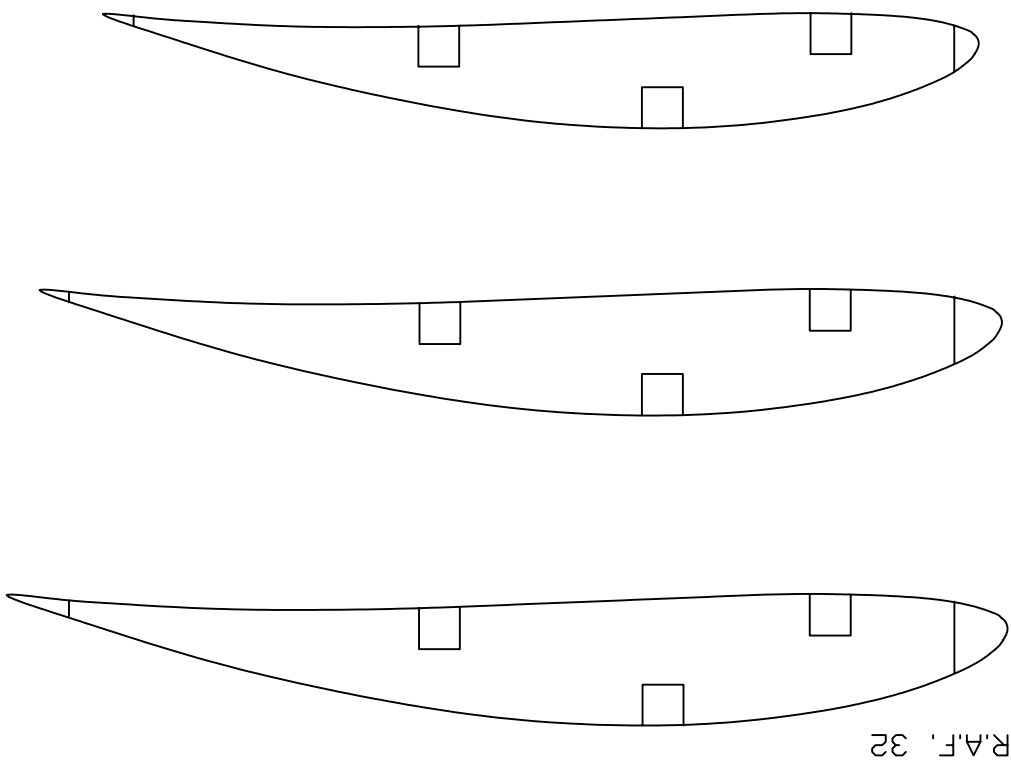
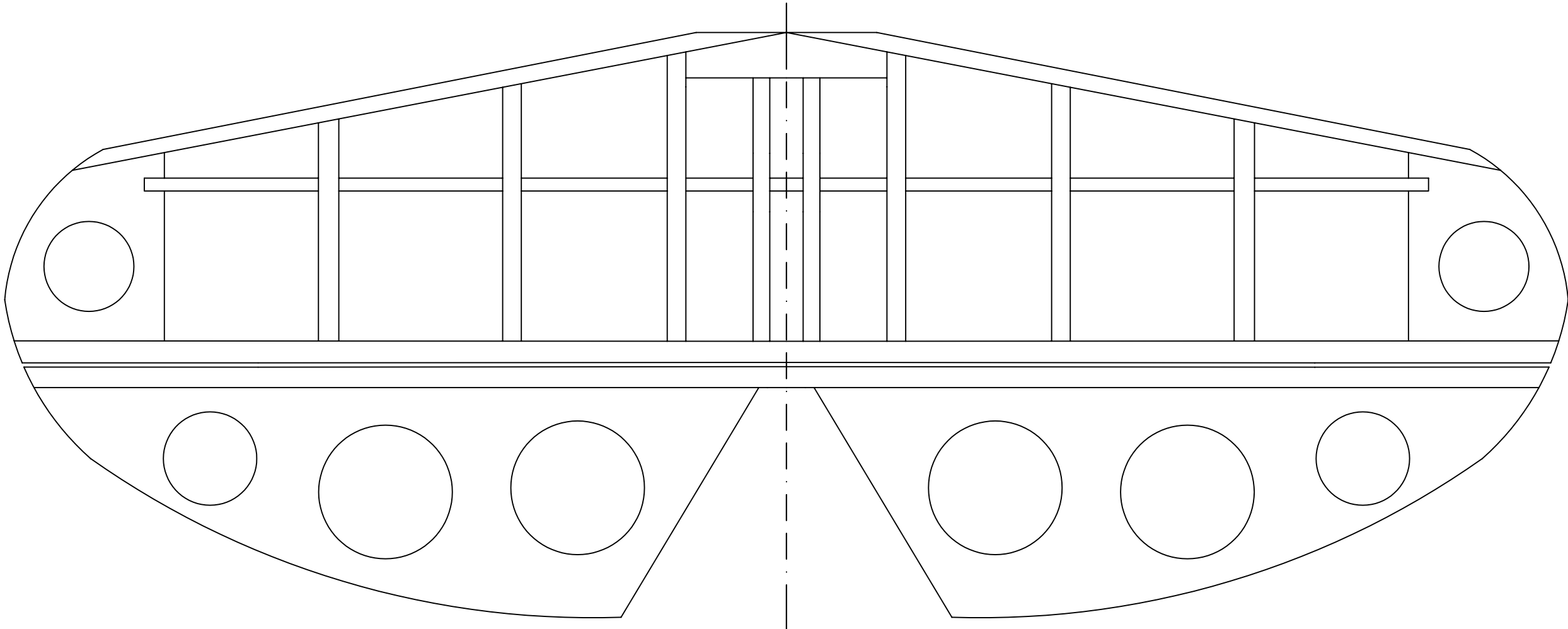
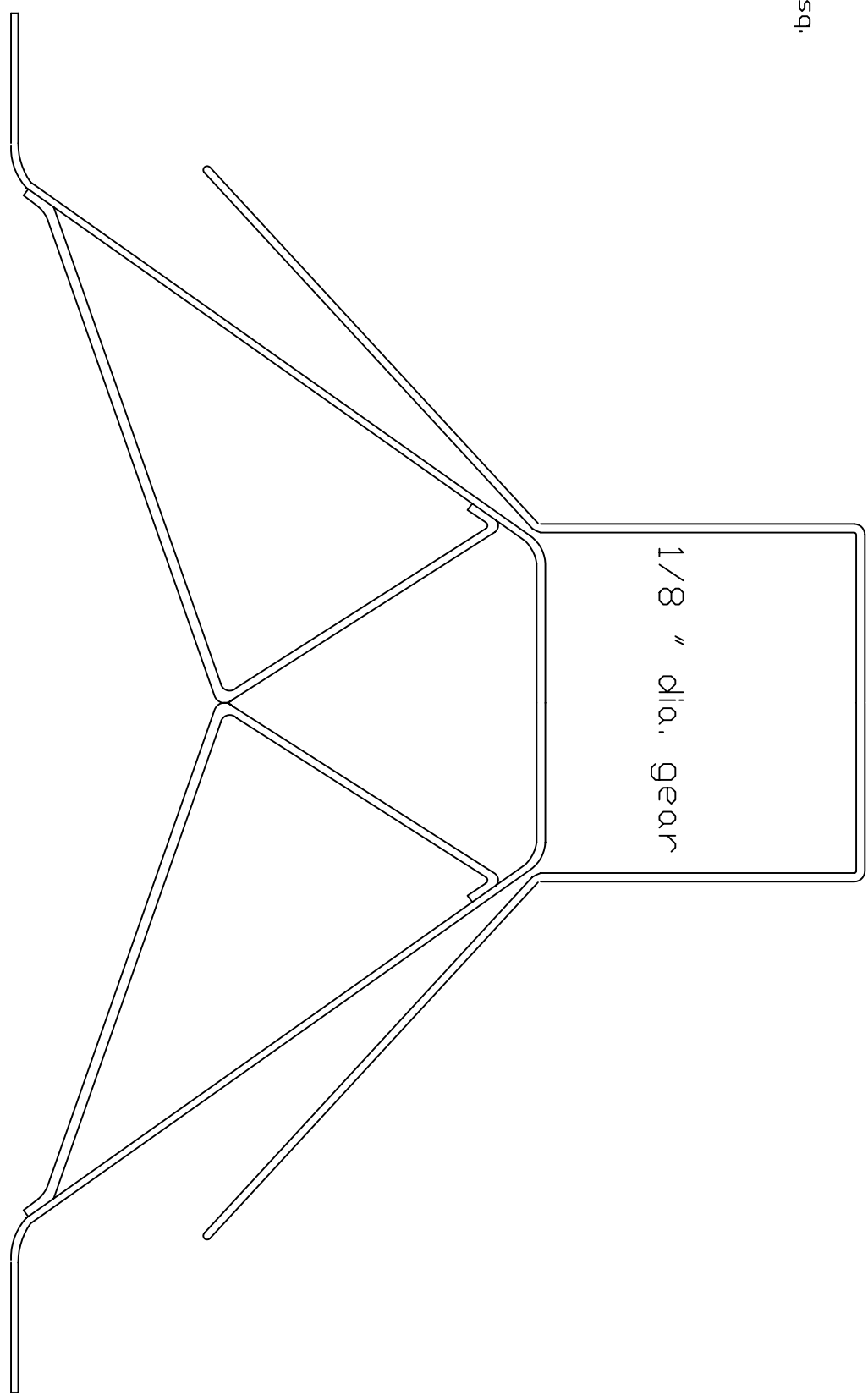
suggested power: 40 to 60



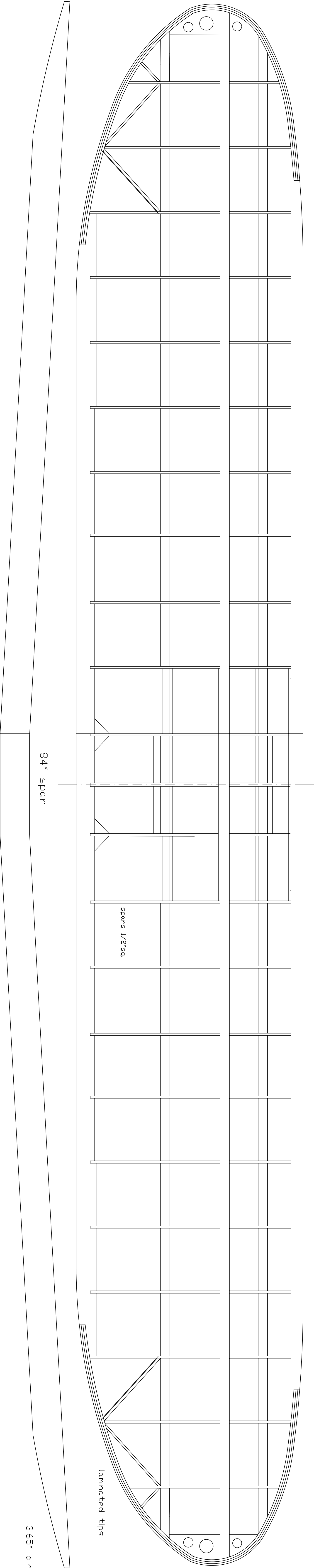
green block

1/8" sheet bottom

fus. const. 3/8"sq



R.A.F. 32



spars 1/2"sq

laminated tips

365" allmetal both tips